

A full-page background image of two divers underwater. The diver in the foreground is a woman with dark hair, wearing a black BCD with 'DELTA' and 'IST PROLINE' logos, a black mask with a pink frame, and a pink snorkel. She is looking towards the camera. The diver in the background is a man wearing a black mask and BCD, looking slightly away from the camera. They are both equipped with scuba tanks and regulators. The water is clear blue, and a coral reef is visible at the bottom.

2021 • 2022

**YOUR
DIVING
ADVENTURE
AWAITS**



HELP SAVE THE OCEAN



**Buy Our Product
Make A Difference**

Reduce ↓ 
Plastic Package

TABLE OF CONTENT

01 -- HARD GEAR

BCD	pg. 02 - 05
Regulators	pg. 06 - 09
Gauge	pg. 10
Tank Equalizer	pg. 11
Checker	pg. 12
Hose	pg. 12 - 13
BCD Accessories	pg. 14
Regulator Accessories	pg. 14
Gauge Accessories	pg. 15
Hard Gear tools	pg. 15 - 16
Tank Accessories	pg. 17
Hose Accessories	pg. 17
Connector & Adaptor	pg. 18

02 -- SOFT GEAR

Mask	pg. 19 - 29
ProEar Mask	pg. 30 - 31
Snorkel	pg. 32 - 35
Fin	pg. 36 - 40
Combo Set	pg. 41 - 43
Mask Accessories	pg. 44 - 45
ProEar Mask Accessories	pg. 45
Snorkel Accessories	pg. 46
Fin Accessories	pg. 46 - 47

03 -- NEOPRENE

Puriguard	pg. 48 - 55
iCool	pg. 53 - 54
Neoprene Gear	pg. 55 - 56
Glove	pg. 56 - 57
Socks	pg. 58
Boot	pg. 59 - 61
Neoprene Accessories	pg. 62
Coat	pg. 63
Logo Wear	pg. 64

04 -- WATERSPORTS GEAR

Life Vest	pg. 65
Swimming Gear	pg. 66

05 -- YOUTH GEAR

Mask	pg. 67
Snorkel	pg. 68
Fin	pg. 68
Neoprene Gear	pg. 70
Combo Set	pg. 71 - 72

06 -- FREEDIVING GEAR

Mask	pg. 73 - 75
Snorkel	pg. 76
Fin	pg. 77 - 78
Neoprene Gear	pg. 79 - 81
Hat	pg. 82
Freediving Buoy	pg. 83
Pole Spears	pg. 84
Accessories	pg. 85

07 -- RENTAL GEAR

BCD	pg. 86
Regulators	pg. 87
Mask	pg. 87 - 88
Snorkel	pg. 88
Fin	pg. 88
Neoprene Gear	pg. 89
Boot	pg. 89

08 -- HUKA

Huka	pg. 90 - 91
------	-------------

09 -- TECHNICAL DIVING GEAR

Side Mount BCD	pg. 92 - 94
Tech Diving Gear	pg. 95 - 107
Tank Valves	pg. 108 - 109
Commercial Diving	pg. 110 - 111

10 -- ACCESSORIES

Torches	pg. 112 - 113
Bag & Dry Box	pg. 114 - 117
Knives	pg. 118 - 119
Sunscreen	pg. 120
Balloon & Buoy	pg. 121
Writing Slate	pg. 122 - 123
Mouthpieces	pg. 124
Signalling Devices	pg. 125
Weight Accessories	pg. 126 - 127
Reels	pg. 128
Arrows	pg. 129
Drift Hook & Jon Lin	pg. 129
Clips & Lanyard	pg. 130 - 132
Key Chain	pg. 132
Dive Flag	pg. 132

11 -- EXPLODED VIEW & SERVICE KITS

Exploded View & Service Kits	pg. 133 - 149
------------------------------	---------------

DELTA

J-1900/E ONE SIZE FIT MOST NEW

- Features include:
- 33lbf(147N) back inflated bladder
 - Stainless steel D-rings, 2 on Shoulder, and 2 on waist Harness
 - Reshaped and upgraded bladder provides better control of buoyancy and keeps divers at vertical position at the surface
 - K style power inflator with pull dump
 - 16" Military grade corrugated rubber inflation hose
 - 2 quick-release weight pockets; Max. load 4kg(8.8lb) each
 - ONE SIZE FITS MOST

CE APPROVED



Eco

J-1800

- Features include:
- Back-inflated style BCD
 - Comes with bungee cords to secure the bladder close to torso
 - Durable 420D TPU coated nylon fabric
 - Foamed back pad provides extra comfort
 - Integrated weight pockets at both sides of the BCD which can be loaded up to 4KG(8.8lb) each
 - 2 extra weight pockets are designed on the tank band; up to 2KG(4.4lb) each
 - Flat dump valve design with waterproof OPRV
- CE APPROVED



SIZES	Buoyancy	Chest(cm/inch)	Waist (cm/inch)
S	110N(11.2kgf/24.7lbf)	112.5-130/44.3-51.2	78-117/30.7-46
M	110N(11.2kgf/24.7lbf)	112.5-130/44.3-51.2	83-122/32.7-48
L	150N(15.3kgf/33.7lbf)	112.5-130/44.3-51.2	90-129/35.4-50.8
XL	150N(15.3kgf/33.7lbf)	112.5-130/44.3-51.2	101-140/39.8-55.1

HARD GEAR

Mercury

J-1700

- Features include:
- Durable 420D TPU coated Nylon shell.
 - Cold water capable power inflator (IF-1700/N) with pull dump.
 - 2 additional rear quick dump valves.
 - Adjustable sternum strap.
 - 2 rear trim pockets take up to 1kg (2.2lb) of weight each.
 - 2 integrated weight pockets (4kg each).
 - Padded backpack.
 - All new designed waterproof dump valves that prevent water from entering the bladder when deflate.
 - Traditional jacket style BCD

CE APPROVED



SIZES	Buoyancy	Chest(cm/inch)	Waist (cm/inch)
XS	120N(11.8kgf/26lbf)	66-91/26"-36"	64-81/25"-32"
S	140N(14.1kgf/31lbf)	76-102/30"-40"	74-91/29"-36"
M	170N(17.2kgf/38lbf)	87-112/34"-44"	84-102/33"-40"
L	220N(22.2kgf/49lbf)	97-122/38"-48"	94-112/37"-44"
XL	270N(27.2kgf/60lbf)	102-127/40"-50"	104-122/41"-48"

HARD GEAR

Hope

J800-1000D

- Features include:
- Simple yet traditional jacket style BCD
 - Tough 1000D cordura.
 - Cold water capable power inflator with pull dump.
 - 2 additional rear quick air dump valve.
 - Adjustable sternum strap.
 - Strong and lightweight delrin D-rings.
 - 2 roomy side pockets with Velcro closure
 - Padded backpack.

CE APPROVED



SIZES	Buoyancy	Chest(cm/inch)	Waist (cm/inch)
XXS	70N(6.8kgf/15lbf)	66-91/26"-36"	64-81/25"-32"
XS	120N(11.8kgf/26lbf)	66-91/26"-36"	64-81/25"-32"
S	140N(14.1kgf/31lbf)	76-102/30"-40"	74-91/29"-36"
M	170N(17.2kgf/38lbf)	87-112/34"-44"	84-102/33"-40"
L	220N(22.2kgf/49lbf)	97-122/38"-48"	94-112/37"-44"
XL	270N(27.2kgf/60lbf)	102-127/40"-50"	104-122/41"-48"

HARD GEAR

IF-O INFLATOR OCTOPUS

IST's high-performance second stage regulator combined with power inflator.

IF-O is set in front of you, unlike a traditional octopus, and can be reached at any time when emergency.

- Coupled with our high-spec, large bore intermediate pressure hose. Max. service pressure @34.5bar (500psi).
- Ultra soft front cover allows you to reach the purge button easily.
- Cracking pressure setting @1.4 ~ 1.6 inch of water.
- Max. service intermediate pressure @10bar (145psi).
- Designed to fit 3/4" rubber inflator corrugated hose.



IFO-38A ADAPTOR

Adaptor for IST IF-O inflator octopus with 1" corrugated hose



HARD GEAR

R-860, R-860/5 FLAGSHIP DIAPHRAGM REGULATOR

This latest regulator from IST is not only feature-packed and capable of handling a high work load, it can also be used in both warm and cold water conditions.

CE APPROVED



R-8 BALANCED DIAPHRAGM 1ST STAGE

- The R-8 balanced diaphragm 1st stage has a high-flow, fast-acting valve system that is capable of delivering large amount of breathing gas in an instant, irrespective breathing demand, cylinder pressure or depth. It has not only passed the stringent CE test but the performance is comparable with the best available
- 4 intermediate pressure ports (located in the swivel turret) and 2 high pressure ports
- Available with Yoke or 300 bar DIN (G5/8) connector
- Anti-freeze models are available separately
- Inter. pressure setting @ 206 bar (3000psi): 3820L/min (135cuft/min)



R-8/5 BALANCED DIAPHRAGM 1ST STAGE WITH 5TH PORT

- Extension design from IST R-8 balanced diaphragm 1st stage with an additional intermediate pressure port (5 ports in total)
- Also available in DIN (G5/8) connector. (Only anti-freeze model)

O-60 BALANCED 2ND STAGE

- The O-60 second stage is equipped with a metal balancing tube and an adjustment knob. They are able to meet heavy breathing demand with ease and in extremely cold water they also act as heat sink to prevent icing.
- Ease of breathing is achieved by a purposely shaped housing interior, which is designed to create a pressure drop in the area just before the mouthpiece. This means air gets pulled towards the diver's mouth directly after leaving the valve.
- The volume of air leaving the valve can be fine-tuned by the adjustment knob on the side of the O-60 at any time so the diver can choose to breathe conservatively, or to open the valve up for more air in physical demanding situations.
- The pre-dive/ dive switch next to the adjustment knob prevents the valve from free-flowing while on the surface.
- The second stage comes with our high-spec, large bore intermediate pressure hose (max. service pressure @ 34.5 bar/ 500psi) which flows sufficient breathing air even when the demand is heavy.
- Cracking pressure setting @0.8 ~ 1.2 inch of water
- Flow rate @ 206 bar (3000psi): 30_cuft/min
- Max service intermediate pressure @ 10 bar (145psi)



HARD GEAR

R-750 FLOW-THROUGH PISTON REGULATOR

- IST's R-750 was designed and developed with reliability as main priority. It is simple to use and easy to service. The proven technology used means with proper care and maintenance, it gives years of trouble-free diving.
 - For use in waters warmer than 10 °C
- CE APPROVED



R-7 FLOW-THROUGH PISTON 1ST STAGE

- Piston technology has been used in SCUBA for many years; this 1st stage can handle lots of abuse and is easy for technicians to service.
- Available with Yoke 200 bar.
- Inter. pressure setting @ 9.5-10.0 bar (137-145psi) Ventilation rate @ 206 bar (3000psi): 3110L/min (110 cuft/min.)
- 4 intermediate pressure ports and 1 high pressure port.



O-50 DOWN-STREAM 2ND STAGE

- Reliable and robust, the O-50 uses the time-proven, easy to service down-stream valve. Coupled with our high-spec, large bore intermediate pressure hose (max. service pressure @ 34.5 bar/ 500psi), it flows more than enough air even when breathing demand is high
- The light-action purge button is easy to access
- The pre-dive/ dive switch atop the second stage housing prevents free-flow while the diver is on the surface
- Cracking pressure setting @ 1.2 inch of water
- Flow rate @ 206 bar (3000psi): 30 cuft/ min
- Max service intermediate pressure @ 10 bar (145psi)



HARD GEAR

O-50 NON-ADJUSTABLE OCTOPUS

- Reliable & robust, this octopus is simple to use and easy to service.
- Comes with 90cm (36") long intermediate pressure hose.
- Cracking pressure setting @ 1.2 inch of water.
- Flow rate @ 206 bar (3000psi): 30+ cuft / min
- Max service intermediate pressure @ 10 bar (145psi)



O-60 ADJUSTABLE OCTOPUS

- Ease of breathing is achieved by a purposely shaped housing interior, which is designed to create a pressure drop in the area just before the mouthpiece. This means air gets pulled towards the diver's mouth directly after leaving the valve.
- The pre-dive / dive switch next to the adjustment knob prevents the valve from free-flowing while on the surface.
- The second stage comes with our high-spec, large bore intermediate pressure hose (max. service pressure @ 34.5 bar / 500psi) which flows sufficient breathing air even when the demand is heavy.



O-10 ADJUSTABLE OCTOPUS

- Built-in heat exchanger
- Special designed adjustable vane can either direct air smoothly for effortless breathing or to deflect flow movement for gas conserving mode.
- Exhaust cover with curvature which directs bubbles away from field of vision
- Comes with high quality 90 cm (36") LP hose.



O-20 NON-ADJUSTABLE OCTOPUS

- Same features as the O-10 but without the adjustable output knob
- Comes with high quality 90cm(36") LP hose.



O-6000 LOW-PROFILE OCTOPUS

- Small frontal profile (only 4.2cm / 1.65" in height) .
- Comes with high quality 90cm (36") LP hose.



HARD GEAR

GP-9200 TRIPLE GAUGE CONSOLE

- Standard pressure gauge, depth gauge and compass.
- Large gauge face is easy to read.
- Max. Depth rating: 80M (262ft)
- Max. pressure reading: 300 bar (or 5000 PSI)
- Standard 30" (76cm) high-pressure hose included.
- Available in Metric and Imperial readings (sold separately).

CE APPROVED



GP-500 MINI TRIPLE GAUGE CONSOLE

- Mini pressure gauge and depth gauge console with the compass located on the reverse side.
- Large compass with bezel and side window for easy reading.
- Maximum depth reading: 60m (200ft)
- Maximum pressure reading: 400 bar (or 5000psi)
- Glow in the dark gauge faces.
- Available in Metric and Imperial readings (sold separately).

CE APPROVED



GP-600 MINI TWO GAUGE CONSOLE

- Same features as GP-500 with a mini writing slate at the back instead of the compass.
- Available in Metric and Imperial readings (sold separately).

CE APPROVED



GP-23 WRIST COMPASS

- Bezel with side window for easy reading
- Luminous face
- Durable boot with strap



GP-25 SPG

- Submersible pressure gauge available in bar (Max. 300bar) and psi (Max. 5000psi) readings
- Equipped with 15.2cm (6-inch) long high pressure hose as standard
- Tempered glass cover and luminous dial design
- Designed for tech diving

CE APPROVED



GP-16/ GP16-OX PONY BOTTLE GAUGE

- Small and compact, measures 1.8cm (0.7") wide and weighs 40g (1.40oz)
- Glow in the dark gauge faces.
- Maximum pressure 350 bar (or 5000psi)
- GP16-OX for nitrox divers.



GP-16



GP16-OX

GP-15 MINI SPG

- Super low profile, lightweight pressure gauge encased in durable TPR boot
- Luminous dial face
- Maximum pressure reading: 400bar (or 5000psi)

CE APPROVED



DA-01

- 1.5m long DIN to DIN (G 5/8) tank equalizer hose with bleeder valve.



DA-02

- 1.5m long DIN to DIN (300 bar, G 5/8) tank equalizer hose with bleeder valve and pressure gauge.



YA-01

- 1.5m long Yoke to Yoke tank equalizer hose with bleeder valve.



YA-02

- 1.5m long Yoke to Yoke tank equalizer hose with bleeder valve and pressure gauge.



HARD GEAR

CT-1/N

- DIN tank pressure checker (300 bar, G 5/8)



CT-2/N

- Yoke tank pressure checker



CT-3

- Intermediate pressure checker (BC hose connector)



CT-6

- 2nd stage in-line adjustment tool with intermediate pressure gauge



CT-7

- Quick-Connected Yoke tank pressure checker



HIGH PRESSURE HOSE

HP-6in

STAGE BOTTLE HIGH PRESSURE HOSE

Length: 15cm (6") Color: BK



HP-24in

SPG HP HOSE

Length: 61cm (24") Color: BK



HP

SPG HP HOSE

Maximum service pressure at 300 bar (4350 psi)
Length: 76cm (30") Color: BK



HARD GEAR

LOW PRESSURE HOSE



BK

NY GN

QUICK CONNECT BC HOSE



BK

RUBBER
LOW PRESSURE HOSES

		Length	Color
Quick Connect	LP-22in/BC	56cm (22")	BK
	LP-BC	69cm (27")	BK
Regular	LP-22in	56cm (22")	BK , NY , GN
	LP-1	69cm (27")	BK , NY , GN
	LP-OCTO	90cm (36")	BK , NY , GN
	LP-40in	100cm (40")	BK , NY , GN
	LP-5ft	152cm (5')	BK , GN
	LP-7ft	213m (7')	BK , GN

BRAIDED
LOW PRESSURE HOSE



BK

NY B GN W P

BRAIDED
QUICK CONNECT BC HOSE



BK

BRAIDED
LOW PRESSURE HOSES

		Length	Color
Quick Connect	LP-22in/BC/MF	56cm (22")	BK , GN
	LP-BC/MF	69cm (27")	BK
Regular	LP-22in/MF	56cm (22")	BK , NY , GN
	LP-1/MF	69cm (27")	BK , NY , GN , B , W , P
	LP-OCTO/MF	90cm (36")	BK , NY , GN , B , W , P
	LP-40in/MF	100cm (40")	BK , NY , GN
	LP-5ft/MF	152cm (5')	BK , GN
	LP-7ft/MF	213m (7')	BK , GN

HARD GEAR

BP1-1 BACK PACK

Classic diving backpack with tank bands and high quality webbing set. (304 S.S. cam buckle)



BP2/I TANK STRAP

The strong, lightweight cam buckle can withstand rigorous use. Supple 2" (5 cm) webbing makes threading an easy task. Fits tanks with diameter from 175mm(6.9") to 203mm(8")



OPRV-1

- Adjustable 1st stage over pressure valve.
- Pressure releases from 11.7 bar (170 PSI) up.



MPC OCTOPUS COVER

- 2nd stage/ octopus mouthpiece cover.
- Can be used as an octopus holder.
- Can be used with a variety of mouthpieces.



SFP-1 OCTOPUS PLUG



BP-6 BP6-1

TANK BAND WITH STAINLESS STEEL CAM BUCKLE

- Quick-release design tank band, only need to be set up for one time.
- Material: high quality webbing and 304 stainless steel cam buckle.
- For cylinders with outside diameter 7.25" (BP-6) and 5.25" (BP6-1)



BP2/S STEEL CAM BUCKLE CYLINDER BAND

The cam buckle is made from 316 stainless steel. It is high in tensile strength and is resistant to corrosion. This cylinder band is a great upgrade from our standard BP2. Fits cylinder with outside diameter from 183mm (7.25") to 203mm (8").



DC-2P

1ST STAGE PLASTIC DIN DUST COVER



ON-1 OCTOPUS NECKLACE

- Material: Silicone
- ON-1 is worn around the neck so the octopus can be quickly located in an emergency.

SIZES	CIRCUMFERENCE
S	60cm (23.5")
M	72cm (28.3")
L	80cm (31.5")



SFP-2 OCTOPUS PLUG



HARD GEAR

HPSW1

HIGH PRESSURE HOSE SWIVEL SPOOL

- Shouldered air spool.



HPSW2

HIGH PRESSURE HOSE SWIVEL SPOOL

- Standard air spool.



HPSW3

HIGH PRESSURE HOSE SWIVEL SPOOL

- Long air spool.



DT-1 DIVER'S TOOL

- Overall length: 12cm (4.7") when folded
- It contains:

Philips screwdriver	x1
Flat screwdriver	x2
Awl	x1
Allen Key in 4mm & 3/16	x2
Wrench in 15mm, 5/8", 1/2", 9/16", 11/16", and 13/16"	x6



DT-2 DIVER'S TOOL KIT

- Handy tool kit for convenient and quick maintenance of diving equipment.
- It contains:

Knife	x1
5" long osee pliers	x1
Awl	x1
1/4" sockets: 4mm, 4.5mm	x2
Assorted screwdriver bits	x7
6" adjustable spanner	x2
Cable tie	x4
1/4" drive	x1
Allen key: 4mm, 5mm, 6mm, 3/16"	x4
1/4" adapter	x4



DT-5

- Overall length: 6cm(2.35") when folded
- It contains:

Allen key: (1/4", 3/16" 5/32")	x3
O-ring pick	x1
Philips screwdriver	x1
Orifice adjustment flat screwdriver	x1
Inflator Schrader valve tool	x1
Valve nut slotted screwdriver	x1



DT-6

YOKE TOOL FOR R-7 1ST STAGE



DT-7

YOKE TOOL FOR R-8 1ST STAGE



DT-4 TECHNICIAN'S TOOL KIT



Allen key: (4mm, 5mm, 6mm, 8mm, 3/16")	x5	Pointed C-clip pliers	x1
Adjustable spanner	x1	Awl	x1
Phillips screwdriver	x1	Zip ties	x5
Flat screwdriver	x1	Knife	x1
2nd stage 4 slot tool	x1	O-ring hooks	x3
2nd stage orifice adjustment tool	x1	Silicone grease	x1
1st stage pin spanner	x1	BCD low-pressure hose valve tool	x1
1st stage face tool	x1	Tank valve knob screw driver	x1
1st stage handle: connect to low-pressure port and high-pressure port			
O-rings for: 1st stage LP port/ 1st stage HP port/ 2nd stage LP hose/ BCD LP hose valve/ Yoke or DIN tank valve			

HARD GEAR

DT4-01 ALLEN KEYS

4mm, 5mm, 6mm,
8mm, 3/16"



DT4-02 TANK VALVE KNOB SCREWDRIVER



DT4-05 2ND STAGE 4 SLOT TOOL



DT4-07 1ST STAGE REGULATOR PIN SPANNER



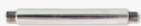
DT4-0T4 O-RING HOOKS

Comes in 3
different styles



DT4-08 1ST STAGE REGULATOR HANDLE

To connect to low-pressure
port or high-pressure port
and helps divers to handle the
1st stage steady when doing
maintenance



SGT-5 SILICONE SPRAY

- 250ml(8.5oz)
- For lubrication on
O-rings or any other
product



SGT-2 SILICONE GREASE

- 60g(2.12oz) silicone
grease.
- Large volume for
shop use.



SGT-4 SILICONE GREASE

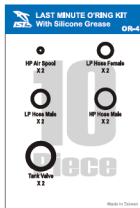
- 15g(0.53oz) silicone
grease tube



OR-4 10PCS DIVER'S O-RING KIT

• Contains:

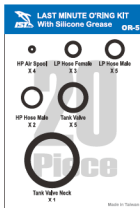
SPG swivel spool O-rings	X2
Low pressure hose female O-rings	X2
Low pressure hose male O-rings	X2
High pressure hose male O-rings	X2
Tank valve (YOKE) O-rings	X2
Silicone grease (2g)	X1



OR-5 20PCS DIVER'S O-RING KIT

• Contains:

SPG swivel spool O-rings	X4
Low pressure hose female O-rings	X3
Low pressure hose male O-rings	X5
High pressure hose male O-rings	X2
Tank valve (YOKE) O-rings	X5
Tank O-ring (neck)	X1
Silicone grease (2g)	X1



VP-3 YOKE VALVE DUST COVER



VP-4 DIN VALVE PLASTIC CAP



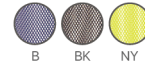
TK-1 TANK KNOB

- Material: Rubber
- Available in black or green to
signify Nitrox / Oxygen tanks.



TP-1 TANK PROTECTIVE MESH

- Prevents much of the scuffing on
tank surface.
- Fits tank with diameter between
17.5cm(6.9") and 18.4cm(7.25")



BCHH-3

- Overall Length: 11.5cm (4.5")
- 3 hose holders with clip.



HP-2 HOSE PROTECTOR

- Prevents hose being
kinked at the base.

Base Diameter
Ø1.4cm (Ø0.55")



HARD GEAR

TH-1 TANK CARRYING HANDLE

Inside diameter: 3.9cm(1.5")



SBR-2 (FOR TANK 7" - 7.25")

SBR2-1 (FOR TANK 5.25") STAGE BOTTLE RIGGINGS



TB-1 PLASTIC TANK BOOT

- Fits tank with
Ø18.4cm(7.25")
- Drainage channels and
holes.



TB-2 RUBBER TANK BOOT

- Fits tank with
Ø18.4cm(7.25")
- Drainage channels and
holes.



BCHH HOSE HOLDER

Can be clip on to D-rings to arrange
hose in a tidy manner and reduce
drag.



HP-4 HOSE PROTECTOR

- Larger caliber base easy installation.

Inside Diameter
Base Ø1.8cm (Ø0.71")
Top Ø1.2cm (Ø0.47")



HARD GEAR

YK-03

- DIN to Yoke 1st stage converter – for either 200 or 300 bar (G 5/8) DIN connectors



YK-04

- DIN to Yoke tank valve converter – for tanks with 200 bar DIN outlet (G 5/8) only



N-1

- Air nozzle with BC hose connector
- For land use only!



N-3

- 2nd stage in-line safety shut-off valve, which can shut down gas supply to a frozen and leaking 2nd stage.



N-4

- 90° adapter for 2nd stage.



N-5

- Stainless air nozzle
- For land use only!



N-6

- Tire inflator



N-7

- 2nd stage swivel



N-8

- Copper chrome plating covered by aluminum alloy.
- QD connector design for BC hose.
- With this inflator, FD-IT/15 inner tire can be fully inflated in 15 seconds.



RA-1

- Adapter: 9/16" male to 3/8" female



RA-2

- Adapter: 1/2" male to 3/8" female



RA-3

- Adapter: 3/8" male to 1/2" female



RA-4

- Adapter: 3/8" male to 7/16" female



RA-5

- Adapter: 7/16" male to 3/8" female



RA-6

- 1st stage 110° adapter changes the angle the intermediate pressure hose leaving the 1st stage for better hose routing and streamlining purpose



RA-7

- Additional high-pressure port to your regulator's 1st stage.
- One 7/16"-20 male to two 7/16"-20 female outlets.
- The additional port allows 360° swivel.



RA-8

- Additional low-pressure port available on your regulator's 1st stage.
- One 3/8" male to two 3/8" female outlets.
- Allows 360° swivel.



RA-9

- 1st stage 90° adapter changes the angle of the high pressure hose leaving the 1st stage for better hose routing and streamlining purpose.
- Allows 360° swivel.
- 7/16" male to 7/16" female



RA-10

- Regulator hose to standard BC inflator hose converter



Anti-Fog Lens

ANTI-FOG LENS FILM

NEW

Foggy Mask Lens is a common problem and a very annoying situation for every diver. The anti-fog spray may temporarily solve the problem, but it has to be applied on each dive. IST's newest technology in Anti-Fog Lens Film makes you no longer have foggy mask problems! Prior to the first time using, simply remove the matte protective film inside of the mask. Rinse with water before each dive for a better experience. Treat with care, avoid of cut, scratch and high temperature. Clean with fresh water instead of detergent and cleanser

MP-201/AF PROTEUS



M-55/AF CORONA



MP-203/AF HUNTER



ME55/AF PROEAR MASK



FOG-FREE VISION FOR EVERY DIVE!



MP-203 HUNTER

- Extremely low volume design.
- Swivel and easy-adjust buckles.
- Ideal for hunters and photographers.
- The highest grade silicone available for a soft comfortable seal.
- Perfect as a spearfishing, free diving or back-up mask as it folds and fits easily in your BCD pocket.
- Tempered glass for safety and durability.
- Non-polish finished mask skirt prevents from reflecting of sunlight.
- Anti-fog lens available.

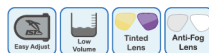
W **NEW**C **NEW**

BS

MB **NEW**

MP-201 PROTEUS

- Comes with tinted lenses to enhance underwater colors
- Metal-Like painting technology for more colors of choice
- Super low volume design makes this mask become the best choice for free diving
- Anti-fog lens available.



CB



BS

BSM-BK/Y
Grey lens with mirror reflectionBSM-SV/R
Blue lens with orange reflection

W/PR

SOFT GEAR

MP-112 BURANO

- Ultra soft and comfortable single lens silicone mask
- Metal-Like color painting technology



BS/PR

P/PR

MP-208 ATUM

- Frameless twin lens mask made from hypoallergenic liquid silicone
- Low interior volume design
- Perfect for free diving



BS

W

M-27 TORTUGA

- Fine non-polished painting technology for more color options on this stainless steel frame mask
- Best for underwater photo shooting



BS/SS-B

BS

BS/SS-BK

BS/SS-HP

C

SOFT GEAR

MP-110 π Pi

- Frameless mask made from hypoallergenic liquid silicone
- Easy adjusting mask buckles attached to the skirt.
- Fits a wide range of facial profiles with comfort.



C

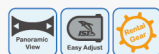
BS



W

MP-111 Scope

- Single-lens mask with hypoallergenic silicone skirt



W

B

GN

NY

HP

BS/PR

BS/B

BS/GN

BS/O

BS/HP



T

MP-300 SKYLOPS

- Syklops is a single-lens aluminum mask that gives the divers or snorkelers a great field of vision with its wide lens design.
- The super clear, tempered glass lens and the supple hypoallergenic liquid silicone skirt are held together in the 6000 series marine grade **aluminum frame**.



BK/W

BK/BK

BK/Y

BS/BK

BS/B

BS/W

BS/Y



BK/B

SOFT GEAR

M-100 PANORAMA

Panorama is the original IST **metal mask**. By using lightweight and robust 6000 series aluminum, this mask is possibly the strongest on the market today. The frame measures only 8.1mm (0.32") in thickness and the bridge area is merely 7.3mm (0.29") in width.



T



M-200 SYNTHESIS

By combining CNC and plastic injection construction methods, the Synthesis uses the same **aluminum** as the Panorama to give the mask its stout base to support the twin-colored sub frame.

OL80/OL80M

- Optical lenses are available in
- 1.0 to -8.0 in -0.5 decrement (also for tinted lens)
- +1.0 to +4.0 in +0.5 increment (not available for tinted lens)
- Left / Right or tinted optical lenses are interchangeable.



BK



MP-207 GAUGE

- Twin lens mask with built-in bifocal lens (+1.75).
- Magnifying lenses at an angle to improve downward vision providing magnification.
- N/A in N. America.



BS



CB

SOFT GEAR

M-9 SATURN

An old favorite with quality silicone skirt designed to fit wide range of facial profiles. Optical lenses can be easily installed **TOOL-FREE!**

OL4

- Optical lenses are available in diopter from -1.0 to -8.0 in -0.5 decrement
- Left / Right lenses are NOT interchangeable.



BS/NY



M-75 MARTINIQUE

The colorful Martinique has a twin-injection sub frame that gives this mask a modern appearance. The comfortable, high quality hypoallergenic silicone skirt fits a wide range of facial shapes with an assuring seal.



MT **NEW**



M75-1 MARTINIQUE NARROW



W/P



SOFT GEAR

M-55 CORONA

Corona has been one of the most popular IST masks and its superior fitting and comfort are the reasons behind the success. Its swivel buckle allows the diver to adjust the mask to the most desirable position. The low internal volume gives unrestricted view.

- Anti-fog lens available.

OL55/OL55M

- Optical lenses are available in -1.0 to -8.0 in -0.5 decrement (also for tinted lens)
- +1.0 to +4.0 in +0.5 increment (not available for tinted lens)
- Left / Right or tinted optical lenses are interchangeable.

OL55/S

- Optical lens stickers at the bottom of the lens for ME55 and M-55 masks. Available in diopter from +1.0 to +4.0 in 0.5 increment.
- Left / Right lenses are NOT interchangeable.



BS/CH **NEW**
The latest chrome plating technology gives Corona mask a refreshing outlook.



B



BK



NY



BS

M-88 BLUETECH

The bendable buckles are attached to the stretchy hypoallergenic silicone skirt so they will not interfere with fitting and this feature enables the mask to be packed into tight luggage space while preparing for a trip.



BS/BK

W/MK

CB

W/P **NEW**



W/NY **NEW**

M-11 DYNASTY

Equipped with a protected nose purge which enables hand-free water clearance and equalization can be easily achieved even when wearing thick gloves.



BK



BS



NY



CB

M-12 IMPERIAL

One of IST's most popular multi-window masks, the Imperial is popular with snorkelers and divers who needs hand-free water clearance and panorama-like view with good peripheral vision.



BS



CGN



NY



CB

M-45 VENUS

Oversized lens design significantly increases field of vision horizontally and as well as vertically. The internal volume, however, is not increased noticeably as the lens is brought closer to the eyes as much as possible.



BS



CB



MK

SOFT GEAR

M-50 SHADOW

Oversized lens design significantly increases field of vision horizontally and as well as vertically. The internal volume, however, is not increased noticeably as the lens is brought closer to the eyes as much as possible.



BK B NY



BS/BK **NEW**

M-67 PRESTO

Presto is a compact 4-window mask that offers panoramic view with unsurpassed peripheral vision. Unlike other masks with multiple windows, the internal volume and weight are kept well down with innovative designs. Presto is better suited for people with slightly narrower facial profile.



CB

M-80 SEARCH

Low in profile and internal volume, Search's swivel buckle can be adjusted to suit each diver's preferences. The mask is well suited to people with slightly narrower face.

OL80/OL80M

- Optical lens are available in
-1.0 to -8.0 in -0.5 decrement (also for tinted lens)
+1.0 to +4.0 in +0.5 increment (not available for tinted lens)
- Left / Right lenses are interchangeable.



CB

SOFT GEAR

M-30 DRAGO

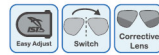
The mask's buckles are directly attached to the skirt and this makes DRAGO extremely comfortable to wear.

The minimalistic construction ensures durability and well-suited for rental use.

- Comes with tinted lenses to enhance underwater colors
- Using latest painting and e-plating technology on this classic mask to give it a new life!

OL2/OL2M

- Optical lenses for M-30 DRAGO are available in diopter from -1.0 to -8.0 in -0.5 decrement.
- Left / Right or tinted optical lenses are interchangeable.



BS/PR



BK NY B BS BS/CH BS/GN

M2-R AQUILA

Material: Rubber



M37 PEGASUS

Material: Black Silicone or Rubber



PROEAR MASK

Difficulty in equalization or the potential ear infections are problems that can happen to any diver regardless of their experience. It can become serious enough to stop one from diving. Solution: The IST ProEar Mask is manufactured to the highest standard and only the best available materials are used. It is designed to counter most of the unavoidable effects of pressure or water has on ears so you can have a more enjoyable underwater time.

REACH Approved
EN 16805 Approved

Strap

Mounted on swivel buckles, the silicone strap with its large contact surface secures the mask to the wearer.

Skirt

Made from the best grade of crystal clear, hypoallergenic silicone, the skirt is soft and automatically conforms to a wide range of facial profiles.

Ear Covers

The soft silicone Ear Covers forms a water tight seal between the ear drum and the cover. The pressure buffer created to have the same pressure as your nasal cavity mask when air exhaled through the nose is introduced through the Equalization Tubes. Therefore the ear pressure in the middle and outer area is the same and the "squeeze" from the ambient will be significantly reduced. Other benefits from keeping the ears sealed also include reducing the chance of an ear infection from water, plus improved sense of direction and warmth retention.

Equalization Tubes

With one-way valve placed inside each tube, air is allowed to travel only from the mask to the ear covers for pressure equalization and water clearance while stopping water from flooding the mask in the unlikely event of flooded Ear Covers.

Optical Lenses(ME80)

OL80/OL80M

- Optical lens are available in -1.0 to -8.0 in -0.5 decrement (also for tinted lens)
- +1.0 to +4.0 in +0.5 increment (not available for tinted lens)

OL55/OL55M (ME55/ME55AF)

- Optical lenses are available in -1.0 to -8.0 in -0.5 decrement (also for tinted lens)
- +1.0 to +4.0 in +0.5 increment (not available for tinted lens)
- Left / Right or tinted optical lenses are interchangeable.

OL55/s

- Optical lens stickers at the bottom of the lens for ME55 and M-55 masks. Available in diopter from +1.0 to +4.0 in 0.5 increment.
- Left / Right lenses are NOT interchangeable.

How does the ProEar mask function?

The squeeze we feel during a dive is caused by the imbalance of pressure either side of the ear drum. While our ear canal is exposed to water and ambient pressure, our middle ear (which is on the other side of the ear drum and is connected to our nasal cavity by Eustachian tube) is still filled with air and experiences less pressure. The greater external force is able to push our ear drum inward, causing discomfort or pain. With ProEar mask, the ears are completely sealed off from the outside. To have the same pressure as your nasal cavity, it is able to be introduced through the Equalization Tubes into the Ear Covers. Therefore the pressure on both sides of the ear drum becomes equal. So as pressure and depth increase, the simple act of breathing air into your Ear Covers can significantly improve your enjoyment of diving!



Benefits of using IST ProEar mask

- Pressure equalization can be easier achieved!
- Prevents pressure induced ear ache (barotrauma)
- Enhanced underwater hearing and sense of direction.
- Stops dirty / polluted water from entering the ear causing infection.
- Increased warmth around the ear in cold water condition (a specially designed ProEar hood is available separately)

Available models

ME80-CB



ME80-06



ME55-BS



ME55/AF



ME67-CB



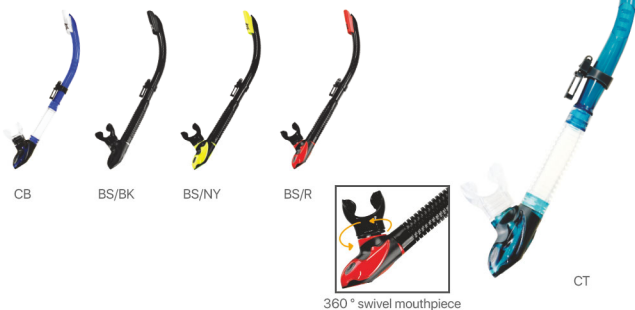
ME59-CB

For junior



SN-104 SNORKEL WITH SPLASH GUARD & DRAIN VALVE

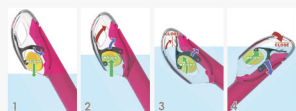
- Silicone mouthpiece and purge valve for easy water clearance
- Splash guard top to channel the incoming water away efficiently
- 360 degree swivel mouthpiece
- The main tube is made from the environmental friendly PU material

**SN-204** DRY SNORKEL

An evolution from the dry top system of IST SN-204, this whole new patent pending dry top system has combined the flotation device and the valve mechanism to make it to work more smooth when closing the valve at any swimming position and eliminate to possibility of locked air way.

Features include:

- High grade silicone centerpiece and mouthpiece
- Swivel and QD snorkel holder
- Ergonomic design to the mouthpiece for easier bite

**SN-60** SNORKEL WITH SPLASH GUARD & DRAIN VALVE

- Silicone mouthpiece and purge valve for easy water clearance
- Splash guard top to channel the incoming water away efficiently
- 18 different colors combinations provide various of choices



SOFT GEAR

SN-36 FREEDIVING SILICONE SNORKEL

- Simple silicone snorkel which can be bent and stored in BCD pocket when not in use.



SN-301

- Non-purge snorkel with a stout snorkel holder.
- The silicone mouthpiece provides significant comfort which can decrease the level of jaw fatigue.



SN-7

- Silicone mouthpiece



SOFT GEAR

SN-103 SNORKEL WITH SPLASH GUARD & DRAIN VALVE

High-grade silicone mouthpiece offers a wide angle to spread bite force when snorkeling, lessening jaw fatigue.

- Silicone mouthpiece
- Equipped with splash guard and purge valve for easy water clearance
- Good for rental



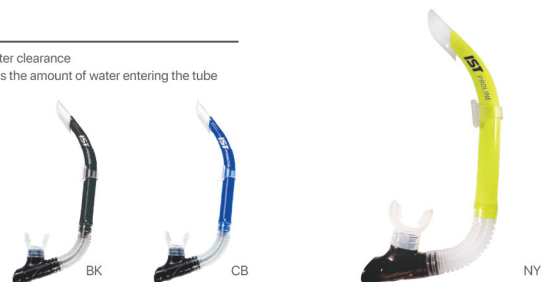
SNK-16

Double bend silicone snorkel with splash guard and clearance purge.



SN-45/S

- Purge valve for fast water clearance
- Splash guard minimizes the amount of water entering the tube



SOFT GEAR

FP-02 **NEW** Safari

IST Safari Ultra-Light fin brings the most comfort and convenience yet performs powerful thrust output. **One-piece design, made from a special compounded formula TPR material eliminates every possible break point caused by connecting two different materials**
A softer stiffness is made for the size of XS/S of the fin for an easier access for female and youth divers
Only 1.9kg (4.2lb) for size L/XL, your best choice for traveling ever.
Compatible with IST FS-15 silicone bungee fin strap for optional upgrades.



- IST new ultra silicone bungee fin strap system (#FS-15)
- Super simple to use and no adjustment needed
- Enlarged pull tab loop for easier donning and doffing
- Sizes: S: 22cm
M: 25cm
L: 28cm

SIZES	XS/S	M/L	L/XL
US	5-7	8-10	11-13
EURO	36-39	40-43	45-48
Weight	1.7kg	1.8kg	1.9kg



SOFT GEAR

FP-01 **SUMi**

By utilizing various materials' stiffness and innovative structural arrangements, SUMi was designed to produce propulsion efficiency. The end result is a pair of fins which is not only easy to kick with, but excellent momentum is created in the process to quickly propel the diver forward.

The fin's foot pocket fitting is the result of our extended research and manufacturing experience. This is an often neglected criterion when divers choose their fins. We are confident that SUMi will be one of the most comfortable fins that people put on.



- IST new ultra silicone bungee fin strap system (#FS-15)
- Super simple to use and no adjustment needed
- Enlarged pull tab loop for easier donning and doffing
- Sizes: S: 22cm
M: 25cm
L: 28cm



On top of the fin blade there are 6 water channeling guides to direct large amount of water backwards and the 22° blade-to-foot angle provides the best kicking efficiency.

COLOR	SIZES	SIZES	XS	S	M	L	XL
B, BK, NY	XS-XL	US	5-7	7-8	8-9	10-11	12-13
W/P	XS-S	EURO	36-38	38-39	40-42	43-45	46-48

SOFT GEAR

F-1 RUBBER FINS

- Traditional rubber fin with proven design
- IST stainless steel spring fin strap compatible

SIZES	M	L	XL	XXL	3XL
US	5	6-7	8-9	10-11	12-13
EURO	36	37-39	40-42	43-45	46-48



F-4 PROPULSION

- The fin is useful in open water but also capable of handling dive missions in confined spaces.
- Durable and long lasting.
- IST stainless steel spring fin strap compatible

SIZES	M	L	XL
US	5-6	7-9	10-12
EURO	36-38	39-42	43-46



FK-22 BORA BORA

- Rubber grip under the foot pocket is designed to prevent any slippage.
- Underside foot pocket drain hole makes every kick light and easier.
- Quick release buckles makes putting on and pulling off easier and faster.

SIZES	S/M	L/XL	XL/XXL
US	6-8	9-10	11-12
EURO	36-41	42-44	45-47



SOFT GEAR

FK-30 SPEEDY

- Open heel snorkeling fins.
- Comfortable foot pocket.
- Recommended to be worn with boots or neoprene socks.
- The blades are vented to guide water more efficiently.

SIZES	S/M	L/XL
US	4.5-8.5	10-13
EURO	37-41	44-48



B

BK



W

FK-31 OTTER

- Broad sizes range design.
- Open toe box for quick drainage.
- Short, light, achieving efficient propulsion.

SIZES	S	M	L
US	4-7	7-10	10-13
EURO	35-40	40-44	44-48



W

PR

O

HP

BK

GN

B

SOFT GEAR

F-12 SEA DIVER

- Durable and comfortable rubber fins
- Very flexible, powerful, and easy to maneuver
- Open toe box for quick drainage
- Broad sizes range.
- Sizes XXS and below are for children

SIZES	4XS	3XS	XXS	XS	S	M	L	XL
US	10-12	12-1	1-3	3-5	5-7	7-9	9-11	11-13
EURO	30-32	32-34	34-36	36-38	38-40	40-42	42-44	44-46



BK

F-20 SUPER S

- Balanced blade and comfortable foot pocket
- Broad sizes range.

SIZES	XXS	XS	S	M	L	XL	XXL
US	1-3	3-5	5-7	7-9	9-11	11-13	13-15
EURO	34-36	36-38	38-40	40-42	42-44	44-46	46-48



B

BK



NY

F-36 VELOX

- Balanced blade and comfortable foot pocket
- Open toe box for quick drainage
- Sizes 3XS to M for Color of Pink & White

SIZES	3XS	XXS	XS	S	M	L	XL
US	1-2	3-4	4-6	6-7	8-9	9-10	11-13
EURO	33-34	35-36	37-38	39-40	41-42	43-44	45-47



BK

NY

P

W

B

SOFT GEAR

CS75608

M75 + SN60 + CS8



BS/O

BS/GN

BS/BK

CT

W

CB

HP

PR

NY



CS8



MT

NEW

CS75-188

M75-1 + SNK-8 + CS8



NY

W/P

W/PB



CS8



CB

SOFT GEAR

CS111608

MP-111 + SN-60 + CS8



CS9168 NEW

M9 + SNK-16 + CS8



SOFT GEAR

CF-02

M-75 + SN-60 + FK31 + CS8-L

SIZES S, M, L



CF-03

MP-111 + SN-60 + FK31 + CS8-L

SIZES S, M, L



SOFT GEAR

MS-11

- Generic silicone mask strap.
- Good for IST masks M-9, M-11, M-12, M-30, M-50, M-55, M-59, M-67, M-71, M-80, M-100, M-300, MJ-111, MP-111
- Available in clear and black silicone.



MS-14

- Mask strap for M-37 Pegasus mask.
- Available in black silicone and rubber.



MS-17

- 2mm Neoprene strap cover and webbing strap built into one.
- Stops hair from getting entangled with equipment.
- Convenient mask adjustment.



MS-25

- Silicone mask strap.
- Specially designed for the following IST masks: M-45, M-75, M75-1, M-88, M-200, MP-110, MP-112, MP-201, MP-203, MP-207, MP208
- Available in clear, black, green and white.



MS-20

- Comfortable neoprene mask strap cover.



MB2 PLASTIC MASK BOX



MB8 LARGER PLASTIC MASK BOX



CS8 CS8-L

- 2-piece/ 4-piece combo set nylon mesh bag with straps.

DIMENSION	20cm x 44cm (7.9" x 17.3")
DIMENSION	32cm x 55cm (12.5" x 21.6")



AF-2/DOZ ANTI-FOG SPRAY

Anti-fog spray, comes in 30ml (1oz) bottles.



AF-3/DOZ ANTI-FOG GEL

- 30ml(1oz)
- Anti-fog protection for multi-dive



AF-4/DOZ ANTI-FOG GEL & LENS CLEANER

- 30ml (1oz)
- 2-in-1 formula for both anti-fog and lens cleaner



MS-80

- Silicone mask strap
- Specially designed for the ProEar masks.
- Available in clear and black silicone.



MS-16

Neoprene mask strap for ProEar masks.



SOFT GEAR

P1

Complete purge valve and housing for SN-18.



P1-1

- Silicone exhaust valve with Ø2.2cm (Ø0.87").
- For the following snorkels: SN-18, SN-60.



P1-2

- Silicone exhaust valve with Ø1.9cm (Ø0.75").
- For snorkels: SN-45/S, SN-103, SN104, SN-204, SNK-8, SNK-16, SNK-205.
- Also for the following mask: M-11 & M-12.



SH-1/S

- Available in clear, black silicone
- Can be used with tube up to 2.9cm (1.14") in outside diameter.



SH-60

- Snorkel holder for SN-60.



FS-15 BUNGEE FIN STRAP

- IST new ultra silicone bungee fin strap system
- Super simple to use and no adjustment needed
- Fits to IST FP-01, FP-02, F-4, FK-22 fins
- Enlarged pull tab loop for easier donning and doffing
- Sizes: S: 22cm, M: 25cm, L: 28cm



FS-2

- Rubber fin strap for F1 fin.



FS-7

- Rubber fin strap for FB-7.



FSK-31

- Fin strap for FK-30, FK-31, FK-09



FB7-SET

Fin strap set for FP01, FP-02, F-4, FK22



FB-7

Quick release fin buckle for FP01, FP-02, F-4, FK22



FBK-31

Quick release fin buckle for FK-30, FK-31, FK-09



FBK31-SET

Fin strap set for FK-30, FK-31, FK-09



FB-1

Stainless steel fin buckle for F1 fin



FG-1

Rubber fin grips

SIZES S, M, L



FS-10



FS-11



FS-12



Coil Fin Strap

Comes in various buckle designs to suit different types of fins.

Each style has 5 lengths for comfortable and secure fitting (approximate spring length):

	S	M	L	XL	XXL
LENGTH (cm)	18.5	20.4	22	23.8	27.3
LENGTH (in)	7.3	8.0	8.7	9.4	10.7

FS-10 Spring fin strap with complete IST FB-7 buckles
 FS-11 Buckles FS-11 Spring fin strap with metal "C" clip for F-1
 FS-12 Spring fin strap with stainless steel clip-on buckles

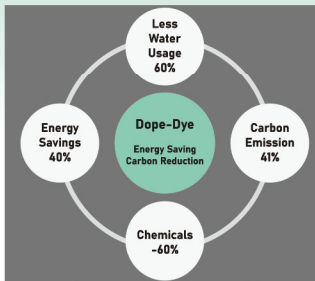


PURIGUARD NEW

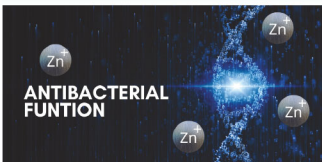
Nowadays, ocean environment is more polluted by many factors, such as marine plastics may provide few dissolved organic carbon sources for some bacteria to metabolize; this catch our attention and we have encouraged company wide eco-friendly innovation that offers added protection to water sports wears. We are proud to announce that we now offer neoprene products using PURIGUARD fabrics- an IST executive antibacterial neoprene series not only protects against bacteria but also shields divers.



PURIGUARD fabrics has Zinc-embedded treatment, Zinc ions damage DNA in bacteria cells and inhibit protein formation which destroy the activity of bacteria and the antibacterial effect is achieved. The new technology permanently treats textiles can both inhibit bacteria & odor as the same time. PURIGUARD fabrics have awarded us a 99% against Staphylococcus aureus which rate from the world renowned American Association of Textile Chemists and Colorists (AATCC). PURIGUARD fabrics also can protect us from harmful UV rays, it has UV protection UPF 50+.



TEST BACTERIA: STAPHYLOCOCCUS AUREUS		ATCC No.6538
TEST GROUP	CFU/mL	REDUCTION (R)%
UNTREATED CONTROL AT 10° HR (C)	1.7 X 10 ⁷	99
UNTREATED CONTROL AT 154° HR (B)	1.4 X 10 ⁷	
TREATED TEST AT 154° HR (A)	1.0 X 10 ⁷	



Moreover, PURIGUARD fabrics are no longer dyed post production which ensures 40% energy savings and 60% less water usage. Subsequently we are reducing chemical use by 60% and carbon emission by 41%. These numbers are not only significant but necessary to push forward our eco-friendly agenda.

Our goal is to continue to elevate the industry standard with protective and sustainable water sports apparel. With IST executive antibacterial technology, we can easily achieve multipurpose of antibacterial, odorless, UV protection and eco-friendly manufacturing solutions.

NEOPRENE GEAR

PG-WS80 (3MM)
PG-WS805 (5MM)
PG-WS807 (7MM)

DIVING JUMPSUIT

NEW

- IST's signature jumpsuits, constructed of high-grade neoprene in 3mm, 5mm and 7mm thickness options.
- Flat-lock stitching in the 3mm suit, double blind stitching in the 5mm and 7mm suits
- Super-stretch material at armpits and lower back area to maximize range of motion
- Special printing technique on shoulders and chest areas offers extra durability in areas prone to high wear when diving with a BCD
- YKK #5 zips at wrists and ankles
- Semi-dry technology is equipped on the 7mm suit at wrists and ankles



Integrated calf compression sleeves improve blood circulation to stave off leg cramps and fatigue.

SIZES	MEN'S	S	M	L	XL	XXL
WOMEN'S	5	7	9	11	13	

METRIC SIZE CHART

Men's	S	M	L	XL	XXL	Women's	5	7	9	11	13
Weight(kg)	61-73	74-86	87-97	98-106	107-115	Weight(kg)	51-55	56-60	61-65	66-70	71-75
Height(cm)	160-165	166-170	171-180	181-185	186-190	Height(cm)	155-160	161-165	166-170	171-175	176-180
Chest(cm)	91-95	96-101	102-109	110-114	115-119	Chest(cm)	85	88	91	96	100
Waist(cm)	73-78	79-83	84-93	94-99	100-105	Waist(cm)	61	64	66	71	76
Hip(cm)	89-94	95-100	101-109	110-114	115-120	Hip(cm)	89	94	99	105	110

NEOPRENE GEAR

PG-WS35 DIVING SHORTY NEW

- High-grade neoprene in 3mm with stylish blue-black flat-lock stitching.
- Super-stretch material at armpits and lower back area to maximize range of motion.
- Special printing technique on shoulders and chest areas offers extra durability in areas prone to high wear when diving with a BCD.



SIZES	MEN'S	S	M	L	XL	XXL
	WOMEN'S	5	7	9	11	13



PG-WSR10 3MM NEOPRENE SHORTY NEW

- 3mm Neoprene Shorty
- Optimized for use as rental gear.
- Large size marks on legs simplify finding and sorting sizes in the dive shop.
- Tough Rotex fabric at hips for greater durability; super-stretch fabric at armpits for greater movements.
- 3mm high-grade neoprene with flat-lock stitching.
- YKK #10 front zip for easier donning and doffing.



SIZES	MEN'S	S	M	L	XL	XXL
	WOMEN'S	5	7	9	11	13



Tough Rotex fabric at hips for greater durability.

SV (Men)

P (Woman)

PG-SHN01 NEW

- 1.5 mm neoprene top, a great choice for any kind of water sport



SIZES	S, M, L, XL, XXL
-------	------------------



IMPERIAL SIZE CHART

MEN'S	S	M	L	XL	XXL	WOMEN'S	5	7	9	11	13
Weight(lb)	135-162	163-185	186-215	216-235	236-255	Weight(lb)	110-121	122-132	133-143	144-154	155-165
Height(in)	5'3"-5'5"	5'6"-5'7"	5'8"-5'11"	6'-6'1"	6'2"-6'3"	Height(in)	5'1"-5'3"	5'3"-5'5"	5'5"-5'7"	5'7"-5'9"	5'9"-5'11"
Chest(in)	26/37	38/39	42/43	44/45	46/47	Chest(in)	33.5	34.5	36	38	40
Waist(in)	29-31	32-33	35-37	38-39	40-41	Waist(in)	24	25	26	28	30
Hip(in)	35-37	38-39	40-43	44-45	46-47	Hip(in)	35	37	39	41	43

NEOPRENE GEAR

PG-VSH0225 HOODED VEST NEW

- 2.5mm NYLON II Hooded Vest
- Front YKK#10 Zip
- Superstretch fabric on Hood and torso sides
- Smooth skin face seal restricts water movement



SIZES	S, M, L, XL, XXL
-------	------------------



PG-WJ0125 WIND-BREAKER JACKET NEW

- 2.5mm neoprene jacket keeps the body warm in between or after dives.
- Taped edges stop the fabric from fraying
- Size chart please go to page 48 & 49



SIZES	XS, S, M, L, XL, XXL
-------	----------------------



PG-WP5 WATERSPORT PANTS NEW

- 2mm neoprene watersport pants.
- Helpful ankle zips help with donning and doffing.
- Protective printed knee pads.
- Drawstring fastener.
- Size chart please go page 48 & 49



SIZES	S, M, L, XL, XXL
-------	------------------



PG-WP7 WATERSPORT PANTS NEW

- Made from PURIGUARD antibacterial fabric.
- 3mm Nylon / Rotex neoprene multi-purpose pants.
- Ankle zips for easy donning and doffing.
- 2 large side 1680D Nylon pockets with D-rings for easy access and storage.
- Rotex fabric designed on hips for great durability for watersports activities.
- Protective Add-on Knee pads.
- Adjustable waist webbing w/ large D-ring and buckle.



SIZES	S, M, L, XL, XXL
-------	------------------



NEOPRENE GEAR

PG-WS826 NEW

3MM CAMO JUMPSUIT FOR HUNTING IN WARM WATERS

- 3mm high-grade neoprene
- Flat-lock stitching constructions
- Tough Rotex material on elbow and knee pads for more protection
- 5mm Chest gun-loading pad
- Size chart please go to page 48 & 49



SIZES S, M, L, XL, XXL



PG-WSK03 NEW 3MM KID'S SHORTY

- IST's stylish shorty for kids to wear for any warm water sports activity
- Super-Stretch material at armpits to maximize range of motion and prevent binding
- Flat-lock stitching constructions
- Size chart please go to page 69



SIZES XXS, XS, S, M, L, XL



PG-WSK80 NEW 3MM KID'S JUMPSUIT

- IST's full-length jumpsuits to keep kids warm and protected during temperate to cool water sports activities
- Super-Stretch material at armpits to maximize range of motion and prevent binding
- Zippers at wrists and ankles for easier donning and doffing.
- Flat-lock stitching constructions
- Size chart please go to page 69



SIZES XXS, XS, S, M, L, XL

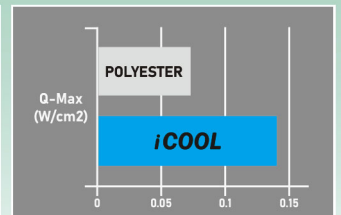
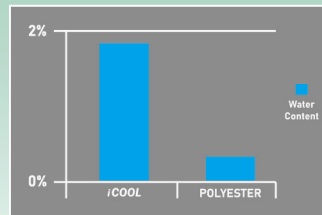


iCOOL NEW

IST latest antibacterial technology also provides cooling solution for advanced rash guard fabrics PURIGUARD / i-Cool fabrics. Adding mineral material and Zinc-embedded treatment which have better thermal balancing ability.

PURIGUARD + iCOOL

The body temperature can be easily balanced with outside environment, and water content increased by 450% and Q-Max increased by 180% compared to other yarn (polyester), which achieve the effect of rapid cooling & more comfortable sensation to human body.



PG-HOOD4 NEW HOODS UV protection 50+

Features include:

- Ultra comfortable tropical hood with collar
- Made from high quality spandex
- Flat-lock stitching
- UV protection applied



SIZES	XS	S	M	L
A	21cm	22cm	23cm	24cm
	8.2"	8.6"	9"	9.4"
B	36cm	37cm	38cm	39cm
	1'2.1"	1'2.5"	1'2.9"	1'3.3"



NEOPRENE GEAR

PG-DS46 SPANDEX RASH GUARD

IST's newest released PURIGUARD Spandex Rash Guard. iCool technology is also applied on the material which provides not only UV protection but a better experience for all kinds of activities.

- Excellent for any outdoor and water sports activities
- Easy care
- Stretch Spandex
- UV Protect 50+
- **iCool technology provides the perceived temperature 1~3°C lower than environment**



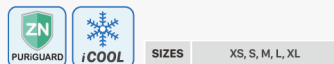
SIZES XXS, XS, S, M, L, XL, XXL



PG-DS66 SPANDEX RASH GUARD

IST's newest released PURIGUARD Spandex Rash Guard. iCool technology is also applied on the material which provides not only UV protection but a better experience for all kinds of activities.

- Excellent for any outdoor and water sports activities
- Easy care
- Stretch Spandex
- UV Protect 50+
- **iCool technology provides the perceived temperature 1~3°C lower than environment**
- Design for female
- Comfortable T-shirt style



SIZES XS, S, M, L, XL

	Weight (kg)	Height (cm)	Chest (cm)	Waist (cm)
XXS	40-50	145-152	78-84	65-68
XS	50-60	152-60	84-90	68-73
S	61-73	160-165	91-95	73-78
M	74-84	166-170	69-100	79-83
L	85-97	171-180	101-109	84-93
XL	98-106	181-185	110-115	94-99
XXL	107-116	186-190	116-119	100-105



PG-HD6 PROEAR HOOD

- Specially designed Pro Ear mask hood.
- Two layers of soft neoprene, 5mm in total.
- Special stretchable front panels allow for easy adjustment.
- Smoothskin face and ear seal to reduce.



SIZES S, M, L, XL, XXL

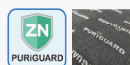


PG-HDN0130 (3MM)

PG-HDN0150 (5MM)

HOOD

- Blind stitch and tripled glued hood.
- Smooth skin face seal restricts water movement.
- The bib can be tucked under wetsuit collar to maintain warmth.
- Double-layered top panel with vent.



SIZES S, M, L, XL, XXL



HD9 BEANIE STYLE HOOD

- Comfortable 3mm super-stretch neoprene hood with taped edges.
- Protects the head from getting sun burnt during the time being at the surface or for other watersport activities.
- Provides divers with basic warmth retention and prevents hair entanglement with the mask strap.
- Chin strap with velcro closure.

SIZES S/M, M/L, L/XL



DH-2 DIVER'S HOLSTER

- Made from 3mm neoprene.
- Gives extra storage space to carry additional gear.
- Additional D-rings served as the extra attachment points.
- Adjustable Velcro closure.
- No. 10 rust-proof YKK zips.

SIZES S/M, L/XL, XXL



NEOPRENE GEAR

WSR50 3MM DIVING REVERSIBLE JUMPSUIT

- Optimized for use as rental gear.
- Reversible design with large size marks on both sides to simplify finding and sorting sizes in the dive shop.
- 3mm high-grade neoprene with double blind stitching.
- Super-stretch fabric at armpits for greater movements.
- YKK #5 zippers at ankles for easier donning and doffing.
- Size chart please go to page 48 & 49.
- **REVERSIBLE**

SIZES	MEN'S	S	M	L	XL	XXL
	WOMEN'S	5	7	9	11	13



GL-04 REEF GLOVES

- 2mm neoprene glove
- Amara palm constructions
- Thumb and forefinger area of the glove at right hand can be opened for photo shooting purpose

SIZES	XS, S, M, L, XL, XXL
-------	----------------------



S-900 TROPICAL GLOVES (2MM)

- 2mm glove with AMARA palm.
- Extra reinforcements on finger tips and palm.
- Soft neoprene for increased finger dexterity.

SIZES	XS, S, M, L, XL, XXL
-------	----------------------



NEOPRENE GEAR

S-326 (2.5MM)

- Stylish super-stretch neoprene gloves
- Extremely form fitting and comfortable

SIZES	XS/S, M/L, XL/XXL
-------	-------------------



S-780 (3MM)

- 3mm Kevlar-reinforced fabric lined glove
- Velcro closure

SIZES	S, M, L, XL, XXL
-------	------------------



S-680 (5MM)

- 5mm semi-dry Kevlar-reinforced fabric lined glove
- Double smooth skin semi-dry cuff restricts water movement
- Velcro closure

SIZES	XS, S, M, L, XL, XXL
-------	----------------------



S-660 (5MM)

- 5mm double glued blind stitching glove.
- Extra long design at wrist and cuff area for more seal to prevent water from entering.
- Anti-slip dots on palms and fingers.
- Velcro closure.

SIZES	S, M, L, XL, XXL
-------	------------------



NEOPRENE GEAR

SKB BEACH SOCKS

- Super-stretch Spandex upper with stretchy ankle rim.
- Tough neoprene sole with anti-slip traction dots protects feet from uneven and slippery surfaces.
- Shield feet from sunburn, biting insects, hot or cold surfaces, and friction burns or blisters when worn inside sandals or fins.

SIZES	XS	S	M	L	XL	XXL
CM	24	25	26	27	28	29
INCH	9.5	9.8	10.2	10.6	11	11.4



SK-2

- 3mm Neoprene socks with anti-skid dots on soles.
- Double glued & blind stitched.

SIZES	S	M	L	XL	XXL
CM	24	25	27	28	30
INCH	9.5	9.8	10.6	11	11.8



SK-3

- 3mm Neoprene socks with anti-skid dots on soles.
- Double glued & blind stitched.

SIZES	S	M	L	XL	XXL
CM	24	25	27	28	30
INCH	9.5	9.8	10.6	11	11.8



SK-9

- 3mm ultra high-grade neoprene lined with smooth skin outside.
- Design to be worn with freediving fins to make you to fit the foot pocket more to reduce unnecessary effort to be put in kicking.
- Blind-stitching technology sealed with rubber glue to block the water outside.
- Boat socks design to make your legs look longer with elegance lines.
- Anti-slip dots at soles.

SIZES	XS	S	M	L	XL
US	4-6	6-8	8-10	10-12	13
EURO	34-38	38-41	41-44	44-47	48
CM	22-24	24-26	26-28	28-30	31
INCH	8.7-9.5	9.5-10.2	10.2-11	11-11.8	12



NEOPRENE GEAR

S65 5MM SNEAKER SOLE **TITANIUM** **NEW**

- The IST New Diving Boots S65 is designed comfortable, durable with a great grip sneaker sole. For years experience, we design different patterns on different area to provide the most grip friction. Considering the environment of diving activities, soft but durable rubber sole makes divers comfort and protection.
- 5mm Titanium NYLON II boots with sneaker sole.
 - Double-guled and blind-stitched construction.
 - Heel and Toe caps for durability and extra protection.
 - No. 10 Ultra durable YKK zip.
 - Built-in fin strap keeper.

SIZES	#4 - #13
-------	----------



- Vertical / Horizontal lines and cuts for more flexible movements.
- The Yellow lines mark off in the middle, its drainage groove keeps as less water as possible
- Drain lines extend to all over round.

- Front Toe and heel area with thinner horizontal lines makes water drain easily.
- Same design as tires to provide necessary grip.

- The Sawtooth pattern brings the most friction.
- Rough and thick zigzag protect the weak points of the sole.



- The fine dots in arch for more comfortable wear

SIZES	3XS	XXS	XS	S	M	M/L	L	XL	XXL	3XL
US	4	5	6	7	8	9	10	11	12	13
Euro	34/35	36	37/38	39	40/41	42	43/44	45	46/47	48
cm	22	23	24	25	26	27	28	29	30	31

NEOPRENE GEAR

S38 LOW CUT BOOT

- Versatile 3mm tropical boots.
- Glued and blind stitched seam to minimize water flow.
- Vulcanized sole.
- Size chart please go to page 58.

SIZES #4- #13



BT0430 LOW CUT BOOT

- Optimized for use as rental gear.
- Large size marks on uppers to simplify finding and sorting sizes in the dive shop.
- 3mm neoprene sandwiched between high quality, stretchy nylon fabric.
- Flat-lock stitched upper seams to prevent skin irritation.
- Tough, vulcanized rubber sole.
- Iocap and heel cap for greater protection and durability.
- Elastic fabric at ankles for easier donning and doffing.
- Size chart please go to page 58.

SIZES #4- #13



S7 (5MM) S7/6.5 (6.5MM) TITANIUM

- Titanium and spandex lined boots.
- All boots double-glued and blind-stitched.
- Excellent for cold water diving.
- Vulcanized rubber sole.
- Toe and heel caps for additional support and protection.
- Built-in fin strap keeper.
- No.10 ultra durable YKK zip.
- Size chart please go to page 58.

SIZES #4- #13



NEOPRENE GEAR

B400

- Tall-cut boots with 10mm (0.4") thick felt sole.
- Great for walking on slippery coastal reefs.
- 3mm nylon II neoprene upper.
- Toe and the heel caps can provide extra foot protection.
- No.10 YKK zipper.
- Size chart please go to page 58.

SIZES #4- #13



S19

- 5mm nylon II boots.
- Vulcanized rubber sole with additional heel cap for protection and durability.
- Built in fin strap keeper.
- No.10 ultra durable YKK zipper.
- Size chart please go to page 58.

SIZES #4- #13



BT0130

- 3mm nylon II boots.
- Molded sole with heel and toe caps for protection and durability
- #10 YKK zip.
- Built-in fin strap keeper.
- Blind-stitched construction.
- Additional pull tab helps donning and doffing.
- Size chart please go to page 58.

SIZES #4- #12



NEOPRENE GEAR

H-3 STAINLESS STEEL WETSUIT HANGER

- Flexible arms which can be shaped for suit hanging.
- Padded contact surface to prevent creasing and marking while hanging.
- Hook can be disassembled to save storage space.



H-6 MULTI-PURPOSE HANGER

- A versatile hanger which can be used to hang equipment such as BCD, regulator, gloves and boots.



H-7 DRY SUIT HANGER

- 2-in-1 hanger for post-dive dry suit and regulator drying
- Lightweight structure yet ultra strong in strength.
- Built-in dummy cylinder valve for easy regulator attachment (DIN / Yoke compatible).
- Can be disassembled to save storage space.



NC1-SET

NEOPRENE SUIT REPAIR GLUE SET

- 30ml x 2
- Comes in 1 transparent glue and 1 black glue for different colors of products



NC1

NEOPRENE SUIT REPAIR GLUE

- Each tube contains 30ml



NCL-1

WETSUIT CLEANER

- 250ml(8.5oz)
- Chlorine remover formula included
- Designed for all kinds of Neoprene product



NCL-2

NEOPRENE CLEANER & ODOR

- High performance formulation to remove and prevent unpleasant odor. Specialized for neoprene gears include wetsuits, dry suits, gloves, & boots. Environmental friendly ingredients. Safely inhibits the smelly funk & Revive your neoprene gears easily!
- 60ml(2oz)



CV-01 2-IN-1 WIND COAT

- Lightweight wind breaker coat with attachable 2mm neoprene vest
- Excellent for in-between dives on boat
- Vest
- 2mm ultra high-grade neoprene with front zip
- Super-Stretch material at waist
- Coat: made from super lightweight water repellent fabric which can be worn individually or with vest attached

SIZES XS, S, M, L, XL, XXL



Hat



Attachable 2mm Neoprene Vest



Storage Pocket



Water Repellent Fabric

NEOPRENE GEAR

CAP-16 NEW

- Multi function Outdoor Sun Hat.
- **Breathable fabric with wide brim.**
- **Quick dry** and Waterproof materials for diving without hassle.



Changing different style for multi-situation



BK

CAMO

F/GY

CAP-7 IST BASEBALL CAP

One size fits all adult cap with embroidered logo at the front and international and European dive flag at the back.



CAP-9 IST FISHING CAP

Adult cap with removable sun blocking screen at the back.



BE-203 T-SHIRT

SIZES XS, S, M, L, XL, XXL



BK

W

WATERSPORTS GEAR

LJ-500 ADULT SNORKELING VEST NEW

- 210D Nylon with TPU coating
- Easy Oral inflation
- **SOLAS** reflective tape
- Crotch strap with buckle

SIZES	LJ500-M
Weight	50-80kg/ 110-176lb
Height	150-175cm/ 4'11"~5'9"
Buoyancy	@84.5N (8.6kgf/ 19lbf)

SIZES	LJ500-L
Weight	80-130kg/ 176-286lb
Height	175-190cm/ 5'9"~6'3"
Buoyancy	@102N (10.4kgf/ 23lbf)



SOLAS



LJ-600 KID'S SNORKELING VEST NEW

- 210D Nylon with TPU coating
- Easy Oral inflation
- **SOLAS** reflective tape
- Crotch strap with buckle

SIZES	LJ600
Weight	20-50kg/ 44-110lb
Height	120-150cm/ 3'11"~4'11"
Buoyancy	@53.4N (5.44kgf/ 12lbf)



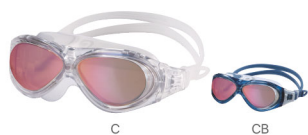
SOLAS



WATERSPORTS GEAR

G-36 SWIMMING GOGGLE

- Wrap round water sport goggle
- Comfortable silicone skirt provides watertight seal
- Large skirt area reduces pressure around eye socket



G-39 SWIMMING GOGGLE

- Wrap round water sport goggle
- Comfortable silicone skirt provides watertight seal



G-40 OPTICAL SWIMMING GOGGLE

- The G40 RX Goggle With UV Protection.
- We answered the need early-on for supplying high-quality prescription lens swimming goggle, including providing customers with the easy-to-use, exclusive and innovative Prescription Lenses Calculator.

Features

- The lenses are made of strong impact resistant polycarbonate resin. In addition, the lenses block out harmful ultraviolet rays.
- The long lasting anti-fog system prevents fogging under all conditions.
- Available diopter from
-1.0 to -6.0 (by 0.5)
-7.0 to -10.0 (by 1.0)
+1.0 to +8.0 (by 1.0)
- Left / Right lenses are interchangeable.



SC-6 SPANDEX SWIMMING CAP

- Made from high grade spandex material



SC-7 SWIMMING CAP

- Made from silicone complex material with spandex inside



MJ-111 Lino

- Single lens mask with tempered glass for kids
- Hypoallergenic silicone mask skirt and strap for ultra comfortable
- Fits wide range of facial profile



M-59 TWINGO

- Comfortable twin lens mask with a skirt that is able to accept a great range of facial profiles.
- Hypoallergenic mask skirt and strap.
- Swivel buckles add to comfort while wearing.



M-71 LYRA

- Kid's single lens mask with tempered glass, silicone skirt and strap.
- Swivel buckles that changes angle to accommodate various facial profiles.



YOUTH GEAR

SNK-205

- Dry snorkel for kids with silicone tube and mouthpiece
- Equipped with purge valve to channel water out of the snorkel
- Smooth air passage and easy breathing



SNK-8

- Junior snorkel with splash guard and purge
- Small hypoallergenic silicone mouthpiece for children



SN-18

- Perennial best selling snorkel.
- Hypoallergenic liquid silicone mouthpiece.
- Easy to adjust snorkel holder.
- Purge valve for easy water clearance.



YOUTH GEAR

FK-09 SWIFT

- Stylish kids' open heel fins.

SIZES	L/XL
US	3-5
EURO	34-38



F-36 VELOX

- Balanced blade and comfortable foot pocket
- Open toe box for quick drainage
- Sizes 3XS to M for Color of Pink & White

SIZES	3XS	XXS	XS	S	M	L	XL
US	1-2	3-4	4-6	6-7	8-9	9-10	11-13
EURO	33-34	35-36	37-38	39-40	41-42	43-44	45-47



F-12 SEA DIVER

- Durable and comfortable rubber fins.

SIZES	4XS	3XS	XXS
US	10-12	12-1	1-3
EURO	30-32	32-34	34-36



YOUTH GEAR

PG-WSK03

3MM KID'S SHORTY **NEW**

- IST's stylish shorty for kids to wear for any warm water sports activity.
- Super-Stretch material at armpits to maximize range of motion and prevent binding.
- Flat-lock stitching constructions.



SIZES XXS, XS, S, M, L, XL

- Colors: ● B ● HP ● NY



PG-WSK80

3MM KID'S JUMPSUIT **NEW**

- IST's full-length jumpsuits to keep kids warm and protected during temperate to cool water sports activities.
- Super-Stretch material at armpits to maximize range of motion and prevent binding.
- Zippers at wrists and ankles for easier donning and doffing.
- Flat-lock stitching constructions.



SIZES XXS, XS, S, M, L, XL

- Colors: ● B ● HP ● NY



Kid's Dive Suit Sizes Chart

SIZES	XXS	XS	S	M	L	XL
Height	3'3" / 99cm	3'6" / 109cm	3'11" / 119cm	4'3" / 129cm	4'7" / 139 cm	5' / 152 cm
Chest	1'11" / 59cm	2'2" / 64cm	2'4" / 70.5cm	2'5" / 74.5cm	2'6" / 78.5cm	2'7" / 82 cm
Waist	1'4" / 42cm	1'6" / 48cm	1'8" / 53cm	1'10" / 56cm	1'11" / 59cm	2' / 62 cm

S-38J

- Versatile 3mm kid's tropical booties.
- Vulcanized sole for better grip in wet conditions.

SIZES	1	2	3
EURO	30	31/32	33
CM	18.5	19.2	21



SK-3J 3MM NEOPRENE SOCKS

- 3mm short-cut neoprene socks
- Blind stitching constructions

SIZES	S	M	L	XL
LENGTH	20cm	21cm	22cm	23cm
HEIGHT	11.5cm	12cm	12.5cm	13cm



YOUTH GEAR

CS-71088

M-71 + SNK-8 + CS8



CS-59188

M-59 + SN-18 + CS8



CFJ-02

MJ111 + SNK-205 + FK09 + CS8-L

SIZES	L/XL
US	3-5
EURO	34-38



YOUTH GEAR

CF-710809

M-71 + SNK-8 + FK-09 + CS8-L

SIZES	L/XL
US	3-5
EURO	34-38



CFK-590809

M59 + SNK-8 + FK09 + CS8-L

SIZES	L/XL
US	3-5
EURO	34-38



FREE DIVING GEAR

MP-203 HUNTER

- Extremely low volume design.
- Swivel and easy-adjust buckles.
- Ideal for hunters and photographers.
- The highest grade silicone available for a soft comfortable seal.
- Perfect as a spearfishing, free diving or back-up mask as it folds and fits easily in your BCD pocket.
- Tempered glass for safety and durability.
- Non-polish finished mask skirt prevents from reflecting of sunlight.



FREE DIVING GEAR

M-88 BLUETECH

The bendable buckles are attached to the stretchy hypoallergenic silicone skirt so they will not interfere with fitting and this feature enables the mask to be packed into tight luggage space while preparing for a trip.



GS-07

MP-208

ATUM



BS



W

M14-BSM VEGA MASK WITH TINTED LENS



FREE DIVING GEAR

MP-201 PROTEUS

- Comes with tinted lenses to enhance underwater colors
- Metal-Like painting technology for more colors of choice
- Super low volume design makes this mask become the best choice for free diving
- Anti-fog lens available.



CB



BS



BSM-BK/Y
Grey lens with mirror reflection



BSM-SV/R
Blue lens with orange reflection



W/PR



BSM-BK

FREE DIVING GEAR

SN-36 FREEDIVING SILICONE SNORKEL

- Simple silicone snorkel which can be bent and stored in BCD pocket when not in use.



SN-301

- Non-purge snorkel with a stout snorkel holder.
- The silicone mouthpiece provides significant comfort which can decrease the level of jaw fatigue.



SN-7

- Silicone mouthpiece



FREE DIVING GEAR

FRA-01/C FATHOM BLUE

Incorporating all the features of Fathom Blue, its directional carbon blade ensures the unheard-of thrust that only composite fibers can deliver. Its interchangeable blade is very reactive, and purpose-built for advanced free diving and spearfishing. Carbon design provides maximum propulsion through the leg-kick, and optimum return of the blade.



- Blade: 22cm x 60cm (8.7" x 23.6")
- Overall length: 91cm (35.8") (Size: M/L)

Weight:	
XXS/XS	1.8kg (4lb)
XS/S	1.9kg (4.2lb)
S/M	2kg (4.4lb)
M/L	2.1kg (4.6lb)
L/XL	2.2kg (4.9lb)

- Stiffness: Medium



The fin can be taken apart should the need to change blade arises.



The blade gives maximum propulsion and best efficiency.

Size Chart	Fin Sizes	XXS/XS	XS/S	S/M	M/L	L/XL
Barefoot	US	4-5	6-7	8-9	10-11	12-13
	EURO	36-38	38-40	41-42	43-44	45-46
Worn with socks	3mm US		5	7	9	11
	EURO		38	40	42	44
	5mm US		4	6	8	10
	EURO		37	39	41	43
	7mm US		5	7	9	
	EURO		38	40	42	

FREE DIVING GEAR

FRA-01/F FRA-01 APNEA DIVING FINS

FATHOM BLUE

FRA-01 Apnea Diving Fins
Fathom Blue is a purpose-built apnea diving fin (free diving / spear fishing). The comfortable foot pocket and powerful blade provide efficient thrust and unparalleled underwater maneuverability. Although more expensive, rubber is our chosen material to make Fathom Blue's foot pocket. We were able to strategically build a rubber foot pocket with multiple flexibility while fins made from various plastic compounds do not share the same advantage. This means Fathom Blue's foot pocket is able to produce a spring-like effect when finning, yet its base (sole) is rigid and efficient.

- Specification**
- Blade Dimension(H x W) 22cm x 60cm (8.7" x 23.6")
 - Over Length(Size: L/XL) 92cm(36")
 - Weight:

XXS/XS	1.9kg (4.2lb)
XS/S	2kg (4.4lb)
S/M	2.1kg (4.6lb)
M/L	2.2kg (4.9lb)
L/XL	2.3kg (5lb)

- Size chart please go to page 82



The fin can be taken apart should the need to change blade arises.



The blade gives maximum propulsion and best efficiency.

F26 Blitz

- Blitz is a purposely-designed spearfishing and free-diving fin with special Tri-material construction technology:
- Comfortable and soft thermo rubber foot pocket.
 - High density TPR perimeter reinforcement provides the connection and strength needed between the blade and foot pocket.
 - The extra long but flexible blade gives spring-like feel and ultra quick acceleration and excellent reaction time.
 - The rib-like structures found on the side and blade surface are hydro-dynamic. They channel water directly backwards and give full purchase of thrust while keeping energy loss at a minimum level.

SIZES	M	L	XL
US	8-9	10-11	12-13
EURO	42-43	44-45	46-47



FREE DIVING GEAR

WSH-03
2MM 2-PIECE FREE DIVING NEOSKIN WETSUIT

- Made from high-grade 2mm Neoskin-lined neoprene with nylon fabric inside
- 2-piece wetsuits with tops and pants
- Super-Stretch material at armpits area for easier movement
- Beaver tail with Velcro system for both easy adjustment and comfortable
- Flat-lock stitch constructions
- Size chart please go to page 48 & 49



SIZES	MEN	S	M	L	XL	XXL
WOMAN	5	7	9	11	13	



WS-36
2MM FEMALE FREEDIVING SPRINGSUIT

- Made from the highest-grade neoprene with Neoskin lined outside.
- YKK#10 front zip for easy donning and doffing.
- Flat-lock stitching technology.



Female	Size	#3	#5	#7	#9
Chest	Inches	29.1 - 31.1	31.5 - 33.5	32.7 - 34.6	34.3 - 36.2
	CM	74 - 79	80 - 85	83 - 88	87 - 92
Waist	Inches	22 - 24	24 - 26	25.2 - 27.2	26.8 - 28.7
	CM	56 - 61	61 - 66	64 - 69	68 - 73
Hip	Inches	32.3 - 33.9	34.3 - 36.2	36.6 - 38.6	38.2 - 40.2
	CM	82 - 86	87 - 92	93 - 98	97 - 102

FREE DIVING GEAR

PG-WS826

3MM CAMO JUMPSUIT FOR HUNTING IN WARM WATERS **NEW!**

- 3mm high-grade nylon II neoprene
- Flat-lock stitching constructions
- Tough Rotex material on elbow and knee pads for more protection
- 5mm Chest gun-loading pad
- Size chart please go to page 48 & 49



SIZES S, M, L, XL, XXL



WSH-04

5MM 2-PIECE CAMO WETSUIT

- Made from high-grade 5mm neoprene with open cell inside
- 2-piece wetsuits with tops and pants
- Beaver tail with heavy duty POM buckles
- Blind-stitch constructions
- Tough Rotex elbow and knee pads
- 5mm chest gun loading pad
- Smooth skin seal at wrists and ankles
- Size chart please go to page 48 & 49

SIZES S, M, L, XL, XXL



FREE DIVING GEAR

VSA-0240 APNEA WEIGHT VEST

- 4mm high-grade neoprene vest with 8 weight pockets and each pocket takes up to 2KG (4.4lb) weight.
- 1.5" webbings at both shoulders and waist for easy adjustment.
- Size chart please go to page 48 & 49.

SIZES M, L, XL



10/BY

BK



PG-VSH100-10

CAMOUFLAGE HOODED SUITS

- Spandex material with high grade neoprene at front torso
- Flat-lock stitching.
- Foamed chest pad for spear gun loading.
- Designed to be worn over a wetsuit or alone.
- Size chart please go to page 48 & 49.



SIZES S, M, L, XL, XXL



B

GN

10/BY



FREE DIVING GEAR

CAP-16 NEW

- Multi function Outdoor Sun Hat.
- **Breathable fabric with wide brim.**
- **Quick dry** and Waterproof materials for diving without hassle.



Changing different style for multi-situation



BK

CAMO

F/GY

S-926 (2MM)

- 2mm camouflage spear fishing glove with AMARA palm
- Extra reinforcements on finger tips and palm
- Soft neoprene for increased finger dexterity

SIZES S, M, L, XL, XXL



10/BY

S-326 (2.5MM)

- Stylish super-stretch neoprene gloves.
- Extremely form fitting and comfortable.
- Anti-slip dots on palm and fingers for better underwater grip.
- Available in 3 sizes.

SIZES XS/S, M/L, XL/XXL



SK-9

- 3mm ultra high-grade neoprene lined with smooth skin outside.
- Design to be worn with freediving fins to make you to fit the foot pocket more to reduce unnecessary effort to be put in kicking.
- Blind-stitching technology sealed with rubber glue to block the water outside.
- Boat socks design to make your legs look longer with elegance lines.
- Anti-slip dots at soles.

SIZES	XS	S	M	L	XL
US	4-6	6-8	8-10	10-12	13
EUR	34-38	38-41	41-44	44-47	48
CM	22-24	24-26	26-28	28-30	31
INCH	8.7-9.5	9.5-10.2	10.2-11	11-11.8	12



Open cell
(Prevent the sock from falling off)



Inside the sock



FREE DIVING GEAR

FD-BUOY/E FREEDIVING BUOY NEW

- 15" inner diameter freediving buoy made from heavy duty 600D PU coated polyester fabric for outer shell; ultra high-grade rubber for inner tire.
- **A flag seat located on top of the buoy for dive flag if needed.**
- 6 handles located around the buoy allows several divers to use at the same time; **2 extra handles on top.**
- 2 stainless steel D-ring at sides of the buoy for connecting with other buoys if necessary.
- 2 YKK #10 zips at front cover for easy operation and also prevent stuffs from falling out.
- **Double mesh bag inside for storage personal item.**
- 4 stainless steel grommets at bottom to drain water.
- 2 stainless steel D-ring are fixed at bottom with extra durable 2" polyester webbing for divers to connect weight and rope; max. dry weight loading 300KG (660lbs).
- Comes with a tire inflation adapter can be connected to a BC hose.



Double mesh bag for storage personal item



2 shoulder straps designed for easy carrying



Comfortable hand grip



D-ring for rope storage

FREE DIVING GEAR

POLE SPEARS

IST Sports pole spears are light, durable and easy to use with various options available 2 different breakdown styles (2-piece or 3-piece) as well as 2 different tips (3-prong or 5-prong barbed paralyzer) – to choose from. These spears can be used fully assembled or with the tip attached directly to the rubber slinged bottom segment to create shorter length to suit different hunting environments and targets.

CHSA-001/3



Item (5-prong tip)	CHSA001	CHSA002
Item (3-prong tip)	CHSA001/3	CHSA002/3
Shaft material	Aluminum	Aluminum
Total length	201cm(6'7")	200cm(6'7")
Segment Lengths	85cm + 101cm (2'9"+3'4")	50cm + 65cm + 70cm (1'8"+2'2"+2'4")
No. of segments	2	3

CHSA-002/3



CHSAP-5B

5 prong stainless paralyzer tip for aluminum pole spear.

LENGTH	15cm (6')
--------	-----------



CHSAP-3B

3 prong stainless paralyzer tip for aluminum pole spear.

LENGTH	15cm (6')
--------	-----------



CHSAP-1B

Single barb stainless paralyzer tip for aluminum pole spear.

LENGTH	15cm (6')
--------	-----------



CHSJ-01

Pole spear tip adapter.
Thread from 14mm x 2mm to 6mm x 1 mm.



CHSR-01

- Overall length: 105 cm(41")
- Latex tube lengths: 75 cm(29.5")
- Latex tube OD: 0.94 cm(0.37")
- Replacement pole spear latex rubber sling.



CHS-BAG

- Durable nylon material.
- Designed in 2 sizes for CHSA-001 & CHSA-002.
- Foldable bag easy to storage and carry.



FREE DIVING GEAR

BG-04 FREE DIVING BACKPACK

- Constructed with heavy duty 600D PU coated polyester.
- This small backpack with a dimension of 33cm x 36cm x 47cm (13" x 14.2" x 18.5") yet it is still roomy enough for all of your spearfishing gears.
- 2 front pockets for keys, phones, and wallets.
- Bungee cord at side helps to fix the spear guns.

DIMENSION	33cm x 36cm x 47cm (13" x 14.2" x 18.5")
-----------	--



BGM-05 MESH BAG WITH HANDLE

- Heavy duty 420D nylon and lasting mesh bottom allows for fast drainage.
- Stainless steel made handle with clip provides convenience, quick and easy access to the interior.

DIMENSION	90cm x 60cm (35.4" x 23.6")
-----------	-----------------------------



WB15-1.3M (4'3")

WB15-1.5M (5')

RUBBER WEIGHT BELT

- Rubber belt is stretchy and self-adjust to changes in wetsuit's thickness at different depths.
- Sturdy stainless steel buckle.



SBA-1 FLOAT

- Excellent trailing float for spearfishing.
- Provides attachment points for sigh stringers, D-rings and snap hooks.
- 10m (30") of high visibility PE line with stainless steel clips.
- Oral inflator.
- Alpha flags are available

DIMENSION	85cm x 25cm (33.5" x 9.8")
-----------	----------------------------



K-21 STAINLESS STEEL KNIFE

- 11cm(4.3") long 420 grade stainless steel pointed-tip blade.
- Serrated edge with line cutting groove.
- Rubber knife straps are included.
- Designed for spearfishing purpose.



RENTAL GEAR

IST understands each rental is an opportunity to establish a loyal customer relationship, and we present the IST Rental Collection with that goal in mind.

DELTA

J-1900/E NEW

- Features include:
- **33lbf(147N) back inflated bladder**
 - Stainless steel D-rings, 2 on Shoulder, and 2 on waist Harness
 - **Reshaped and upgraded bladder provides better control of buoyancy and keeps divers at vertical position at the surface**
 - K style power inflator with pull dump
 - 16" Military grade corrugated rubber inflation hose
 - 2 quick-release weight pockets; Max. load 4kg(8.8lb) each
 - **ONE SIZE FITS MOST**
- CE APPROVED



BK

Hope

J-800-1000D

- Features include:
- Simple yet traditional jacket style BCD
 - Tough 1000D cordura.
 - Cold water capable power inflator with pull dump.
 - 2 additional rear quick air dump valve.
 - Adjustable sternum strap.
 - Strong and lightweight delrin D-rings.
 - 2 roomy side pockets with Velcro closure
 - Padded backpack.
- CE APPROVED



SIZES	Buoyancy	Chest(cm/inch)	Waist (cm/inch)
XXS	70N(6.8kgf/15lbf)	66-91/26"-36"	64-81/25"-32"
XS	120N(11.8kgf/26lbf)	66-91/26"-36"	64-81/25"-32"
S	140N(14.1kgf/31lbf)	76-102/30"-40"	74-91/29"-36"
M	170N(17.2kgf/38lbf)	87-112/34"-44"	84-102/33"-40"
L	220N(22.2kgf/49lbf)	97-122/38"-48"	94-112/37"-44"
XL	270N(27.2kgf/60lbf)	102-127/40"-50"	104-122/41"-48"

RENTAL GEAR

R-750
FLOW-THROUGH PISTON REGULATOR



O-50
NON-ADJUSTABLE OCTOPUS



GP-9200
TRIPLE GAUGE CONSOLE



MP-111 Scope



T

M-9 SATURN

- OL4
- Optical lenses are available in diopter from -1.0 to -8.0 in -0.5 decrement
 - Left / Right lenses are NOT interchangeable.



BS/NY

RENTAL GEAR

M-55 CORONA

OL55/OL55M

- Optical lenses are available in
-1.0 to -8.0 in -0.5 decrement (also for tinted lens)
+1.0 to +4.0 in +0.5 increment (not available for tinted lens)
- Left / Right or tinted optical lenses are interchangeable.
- Anti-fog lens available.

OL55/S

- Optical lens stickers at the bottom of the lens for ME55 and M-55 masks. Available in diopter from +1.0 to +4.0 in 0.5 increment.
- Left / Right lenses are NOT interchangeable.



BS/CH **NEW**
The latest chrome plating technology gives Corona mask a refreshing outlook

SN-103



BS/NY BS/GN BS/HP



CB

SN-7

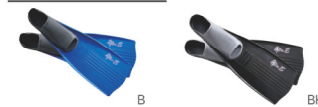


BS B NY



BK

F-20 SUPER S



B BK

SIZES	XXS	XS	S	M	L	XL	XXL
US	1-3	3-5	5-7	7-9	9-11	11-13	13-15
EURO	34-36	36-38	38-40	40-42	42-44	44-46	46-48



NY

RENTAL GEAR

PG-WSR10 3MM NEOPRENE SHORTY **NEW**

- 3mm Neoprene Shorty
- Optimized for use as rental gear.
- Large size marks on legs simplify finding and sorting sizes in the dive shop.
- Tough Rotex fabric at hips for greater durability; super-stretch fabric at armpits for greater movements.
- 3mm high-grade neoprene with flat-lock stitching.
- YKK #10 front zip for easier donning and doffing.
- Size chart please go to page 48 & 49.



SIZES	MEN'S	S	M	L	XL	XXL
WOMEN'S	5	7	9	11	13	



Tough Rotex fabric at hips for greater durability.



SV (Men)

P (Woman)

WSR50 3MM DIVING REVERSIBLE JUMPSUIT

- Optimized for use as rental gear.
- Reversible design with large size marks on both sides to simplify finding and sorting sizes in the dive shop.
- 3mm high-grade neoprene with double blind stitching.
- Super stretch fabric at armpits for greater movements.
- YKK #5 zippers at ankles for easier donning and doffing.
- Size chart please go to page 48 & 49.
- REVERSIBLE

SIZES	MEN'S	S	M	L	XL	XXL
WOMEN'S	5	7	9	11	13	



Reversed

SV (Men)

P (Woman)

BT0430 LOW CUT BOOT

- Optimized for use as rental gear.
- Large size marks on uppers to simplify finding and sorting sizes in the dive shop.
- 3mm neoprene sandwiched between high quality, stretchy nylon fabric.
- Flat-lock stitched upper seams to prevent skin irritation.
- Tough, vulcanized rubber sole.
- Toecap and heel cap for greater protection and durability.
- Elastic fabric at ankles for easier donning and doffing.
- Size chart please go to page 58.

SIZES	#4- #13
-------	---------





HUKA diving can be compared to a form of advanced snorkeling; it is an excellent step between snorkeling and scuba diving, with all the fun of both. There is lots of potential in HUKA. Many people are more inclined to give it a try — there are no classes or certification needed, it's perceived as less "dangerous" and requires less gear. There is no Master Diver needed, just a HUKA guide and it's also safer with a 20 ft. deep maximum. Moreover, the minimum age for HUKA diving is only 8 years old, and parents are much more inclined to having their kids partake in a safe HUKA dive! Compared to scuba diving, HUKA diving is highly accessible.



FLOTATION DEVICE (HUKA-FD)
Let the canoe carry heavy tank for you!



WEIGHT BELT (WB-10) AND
WEIGHT POCKET (JT-WP8)



FRONT BACK
HAVE FUN WITH SAFETY
(HUKA-VSN0150)

Special design to keep the air stick with you!

HUKA-1 INCLUDES 1 ~ 11, 12-1 HUKA-2 INCLUDES 1 ~ 11, 12-2

1.	Floatation Device w/ Flag & Inflator 125 x 85 x 20 cm (48.5"x 34"x 8")	x 1 pc	9.	WB-10	x 2 pcs
2.	Huka-R8	x 1 pc	10.	HUKA-VSN0150 Size: S, M, L, XL	x 2 pcs
3.	Huka-O60	x 2 pcs	11.	LP-BC	x 1 pc
4.	Huka-GP15 (w/o hose)	x 1 pc	12-1	Huka-LP/12ft (3.6M) for HUKA-1	x 2
5.	Huka-LP/5ft (1.5M)	x 2 pcs	12-2	Huka-LP/22ft (6.6M) for HUKA-2	x 2
6.	Huka-HP/5ft (1.5M)	x 1 pc			
7.	ON1-L/NY	x 2 pcs			
8.	JT-WP8	x 8 pcs			

TECHNICAL GEAR

Side Mount BCD & Component

These side mount bladders are the result of hundreds of side mount dives in real world conditions by experienced side mount divers and cave explorers. IST's SMBs are the lowest profile; streamlined buoyancy devices, which provide maximum balance and ideal, trim control. With IST's bladders, you move through the water easier and more efficiently. The minimalist harnesses also give more chest room for easier access to attachments and better maneuverability underwater. The SMB-21/N and SMB-42/N are constructed of armor-like 1680 Denier Nylon with a coating of TPU fully shielding them from abrasions, tears or punctures.

SMB-21/N
21 LBS OF LIFT SIDE MOUNT BLADDER



SMB-42/N
42 LBS OF LIFT SIDE MOUNT BLADDER



TECHNICAL GEAR

SMB-POUCH SIDE MOUNT BACK POUCH

- Heavy duty 1680D TPU coated nylon fabric
- Comes with 2 stainless steel double-ended clips for side mount divers
- Designed for one-handed operation
- Simple, roomy, and durable

DIMENSION 25cm x 17cm x 5cm (9.8" x 6.7" x 2")



SMB-BUNGEE/W
BUNGEE CORDS FOR SMB

Overall Length: 70cm (30.3")



SMB-BUNGEE/S
BUNGEE CORDS FOR SMB

Overall Length: 41.5cm (16.3")



SMB-BUNGEE/N
BUNGEE CORDS FOR SMB

Overall Length: 55cm (21.6")



SMB-BUNGEE/L

Overall Length: 65cm (25.6")



SMB42/N-SHELL



SMB42/N-BLADDER



TECHNICAL GEAR

SMB-21-BLADDER/N

BLADDER FOR SMB-21N



SBR-2 (FOR TANK 7"-7.25")

SBR2-1 (FOR TANK 5.25")
STAGE BOTTLE RIGGINGS



SMB21-CS/N SMB42-CS

ADJUSTABLE CROTCH
STRAP SYSTEM



SMB-HB

HARNESS SYSTEM
FOR SMB-42/N



SMB-HB/N

HARNESS SYSTEM
FOR SMB-21/N



SMB-PLATE

BACK PLATE WITH RAILS
(COMES WITH SCREW SET)



SMB-SS

CHEST STRAPS FOR SMB



IF-SMB16/N

K INFLATOR WITH 16" HOSE FOR SMB



DR-8

COMBINATION OF WEBBING
KEEPER AND D-RING



TECHNICAL GEAR

Tech BCD Components

JT-65 ▲ EXP

DOUBLE BLADDER TWIN-TANK AIR CELL (65LBF)

This is Dolphin Tech's flagship air cell and it is packed with abundant features. It has perimeter bungee cords which compress the air cell to maintain a hydrodynamic profile when not fully inflated. The outer shell is extremely tough and wear-resistant and gives the best protection under the most testing conditions. There are 3 sets of marine-grade steel grommets allowing the fine-tuning of tank-BCD-diver positioning. Convenience in buoyancy control is provided through carefully positioned pull dumps.

- Style: Horseshoe
- Buoyancy capacity: 65lbf (29.5kgf)
- Primary bladder material: 210D TPU coated nylon
- Redundant bladder material: 210D TPU coated nylon
- Shell material: 1680D PU coated ballistic nylon with bungee cord
- Primary inflator type: 16" (40.6cm) tech elbow
- Redundant inflator type: 19" (48.2cm) tech elbow
- No. of primary automatic pressure relieve valve / pull dump: 2 (at left waist & right shoulder, torso side)
- No. of redundant automatic pressure relieve valve / pull dump: 2 (at right waist & left shoulder, tank side)
- Mounting grommets distance (C-C): 3 sets in total, 11" (27.9 cm) apart for each
- Primary and redundant low pressure BC hoses included
- For twin back mounted tank only (twin 100cuft / 15L internal volume)



TECHNICAL GEAR

JT-50 ▲ SINGLE BLADDER SINGLE-TANK AIR CELL (50LBF)

The air cell's protective shell has a special 3-dimensional cutting, which promotes streamlining without sacrificing lift. It is constructed from tear resistant material and a durable anti-corrosion zip encloses the replaceable inner air cell. There are 2 drainage holes in the bottom of the shell for water trapped to escape when exiting the dive. The circular, doughnut design eliminates gas trapping thus providing technical divers with precise buoyancy control any time during a dive mission.

- Style: Circular doughnut
- Buoyancy capacity: 50lbf (22.7kgf)
- Bladder material: 420D TPU coated nylon
- Shell material: 1680D PU coated ballistic nylon
- Inflator type: 16" (40.6cm) tech elbow
- No. of automatic pressure relieve valve / pull dump: 1 (at left waist side)
- Mounting grommets distance (C-C): 11" (27.9cm)
- Low pressure BC hose included
- For twin back mounted tanks only (twin 100cuft / 15L internal volume)
- Low pressure BC hose included.



JT-30 ▲ SINGLE BLADDER SINGLE-TANK AIR CELL (30LBF)
JT-40 ▲ SINGLE BLADDER SINGLE-TANK AIR CELL (40LBF)

It is designed for single tank use. The air cell is extremely streamlined and its frontal width (as the diver assumes swimming position) is barely wider than an average person's shoulders. Low pressure BC hose included.

- Style: Circular doughnut
- Buoyancy capacity: 30lbf (13.6kgf) / 40lbf (18.1kgf)
- Bladder material: 420D TPU coated nylon
- Shell material: 1680D PU coated ballistic nylon
- Inflator length: 16" (40.6 cm) (tech elbow)
- No. of automatic pressure relieve valve / pull dump: 1 (at left waist side)
- Mounting grommets distance (C-C): 11" (27.9 cm)
- Low pressure BC hose included
- For single back mounted tank only (100cuft / 15L internal volume)

Colors:
JT-30: BK, B, R, NY
JT-40: BK



IF-SMB K INFLATOR

- Length: 13" (33 cm), 16" (40.6 cm), 19" (48.2 cm), or 22" (55.9 cm)
- Connector style: Tech K style



TECHNICAL GEAR

Backpacks

Dolphin Tech also offers individual plate and harness backpack combos. Depending on your need, there are 4 models to choose from.

Basic Harness Backpack

JTA-1

- Components include:
- Basic harness (HB-1)
 - Aluminum plate (BP-4)
 - Crotch strap (HB-3)

JTS-1

- Components include:
- Basic harness (HB-1)
 - Stainless plate (BP-3)
 - Crotch strap (HB-3)



Deluxe Harness Backpack

JTA-2

- Components include:
- Deluxe harness (HB-2)
 - Aluminum plate (BP-4)
 - Crotch strap (HB-3)

JTS-2

- Components include:
- Deluxe harness (HB-2)
 - Stainless plate (BP-3)
 - Crotch strap (HB-3)



TECHNICAL GEAR

HB-1 HB1-L

BASIC HARNESS

- Material: 5cm(2") wide, 2.5mm thick nylon webbing
- Overall length: 320cm(126") with center grommet.
- HB1-L : 355.6cm(140") in overall length



HB-2 HB2-L

DELUXE HARNESS

- 5cm(2") wide, 2.5mm thick nylon webbing
- Anatomic shoulder pads and waist cushions
- Overall length: 320cm(126") (maximum)
- HB2-L : 355.6 cm(140") in overall length



HB-3 CROTCH STRAP

- The soft crotch strap further secures and stabilizes your scuba rig to your torso without causing any discomfort.
- Soft 5cm(2") wide, 1.2mm thick nylon webbing
 - Pre-fixed webbing keeper and flat stainless D-ring



TECHNICAL GEAR

HBH-1 HARNESS HOSE HOLDER

The holder conveniently keeps the BCD inflator hose close to the diver's torso when used with the Basic Harness.



HBW-2 WAIST PAD

Comfortable waist pads with webbing keepers and belt loops to securely fasten them to the Deluxe Harness.

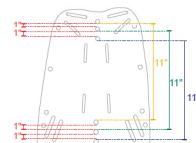
- Foam waist padding.
- Available in 2 sizes: S/M, L/XL

LENGTH	
S/M	24cm (9.5")
L/XL	28cm (11")



BP-3 BACK PLATE

- Material: 304 stainless steel
- Weight: 2.25kg(4.96lb)
- Mounting hole distance: 11"(27.9cm)
- Strong, rust-resistant
- Forms a part of the weighting system
- Pre-bent anatomical lower corners



BP-4 BACK PLATE

- Material: 6061 aluminium
- Weight: 0.8kg(1.76lb)
- Mounting hole distance: 11"(27.9cm)
- Light-weight, excellent for traveling



Each set is 2.5cm(1") apart and the distance between the holes of the same set is at industry standard 27.9cm(11") apart.

The back plate is the heart of a technical buoyancy compensator. It provides the vital connection between a diver and his scuba. Individually press-formed and all edges de-burred, DOLPHIN TECH back plates have 5cm(2") slots for the harness and crotch strap as well as 10 perimeter holes for attaching additional equipment such as stage bottles and canister torch. There are 3 sets of tank mounting holes along the plate's center line, giving the diver easier option to fine tune tank to torso position.

TECHNICAL GEAR

TAD-1 LOW PROFILE SINGLE TANK ADAPTER

- Material: 304 stainless steel
- Weight (incl. mounting hardware): 0.4kg (0.88lb)
- Mounting hole distance: 11" (27.9cm)

Made from strong and corrosion resistant stainless steel, DOLPHIN TECH single tank adaptor is essential when attaching a scuba cylinder to your tech BCD. It is low profile but creates enough space for a fully inflated air cell to go between the cylinder and the plate. The square mounting holes assist BCD assembling. Attachment hardware comes with 2 washers, winged nuts and split washers, and screws.



BP3H TWIN TANK BAND SET

- Material: 304 stainless steel
- Band height: 5cm (2")
- Band thickness: 1.5mm
- Weight (incl. mounting hardware): 1.57kg (3.46lb)
- Compatible with: Twin Ø184mm (7.25") cylinders



BP3H-8 TWIN TANK BAND SET IN 8"

- Material: 304 stainless steel
- Band height: 4.1cm (1.61")
- Band thickness: 1.5mm
- Weight (incl. mounting hardware): 1.3kg (2.8lb)
- Compatible with: Twin Ø203mm (8") cylinders



The recommended manifold clearance (valves' center to center distance) is 215mm ± 3mm. Each twin band set consists of 2 bands and stainless steel connecting hardware – 2 bolts (with welded-on end nut), 2 aircraft nuts, 2 winged nuts, 2 split washers and 8 washers and 2 screws (5.9").

TECHNICAL GEAR

Tech BCD Weight Pocket

These DOLPHIN TECH weight pouches provide a secure place on the tech BCD for the weight. Once mounted, they will not interfere with any movement while diving and the simple, fail-safe quick release mechanism works every time.

W-04 BACK PLATE WEIGHT

Designed to work with JT-WP2 back plate weight pouch, the lead weight is covered by plastic to prevent the heavy metal from leaking into the environment and make handling safe.

WEIGHT	1.4kg (3lb)
--------	-------------



JT-WP2 BACK PLATE WEIGHT POUCH

This unique weight pouch can be attached to the back plate recess without adding bulk or hydrodynamic resistance. Stainless steel grommets are set at 11" apart. Velcro enclosure. Works with IST's own environmental friendly weight bar W-04



JT-WP4/SV

Outer pouch material	Heavy duty 1680D nylon
Inner pouch material	420D nylon
Weight capacity	4kg (8.8lb) per pocket



JT-WP5

Outer pouch material	Heavy duty 1680D nylon
Inner pouch material	420D nylon
Weight capacity	4kg (8.8lb) per pocket



JT-WP7/SV

Outer pouch material	Heavy duty 1680D nylon
Inner pouch material	420D nylon
Weight capacity	7kg (15.4lb) per pocket



JT-WP8

- Non-diver releasable trim weight pouches for improved weight distribution and balance.
- Heavy duty 1680D nylon material will prolong usage.
- Open corners for drainage.
- Store extra weight on your belt while keeping it out of the way.

Weight capacity	2kg (4.4lb)
-----------------	-------------



TECHNICAL GEAR

BP-6 (FOR TANK 7"-7.25")

BP6-1 (FOR TANK 5.25")
TANK BAND WITH STAINLESS STEEL CAM BUCKLE

- Quick-release design tank band, only need to be set up for one time.
- Material: high quality webbing and 304 stainless steel cam buckle.
- For cylinders with outside diameter 7.25" (BP-6) and 5.25" (BP6-1)



BP2/I TANK BAND

The strong, lightweight cam buckle can withstand rigorous use. Supply 2" (5 cm) webbing makes threading an easy task. Fits tanks with diameter from 175mm (6.9") to 203mm (8")



HD-30H BCD HANDLE

This convenient feature makes attaching your tech BCD to the scuba cylinder an easy task and gives a carrying point for general handling of the BCD.



HB4-SCREW SCREW SET

- Material: 304 stainless steel
- Each set includes: Screw, washer and book style nut. These hardware are used to attach the plate pouch to the back plate. Each pack includes 8 sets.



TSP-2 THIGH STORAGE POUCH

- Material: wear-resistant 1680D PU-coated nylon, elastic thigh straps with quick release buckles, No.10 rust-proof YKK zip.

DIMENSION	25 cm x 15 cm x 6 cm (9.8" x 5.9" x 2.4")
-----------	--



BP2/S

STEEL CAM BUCKLE CYLINDER BAND

The strong, lightweight cam buckle can withstand rigorous use. Supply 2" (5 cm) webbing makes threading an easy task. Fits tanks with diameter from 175mm (6.9") to 203mm (8")



HB-4 PLATE POUCH

The pouch utilizes the back plate's recess to provide a convenient and streamlined storage space for your SMB which will be in a handy position when deployment is needed.



TECHNICAL GEAR

DR-1 BENT D-RING

- Material: 304 stainless steel
 - Thickness: Ø5mm (0.2")
 - Bent angle: 25°
- TIG welded D-rings for superior strength.



DR-2 FLAT D-RING

- Material: 304 stainless steel
 - Thickness: Ø5mm (0.2")
- TIG welded D-rings for superior strength.



DR-4
DR-5
COMMERCIAL DIVING HARNESS

- Material: 304 stainless steel
- TIG welded D-rings for superior strength.

DIMENSION
DR-4 Ø6mm (Ø0.23")
DR-5 Ø8mm (Ø0.31")



DR-6
STAINLESS STEEL WEBBING KEEPER WITH SLIDING-BAR

- 316 grade stainless steel
- Different from traditional webbing keepers, the unique sliding bar makes it much easier to do the adjustment of all kinds of webbings.

DIMENSION
6.25cm x 3.85cm x Ø4.75mm (2.45" x 1.5" x Ø0.19")
Sliding Bar 7cm x Ø9.5mm (2.75" x Ø0.37")



DR-7
STAINLESS STEEL RING

- Multipurpose 316 S.S

DIMENSION
Ø6mm (Ø0.23") x 6.25cm (2.36")



DR-8
COMBINATION OF WEBBING KEEPER AND D-RING

- Multipurpose 304 S.S

DIMENSION
10.5cm x 3.8cm (4.13" x 1.5")



BB-3
CAM BELT BUCKLE

- 304 S.S cam lock belt buckle



WK-4 WEBBING KEEPER

WK-4 is designed to stop the webbing from moving. Each has 2 x 5 cm (2") wide slots. It has the strength to hold the harness and a heavy equipment load.

DIMENSION
2.1cm x 6cm (0.83" x 2.3")



WK-5 WEBBING KEEPER

304 grade stainless webbing keeper.

DIMENSION
4.57 cm x 6.6 cm (1.8" x 2.6")



TECHNICAL GEAR

Complete Technical BCD

Dolphin Tech technical BCDs are completely modular, which means unlike a traditional jacket style BCD, each part can be replaced individually if worn, to change the existing setup for a particular dive mission, or to simply personalize the equipment to fit a diver's particular dive preferences. Most importantly, the nature of this feature allows Dolphin Tech to offer different combinations of complete BCDs from a number of different components to suit as many divers as possible.

65lbf Double Bladder Twin-tank BCD

Complete BCD with JT-65 horseshoe style air cell, BP3H twin-tank band sets and comes in 2 variations:

JT-65H

- Stainless steel plate + basic harness
- Components include:

1 3 4 5 6 7 8 9 10



JT-65D

- Stainless steel plate + deluxe harness
- Components include:

2 3 4 5 6 7 8 9 10



TECHNICAL GEAR

Technical BCD Components

1 HB-1

Basic harness & buckle set.



2 HB-2

Deluxe harness & buckle set.



3 HB-3

Crotch strap set.



4 HB-4

Back plate pad & pouch.



5 HB4-SCREW SET

Plate pad hardware.



6 HD-30H

BCD Handle



7 JT-WP7/SV x2

Tech BCD weight pockets.



8 BP3-H

Twin tank band set.

DIMENSION
184mm or 203mm (7.25" or 8")



9 BP-3

Stainless steel back plate.



10 JT-65

- EXP. Double bladder air cell
- 2 x IF-Tech standard tech BCD power inflator
- 2 x LP-BC low pressure hoses



Backside

TECHNICAL GEAR

Single-Tank Single-Bladder BCD

Complete BCD with JT-30 or JT-40 doughnut style air cell, single-tank adaptor and 2 harness options.

JT-30H / JT-40H

- Stainless steel plate + Basic harness
- Components include:
1 3 4 5 6 7 9 11/12 14 15

JT-31H / JT-41H

- Aluminum steel plate + Basic harness
- Components include:
1 3 4 5 6 7 10 11/12 14 15



JT-30D / JT-40D

- Stainless steel plate + Deluxe harness
- Components include:
2 3 4 5 6 7 9 11/12 14 15

JT-31D / JT-41D

- Aluminum steel plate + Deluxe harness
- Components include:
2 3 4 5 6 7 10 11/12 14 15



Twin-Tank Single-Bladder BCD

Complete BCD with JT-50 doughnut style air cell, Twin-tank bands and 2 harness options.

JT-50H

- Stainless steel plate + Basic harness and twin hose holders
- Components include:
1 3 4 5 6 7 8 9 13

JT-51H

- Aluminum steel plate + Basic harness and twin hose holders
- Components include:
1 3 4 5 6 7 8 10 13



JT-50D

- Stainless steel plate + Deluxe harness and twin hose holders
- Components include:
2 3 4 5 6 7 8 9 13

JT-51D

- Aluminum steel plate + Deluxe harness and twin hose holders
- Components include:
2 3 4 5 6 7 8 10 13



TECHNICAL GEAR

Technical BCD Components

1 HB-1

Basic harness & buckle set.



2 HB-2

Deluxe harness & buckle set.



3 HB-3

Crotch strap set.



4 HB-4

Back plate pad & pouch.



5 HB4-SCREW SET

Plate pad hardware.



6 HD-30H

BCD Handle



7 JT-WP7/SV x2

Tech BCD weight pockets.



8 BP3-H

Twin tank band set.

DIMENSION
184mm or 203mm (7.25" or 8")



9 BP-3

Stainless steel back plate.



10 BP-4

Aluminum back plate.



11 JT-30

Single bladder air cell



12 JT-40

Single bladder air cell



13 JT-50

Twin tank Single bladder air cell



14 TAD-1

Single tank adaptor



15 BP-2/I x2

Tank belt



TECHNICAL GEAR

Tank Valves

1 VLV-LT
LEFT K VALVE



2 VLV-RT
RIGHT K VALVE



- Material: Chrome plated brass
- Valve knob material: Thermal plastic
- Available in 200 or 300 bar version
- Tank neck valve thread: 3/4" – 14NSP or M25 x 2
- DIN female thread: G5/8 or M25
- Burst disk rupture pressure @ 310 bar (4500psi)
- The 200 bar version comes with YK-04 DIN to Yoke tank valve converter
- The burst discs are protected in a recess at the back of the valves.

3 VLV-PLT
LEFT K VALVE PLUG

- Attaches to: Left K valve (right-hand thread)



3 VLV-PRT
RIGHT K VALVE PLUG

- Attaches to: Right K valve (left-hand thread)



- Material: Chrome plated brass
- These plugs are needed when tank valves are to be used independently. Each has 2 o-rings for extra secure sealing.

4 VLV-HLT LEFT H VALVE
VLV-HRT RIGHT H VALVE

- Material: Chrome plated brass
- Valve knob material: high impact plastic
- Available in 200 bar outlet version
- DIN female thread: G5/8

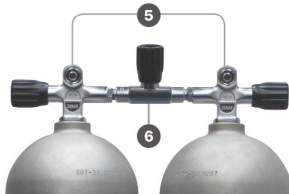


Attaches to Left K valve (right-hand thread)



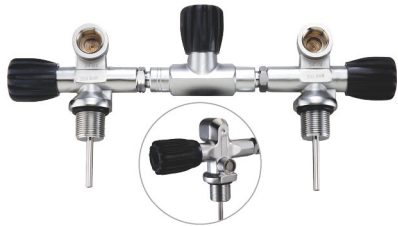
Attaches to Right K valve (left-hand thread)

The H valve allows the diver to use 2 independent sets of regulators on a single tank, providing redundancy requirement technical divers need. Comes with YK-04 DIN to Yoke tank valve converter



TECHNICAL GEAR

5 VLV-TWN/200
200 BAR MANIFOLD



5 VLV-TWN/300
300 BAR MANIFOLD

This item consists of a set of K valves (left and right) and the isolation cross bar needed for a twin tank setup. Available in 200 bar DIN version with YK-04 DIN to Yoke valve converter or 300 bar DIN only version.

Cross Bar Length
180mm(7.09")
Centre to Centre Spacing
214mm ± 3mm
Compatible with
Twin Ø184mm(7.25") or Ø203mm(8")

6 VLV-MNF
ISOLATION CROSS BAR



Shock absorbing, low friction valve knob and double o-rings for redundancy and better shock absorption.

Cross Bar Length
180mm(7.09")
Valve Knob Material
Thermal plastic
Material
Chrome plated brass

TK-1
TANK KNOB

- Material: Rubber
- Available in black and green to signify Nitrox / Oxygen tanks.



BK



GN

VP-4
DIN TANK VALVE
DUST COVER



DC-2P
1ST STAGE PLASTIC
DIN DUST COVER



YK-03
DIN TO YOKE 1ST STAGE CONVERTER

- Material: Chrome plated brass
- Compatible with: G5/8 200 bar or G5/8 300 bar DIN 1st stage connector
- Maximum working pressure: 232 bar (3365psi).



YK-04
DIN TO YOKE 1ST STAGE CONVERTER

- Material: Chrome plated brass
- Compatible with: 200 bar DIN tank valve with female G5/8 thread



TECHNICAL GEAR

HHBP-I
COMMERCIAL DIVING BELL HARNESS

- Specification**
- Plate thickness: 8.2mm / 0.32"
 - Plate reinforcement: Nylon mesh (2 layers)
 - Plate buoyancy: Negative
 - Dry weight (rubber plate): 750g / 1.65lb
 - Dry weight (complete): 2.4kg / 5.3lb (Size: L)
 - Webbing: 3.5mm thick, 2 inch wide nylon
 - Rivet: Stainless steel (36)
 - Hardware: Stainless steel

SIZES XS, S, M, L, XL



HHBP-III
COMMERCIAL DIVING BELL HARNESS

- Easy to use.
- Commercial diving bell harness with rubber back plate and crotch straps.
- Marseille style buckles on crotch straps provide convenience and easy to use.

- Specification**
- Plate thickness: 8.2mm / 0.32"
 - Plate reinforcement: Nylon mesh (2 layers)
 - Plate buoyancy: Negative
 - Dry weight (rubber plate): 750g / 1.65 lb
 - Webbing: 3.5mm thick, 2 inch wide nylon
 - Rivet: Stainless steel (42)
 - Grommets: Brass(20)

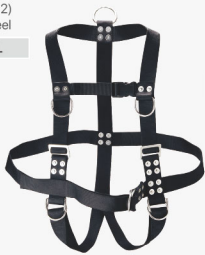
SIZES XS, S, M, L, XL



HHBP-V
COMMERCIAL DIVING BELL HARNESS

- Webbing: 3.5mm thick, 2 inch wide nylon
- Rivet: Stainless steel (32)
- Hardware: Stainless steel

SIZES XS, S, M, L, XL



HHBP-VII
COMMERCIAL DIVING BELL HARNESS

- Back plate: IST BP-3 stainless steel back plate
- Webbing: 3.5mm thick, 2 inch wide nylon
- Rivet: Stainless steel (50)
- Hardware: Stainless steel

SIZES XS, S, M, L, XL



BP-5
RUBBER PLATE

Each waist strap comes with 2 x 6mm hook up D-rings, secured to the lower edge and a large 8mm emergency hook up D-ring is riveted to the top of the center strap, located in between the shoulder straps.

MV-1
VELCRO TAPE

Velcro tape helps you to fix the extra webbings.

BK R



DR-5



DR-4



WK-5

TECHNICAL GEAR

HHWB-25/S
HHWB-40/S

- Commercial diving weight belt with adjustable nylon shoulder straps.
- Comes with 5 x 5 lbs or 5 x 8 lbs lead weight.
- High grade rubber weight belt with 2 added layers of tear-resistant nylon mesh as reinforcement.



HHWB-SS

- Nylon shoulder straps for HH-HWB commercial diving weight belt.
- Comes with 4 stainless steel hangers.



HHWB-25
HHWB-40

- Commercial diving weight belt.
- Comes with 5 x 5 lbs or 5 x 8 lbs lead weight.
- High grade rubber weight belt with 2 added layers of tear-resistant nylon mesh as reinforcement.



HHWB-BB

- Stainless steel buckle set for HH-HWB weight belt.
- Comes with 4 x 5/8" screws (HHWB-SCREW1) and 2 x stainless steel plates.



HHWB-W05/S 5 LB LEAD WEIGHT SET
HHWB-W08/S 8 LB LEAD WEIGHT SET

- Design for IST HHWB commercial diving weight belt.
- Comes with stainless steel screw, nut and plate sets.



HHWB-W05 5 LB LEAD WEIGHT
HHWB-W08 8 LB LEAD WEIGHT

- 5 lbs or 8 lbs lead weight for HH-HWB commercial diving weight belt.



TORCHES

T-60 APOLLO LED TORCH

- Four selectable operation modes:
High Output Mode→Mid Output Mode→
Low Output Mode→SOS Mode→OFF
- Magnetic power switch
- 6061-T6 Light-weight aluminum material
- Light diffuser attachable
- Patented build-in sliding cover provides protection
for users to the strong light when using the diffuser
- Come with one lanyard

Bulb type	1 x CREE XM-L2 U3
LED life	50000 hours
Brightness	1200 Lumens
Burn time	2-10 hours
Max. Depth	100m / 328ft
Weight(dry)	116g / 0.26lb (without battery)
Buoyancy	Negative
Two Kinds of Battery type	1 x 18650 rechargeable Li-ion (recommend) or 2 x CR123A primary lithium batteries
Dimension	13.2cm x Ø2.6cm (5.20" x Ø1.02")



T101/LI RECHARGEABLE HIGH POWER LED TORCH

Bulb type	3 x High Power LED
LED life	10000+ hours
Colour temp.	5500K
Brightness	660 Lumens
Burn time	3+ hours
Changing time	10-12 hours (approx.)
Max. Depth	100m / 328ft
Weight(dry)	820g / 1.8lb
Buoyancy	Negative
Battery type	Rechargeable Lithium-ion, 4.2V x 10400 mAH
Battery life	Up to 300 recharge - discharge cycles
Beam angle	35°
Dimension	15cm x 11cm x 7cm / 5.9" x 4.3" x 2.8" (incl. handle)

- Compact and sturdy, provides effective illumination for night diving or average exploration.
- Durable, attractive anodized aluminum alloy torch body.
- Comes with user-changeable photographic lens.
- Lantern handle with adequate clearance, even when using thick gloves.
- Switch lock prevents accidental activation.
- Twin O-ring waterproof seal.

CE APPROVED



T16 SINGLE HIGH POWER LED BACK-UP TORCH

- Handy-sized 3 watt back-up torch with effective illumination.
- Specially designed switch lock system to prevent accidental activation.
- Double o-ring sealed provides extra security against leakage.
- Quick and easy battery replacement.
- Strong plastic casing.

Burn time	5+ hours
LED life	10000+ hours
Colour temp.	5500K
Brightness	900 Lumens
Max. Depth	60m / 197ft
Weight(dry)	165g / 0.36lb (without battery)
Buoyancy	Positive
Battery type	3 C-sized batteries
Dimension	16 cm x 6 cm x 5 cm (6.2" x 2.4" x 2")



BK



O

LS-3/1W DIVE STROBE w/1W LED LIGHT

- Handy strobe with back up LED torch (1W x 1).
- The strobe's flash is highly visible, even over long distance
- Operates on 3 AA batteries
- Max 24 hours of continuous (strobe) signaling ability.
- Burn Time: 5~15 hours
- Waterproof to 40m



BAGS

BG-05 LIGHTWEIGHT DIVER'S ROLLING BAG

- Made from tough and durable 600D polyester fabric
- Telescopic handle can be stowed away when not using
- Adjustable padded shoulder straps for another option of carrying
- Capacity: 90L
- Weight: 5KG

DIMENSION

70cm x 35cm x 40cm (27.6" x 13.8" x 15.8")



BG-03/S DIVER'S ROLLING BAG

- Capacity: 131L
- Telescopic handle can be stowed away when not rolling.
- Super light but durable polyester fabric makes this bag extremely suited for traveling and it's 5 kg (11 LB) only!

DIMENSION 80cm x 47cm x 40cm (31.5" x 18.5" x 16")



BAGS

BG-02 JET ROLLING BAG

This roller bag – cum – back pack is small enough to be carried on board of airplanes yet it is roomy enough for your personal lap-top and other knick-knacks!

DIMENSION 47cm x 34cm x 17cm (18.4" x 13" x 6.7")



MGB-36 MESH BAG

- Made from lightweight and tough 600D polyester fabric with durable nylon mesh
- Roomy, lightweight, and easy to maintain

DIMENSION 75cm x 30cm x 24cm (29.5" x 11.8" x 9.4")



MGB-10 FOLDED MESH BAG

- Large retractable mesh backpack.
- When not in use, MGB-10 can be folded and tucked away neatly in your equipment bag.
- Ideal as a spare carrying bag.

DIMENSION

Fully Extended	73cm x 35cm x 40cm (29" x 14" x 16")
Folded	7cm x 20cm x 25cm (2.7" x 7.9" x 9.8")



BAGS

MGB-35 MESH BAG w/ SHOULDER STRAPS

- Heavy duty nylon mesh bag.
- Adjustable padded shoulder straps.
- 1 external & 1 internal pocket.

DIMENSION	67cm x 37cm x 37cm (26.4" x 14.6" x 14.6")
-----------	---



MGB-11 MGB-12 MESH BAG

	DIMENSION
MGB-11	81cm x Ø40cm (32" x Ø16")
MGB-12	68cm x Ø32cm (27" x Ø12")



BGM-02 ONE-HAND-RELEASE GAME BAG

- Spring-loaded handle catch bag provides convenience, quick and easy access to the interior.
- The bag can be opened with only one hand, leaving the other hand free to hold on to the catch.
- Heavy duty 420D nylon and lasting mesh bottom allows for fast drainage.
- Stainless steel made handle and spring.

DIMENSION	70cm x 42cm (27" x 16")
-----------	-------------------------



BGM-05

Heavy duty 420D nylon and lasting mesh bottom allows for fast drainage. Stainless steel made handle with clip provides convenience, quick and easy access to the interior.

DIMENSION	90cm x 60cm (35.4" x 23.6")
-----------	--------------------------------



BAGS

DB-14

Mesh bag with plastic D-ring and drawstring closure.

DIMENSION
68.5cm x 41cm (26" x 16")



DB-16

Durable mesh bag with drawstring closure.

DIMENSION
70cm x 45cm (27" x 17")



DB-6

DB-7 DRY CANISTER

	DIMENSION
DB-6	Ø7cm x 18cm (Ø2.8" x 7.2")
DB-7	Ø6.4cm x 16cm (Ø2.5" x 6.3")



R



B



NY



BK

DB-10L 10L DRY BAG

- Lightweight and durable dry bag made from environmental friendly material 500D TPU coated fabric.
- Comes with 1.5" webbing strap.

DIMENSION	Ø20cm x 48cm (Ø7.9" x 18.9")
-----------	------------------------------



GN

DB-20L 20L DRY BAG

- Lightweight and durable dry bag made from environmental friendly material 500D TPU coated fabric.
- Comes with 1.5" webbing strap.

DIMENSION	Ø23.5cm x 61cm (Ø9.3" x 24")
-----------	------------------------------



B

DB-40L/N 40L DRY BAG

- Comes with two padded shoulder straps.
- Lightweight, durable dry bags.
- Made from environmental friendly material (500D TPU coated PVC).

DIMENSION	Ø30cm x 72cm (Ø11.8" x 28")
-----------	-----------------------------



BK

KNIVES

K-25 KNIFE SCISSORS

- Overall length: 28cm (11")
- 420 grade stainless steel with pointed-tip blade
- Rubber knife straps are included
- Easy for one-handed operation



K-40 FOLDING KNIFE

- Foldable 420 stainless steel diving BC knife
- Comes with lanyard

LENGTH	
Extend	21cm (8.25")
Fold	12cm (4.7")



K-21 STAINLESS STEEL KNIFE

- 11cm(4.3") long 420 grade stainless steel pointed-tip blade
- Serrated edge with line cutting groove
- Rubber knife straps included
- Designed for spearfishing purpose



K-02

- 14.5cm(5.7") long 3mm thick of 420 grade stainless steel blade.
- Serrated edge with line cutting groove.
- Rubber knife straps included.



K-09

- 13.5cm(5 3/8") long 420 grade stainless steel blade
- Steel butt for underwater signaling
- Proper serrated edge and line cutting groove
- Rubber knife straps included



118

KNIVES

K-10

- 10.5cm(4 3/8") long 420 grade stainless steel pointed-tip blade
- Steel butt for underwater signaling
- Proper serrated edge and line cutting groove
- Rubber knife straps included



CB

K-11

- 10.5cm(4 3/8") long 420 grade stainless steel blunt tip blade
- Steel butt for underwater signaling
- Proper serrated edge and line cutting groove
- Rubber knife straps included



CB

BK

K-28 BC KNIFE

- Back-up BCD knife with 7cm(2.8") 420 grade stainless blade
- Durable and easy-carry nylon sheath, which can be mounted upside down on BCD shoulder strap or stored in BCD pockets.
- Serrated edge with line cutting groove



K-30 BC KNIFE **TITANIUM**

- Back-up BC knife made from high grade #6-4 titanium
- Durable and easy-carry nylon sheath, which can be mounted upside down on BC shoulder strap or stored in BC pockets
- Serrated edge with line cutting groove
- Overall length: 15cm (5.9")



BK

B

GN

KB-01

- Rubber knife strap.
- 45cm(17.7") long.



119

SUNSCREEN



Eco-Friendly

The ocean, seemingly limitless, has always encouraged exploration and discovery through scuba diving but at a cost to the delicate underwater environments. Since IST's conception in the 1970s, we have strived to supply quality scuba gear and we're proud to announce that we are officially adopting sustainability to our ethos. The time has come to shift our company focus and do our part in aiding our oceans recovery from years on end of pollution.

Our development and manufacturing processes have shifted towards eco-friendly solutions. Our call to action begins with tangible updates. We are transitioning from clamshell packaging to PET-recyclable plastic bags and cardboard boxes. Currently our sunscreens are being developed into coral reef safe formulas omitting any harmful chemicals to the sea. The signature ProEAR Mask is in the testing process with REACH, which would result in a certificate of compliance of chemical substances from the European Union.

This is our gift to the sea after widespread technological advances throughout our company. Our goal is to keep our delicate oceans ecosystems protected and untainted by exploration. Now more than ever, developing, manufacturing and actively using eco-friendly products is essential to our oceans well-being. Transitioning into 2021, IST has a clear vision and drive towards sustainability. Join us in this new journey.

SS-01 **NEW**

ANTI-JELLYFISH SUNSCREEN

IST research and develop the Mineral Sunscreen Lotion contains no artificial chemical ingredient. Contains Reef friendly formula without Octinoxate & Oxybenzone.

The Anti-Jellyfish protection suits for all kinds of water sports activities.

- Mineral Sunscreen lotion in SPF30
- **Anti-Jellyfish formula**
- **Reef Friendly with natural ingredient**
- Extracting from Laminaria Ochroleuca, Tocopheryl acetate, squalane and several elements brings moisturize and protection of skin.
- Fragrance Free for all skin types, provides protection from head to toe.



BALLOON & BUOY

SB-1 "DIVER BELOW" BUOY

Surface marker with international dive flag.



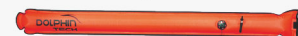
SB-5/Q SURFACE MARKER BUOY

- Quick-disconnect inflation valve.

DIMENSION 154cm x 18cm (60" x 7")



Automatic valve releases excess pressure to prevent SB-5/Q from bursting



SB-5 SURFACE MARKER BUOY

Reusable safety sausage with a unique two-layer design: the outer layer is made of 210D nylon with water-resistant PU coating, which protects the inner bladder.

DIMENSION 154cm x 18cm (60" x 7")

The sturdy storage pouch has a mesh bottom for quick drainage. It can be carried on any 2" webbing or clipped onto a d-ring.



SB-8/R SURFACE MARKER BUOY WITH REFLECTIVE TAPE

- Made from 210D TPU coated Nylon.
- Plastic oral inflator.
- SOLAS reflective tape.

DIMENSION 114cm x 12cm (45" x 4.7")



SB-8/Q-R SURFACE MARKER BUOY WITH REFLECTIVE TAPE

- Made from 210D TPU coated Nylon.
- Quick-disconnect metal inflator valve can be inflated with BC hose.
- SOLAS reflective tape.

DIMENSION 114cm x 12cm (45" x 4.7")



LB-50/Q 50 LBF

LB-100/Q 100 LBF LIFT BAG

- 50lbf and 100lbf lift bag with quick-disconnect inflation valve and over-pressure valve.
- 304 stainless steel D-ring.
- With a 3-dimensional cutting, Dolphin Tech's lift bags are much more stable when deployed. It has a self-sealing gas entrance which prevents accidental loss of buoyancy and an automatic dump valve located on top provides ascent speed control and prevents over-pressure damage. 2 bungee loops at the top can be used to roll up the lift bag for storage purpose.



WRITING SLATE

WR-1 UNDERWATER WRITING SLATE

- Comes with a clip for convenient carrying
- Equipped with quick release buckle

DIMENSION	12.5cm x 15cm(5" x 6")
-----------	------------------------



WR-1/F GLOW IN DARK UNDERWATER WRITING SLATE

- Comes with a clip for convenient carrying
- Equipped with quick release buckle
- Comes with **charcoal pencil** instead of wooden pencil to prevent it from being corrosion by sea water

DIMENSION	12.7cm x 15cm(5" x 6")
-----------	------------------------



WR-3 MULTI-SIDED UNDERWATER WRITING SLATE

- Unique slate with elastic hinge for more writing space without losing compactness
- Can be attached to the forearm for streamlining and out of the way of any wrist instrument

DIMENSION	10.5cm x 12cm(4.1" x 4.7")
-----------	----------------------------



WR-3/F GLOW IN DARK MULTI-SIDED UNDERWATER WRITING SLATE

- Unique slate with elastic hinge for more writing space without losing compactness
- Can be attached to the forearm for streamlining and out of the way of any wrist instrument
- Comes with **charcoal pencil** instead of wooden pencil to prevent it from being corrosion by sea water

DIMENSION	10.5cm x 12cm(4.1" x 4.7")
-----------	----------------------------



WRITING SLATE

WR-4 COMPASS MOUNTED WRITING SLATE

- Attachment via retractable lanyard

DIMENSION	7cm x 20cm (2.8" x 8")
-----------	------------------------



WR-5 UNDERWATER NOTEBOOK

- Contains 25 pages of reusable waterproof paper.
- The cover is made from durable 2250D PU coated ballistic nylon.
- Clear-window pockets on the inside and outside of the back cover for important items such as tables, checklist, compass etc



DIMENSION	
Open	20cm x 25cm(8" x 10")
Folded	20cm x 12.5cm(8" x 5")

WR5-REFILL UNDERWATER NOTEBOOK REFILLED

- 25 Pages of waterproof reusable with hard plastic covers.



DIMENSION	
Open	17.5cm x 20.4cm(7" x 8")
Folded	17.5cm x 10.2cm(7" x 4")

WR-6 UNDERWATER SLATE WITH RETRACTOR

- Underwater slate with ruler (length 15 cm / 6").
- Retractor with lockable mechanism to stop the slate from being constantly pulled back while writing.
- Stainless steel wire length @ 47.5 cm (18.7").

DIMENSION	17.5cm x 12.7cm(7" x 5")
-----------	--------------------------



WR-7 UNDERWATER WRITING SLATE

- Quick release buckle and clip
- A4 size

DIMENSION	27.9cm x 20.3cm (11" x 8")
-----------	----------------------------



MOUTHPIECES

MP-1 REGULATOR MOUTHPIECE

- Available in silicone, slitex.



MP1-M MINI MOUTHPIECE



MP-2 COMFORT MOUTHPIECE



MP-5 ERGONOMIC MOUTHPIECE



MP-6 MOULDABLE MOUTHPIECE

Mouldable to suit each individual's dental profile. The most outstanding benefit of having a properly fitted mouthpiece is less physical exertion is needed when using a second stage equipped with this mouthpiece, leaving the diver with significantly reduced fatigue. Simply immerse the mouthpiece (including all of its attachments to keep its profile in critical sections) into 95°C / 203°F water for 30 seconds, place it inside mouth, biting down and sucking on it for 30 seconds. Rinse with cold water and then recheck fit. Repeat the process as necessary.

N/A IN NORTH AMERICA.



MP-7 COMFORT MOUTHPIECE

- Larger, longer tabs offer a greater contact surface to spread bite force, lessening jaw fatigue.
- Soft, flexible, hypoallergenic silicone construction.
- Available in Transparent or Black

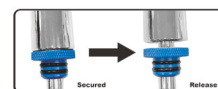


SIGNALING DEVICES

TA-5/E **NEW**

- Compact stainless underwater shaker with magnetic device to stop unwanted rattle.

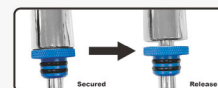
OVERALL LENGTH 15.5cm (6")



TA-6/E **NEW**

- Same as TA5 with measure rod added (8 x 2.54cm segments)

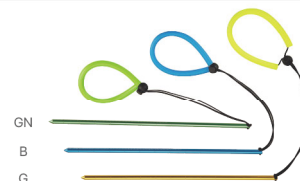
OVERALL LENGTH 28cm (11")



TA-7

- Aluminum pointer with ruler and lanyard.

OVERALL LENGTH 30cm (11.8")



TA-NY TANK BANGER

For underwater use. The super-stretchy silicone band can wrap around any dive cylinder from Ø15cm(Ø6") and up. The hard plastic ball can be pulled and released, producing noise to attract attention.



WH-04 SPLIT FIN SHAPED WHISTLE



CPR EMERGENCY RESUSCITATION KIT

- Allows mouth to mouth resuscitation without physical contact.
- Made from hypoallergenic silicone.
- Separate oxygen tube inlet.
- Comes with protective case.



WEIGHT ACCESSORIES

W-01 1KG(2.2LB) COATED LEAD WEIGHT W-02 2KG(4.4LB) COATED LEAD WEIGHT

- Safe to handle and better for the environment.
- Plastic coating will prolong usage.
- 5cm (2") webbing slots.



RB1-BK QUICK RELEASE BELT

- Quick release weight belt with no-snap design.
- One-hand adjustable and quick releasable enhances comfort and safety.
- 2 weight keepers included.



WB-10 WEIGHT BELT

- Weight belt with plastic buckle and 5cm(2") webbing.
- 150cm (5') long.



WB-12 WEIGHT BELT

- Weight belt with BB-3 stainless buckle and 5cm(2") webbing.
- 150cm(5') long.



BB BELT BUCKLE-PLASTICS



BB-3 CAM BELT BUCKLE

- 304 stainless steel cam lock belt buckle.
- Secure 3-slot design



WK WEBBING KEEPER

- Webbing keeper with serrated teeth. It is durable enough to be used as weight keeper. The slots are 5cm(2") wide.



WK-2 D-RING WEBBING KEEPER

- 304 stainless webbing keeper with serrated teeth and a D-ring welded on for convenience. The slots are 5cm(2") wide.



WK-3 STAINLESS WEBBING KEEPER

- 304 stainless webbing keeper with serrated teeth and can also function as a weight keeper. The slots are 5cm(2") wide.



WK-4 WEBBING KEEPER

- WK-4 is designed to stop the webbing from moving. Each has 2 x 5 cm (2") wide slots. It has the strength to hold the harness and a heavy equipment load.

DIMENSION
2.1cm x 6cm(0.83" x 2.3")



WK-5 WEBBING KEEPER

- 304 grade stainless webbing

DIMENSION
4.57 cm x 6.6 cm (1.8" x 2.6")



REELS

RL-3/N 30M /100FT

RL-4/N 50M /165FT

RL-5/N 15M /45FT **NEW**

- The last 5m(15ft) line has been changed into orange color for the purpose of being as a decompression stop reminder for divers
- Comes with marine grade brass clip
- Strong string with special braiding capable of holding onto object with maximum 80kg / 176lb(dry weight)
- Light weight construction:
 - RL-3/N 156g (5.5oz)
 - RL-4/N 194g (6.83oz)
 - RL-5/N 115g (4.06oz)



RL-5/N



RL-3/N
RL-4/N

RL-6/N 15M /45FT ALUMINUM REEL

RL-7/N 30M /100FT ALUMINUM REEL

- The last 5m(15ft) line has been changed into orange color for the purpose of being as a decompression stop reminder for divers
- Strong string with special braiding capable of holding onto object with maximum 80kg / 176 lb (dry weight)
- Flared design makes for easier winding when wearing gloves underwater.
- Larger center hole can accommodate thicker gloves.
- Constructed of tough anodized aluminum alloy for durability.
- Come with a 10cm (4") 304 stainless steel double clip.
- Light weight construction:
 - RL-6/N 236g(8.32oz.)
 - RL-7/N 291g(10.26oz.)



RL-6/N



RL-7/N

RL-1 80M /265FT

RL-2 45M /150FT

- Strong string with special braiding capable of holding onto object with maximum 80kg / 176 lb (dry weight)
- Reel and carrying handle made from durable ABS material
- Ratcheted system allows better control of the line when paying out and reeling in.



RL-1



RL-2

ARROWS/ DRIFT HOOK & JON LIN

AW-1 LINE ARROW



AW-3

- Colors: F (Glow in dark), NY, Q, W
- Overall Length: 8.4cm(3.3")



F

NY

O

W

AW-2 GLOW IN DARK LINE ARROW



AW-4

- Colors: F (Glow in dark), NY, Q, W
- Overall Length: 5.5cm(2.2") in diameter



F

NY

O

W

JL-1 JON-LINE

- Webbing material: 2.5cm(1") wide nylon
 - Length: 2.1m (7')
 - Hook material: 4mm 304 stainless steel
- Jon Line helps the diver remain in the same location at a certain depth when performing decompression stops. Comes with it's own storage pouch, which has a loop to fit any 5cm(2") webbing for carrying purpose.



JL-2 DRIFT HOOK

- Webbing material: 2.5cm(1") wide nylon
 - Length: 2.1m (7')
 - Hook material: 5mm 304 stainless steel
- This is the tool to help a diver stay in a particular location while drift diving. Comes with a storage pouch that can be carried on any 5cm(2") webbing.



JL-4

SINGLE DRIFT HOOK

- Stainless steel hook and snap.
- Overall length: 150cm(5')



JL-5/L

DOUBLE DUAL DRIFT HOOK

- Stainless steel hook and snap.
- Overall length: 150cm(5')



JL-6

COILED DRIFT HOOK

- Stainless steel wire-reinforced coil drift hook with high grade stainless steel hook and clip
- Max. Load: 80KG (176lb)
- Overall length: 9.5cm (3.7")
- Length in full extension: 1.5M (4'11")



CLIPS & LANYARD

SP-34A

- 5cm(2") stainless steel quick link provides convenient semipermanent connection
- 5mm wire thickness
- All sharp edges removed from the manufacturing process



SP-35A

- 4cm(1.6") stainless steel quick link.
- 4mm wire thickness.
- All sharp edges removed from the manufacturing process.



SP-32A

- Overall length: 10cm(3.94")



SP-33A

- Overall length: 7cm(2.8")



SP-42A

STAINLESS STEEL CLIP

- Overall length: 11cm (4.3")



SP-31A

- Stainless steel double-end clips
- Overall length: 10cm(3.94")
- Each gate is rounded for safe underwater operation



SP-40A

DOUBLE-END CLIP

- Stainless steel double-end clip
- Overall length: 10cm (3.94")



SP-41A

STAINLESS STEEL DOUBLE-END CLIP

- Corrosion-resistant stainless steel construction.
- Total length: 10.8cm (4.25") are 5cm(2") wide.



SP-37A

- 316 grade stainless steel clip.
- Overall length : 8.5cm(3.3")



SP-38A

- 316 grade stainless steel clip.
- Overall length : 8cm(3.1")



SP-39A/S

- 316 grade stainless steel clip
- Overall length : 8.7cm (3.4")



CLIPS & LANYARD

MA001 MA002

- 316 grade stainless steel shackles.

DIAMETER	
MA001	9.5mm(0.375")
MA002	7.9mm(0.312")



DR-1 BENT D-RING

- Material: 304 stainless steel
- Thickness: Ø5mm (0.2")
- Bent angle: 25°

TIG welded D-rings for superior strength.



DR-2 FLAT D-RING

- Material: 304 stainless steel
- Thickness: Ø5mm (0.2")

TIG welded D-rings for superior strength.



DR-4

DR-5

COMMERCIAL D-RING

- Material: 304 stainless steel
- TIG welded D-rings for superior strength.

DIMENSION	
DR-4	Ø6mm(Ø0.23")
DR-5	Ø8mm(Ø0.31")



DR-6

316 STAINLESS STEEL WEBBING KEEPER WITH SLIDING-BAR

DIMENSION	
6.25cm x 3.85cm x wire 4.75mm(2.45" x 1.5" x 0.19")	
Sliding Bar	7cm x wire 9.5mm(2.75" x 0.37")



DR-7

STAINLESS STEEL RING

- Multipurpose 316 stainless steel ring.

DIMENSION	Ø6mm(Ø0.23") x 6.25cm(2.36")
-----------	------------------------------



DR-8

COMBINATION OF WEBBING KEEPER AND D-RING

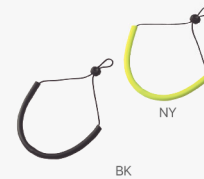
- 304 Stainless steel material

DIMENSION	10.5cm x 3.8cm(4.13" x 1.5")
-----------	------------------------------



SD-1

Lanyard with silicone tube sleeve and stopper for convenient usage



CLIPS & LANYARD/ KEY CHAINS

SP-6A

Coil Lanyard with clips



SP-8A

Stainless steel wire-reinforced coil lanyard with quick release buckle and stainless steel clip



SP-2A/S

- Small swivel stainless steel 316 grade clip with 1" webbing
- Can be used with 2" wide weight belt



KC01-A

- Tank shaped key ring.
- O-ring hook included:

Ø11mm x 2.4mm x 1
Ø14mm x 2.4mm x 3



DF1/S DF2/S

DIVE FLAG

- Nylon "Diver-Down" flag with metal grommets.
- 304 stainless steel stiffener.

DIMENSION	
DF1/S	50cm x 60cm (20" x 24")
DF2/S	35cm x 45cm (14" x 18")



132

SP7A-1

Stainless steel wire-reinforced coil lanyard with quick release buckle and stainless steel clip



SP-25A RETRACTOR

- Overall Length: 18.2cm(7.15")
- Maximum extension: 91.4cm(36")



KC13 SAFARI KEY CHAIN

NEW

DIMENSION 10.5cm x 2.7cm x 0.9cm (4.1" x 1" x 0.1")



DF3/S DF4/S

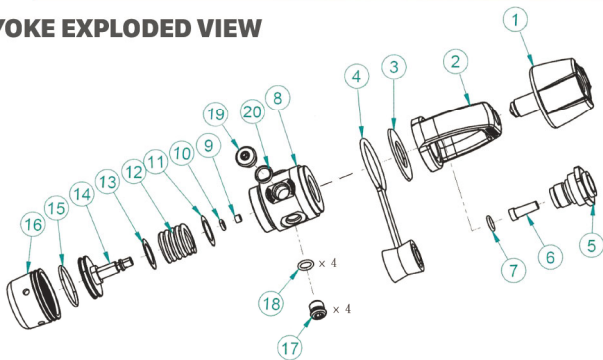
ALPHA DIVE FLAG

Nylon Alpha "A" flag with 304 stainless steel stiffener and metal grommets.

DIMENSION	
DF1/S	50cm x 60cm (20" x 24")
DF2/S	35cm x 45cm (14" x 18")



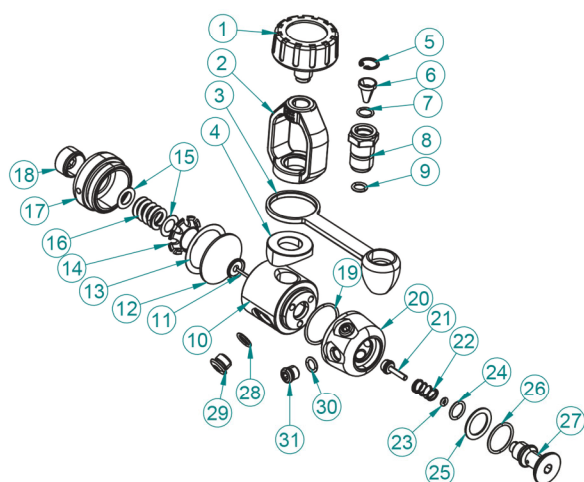
R7 YOKE EXPLODED VIEW



No.	Item No.	Description
1	YK-01	Yoke knob
2	MR7-02	Yoke
3	MR7-03	Styling cup
4	MR7-04	Dust cap
5	MR7-05	Gas inlet / Yoke retaining nut
6	MR7-06	Cone mesh filter
7	MR7-07	NBR O-ring (AS568-011 N90)
8	MR7-08	Main housing
9	MR7-09	High-pressure seat
10	MR7-10	NBR O-ring (AS568-008 N70)
11	MR7-11	Pressure adjustment shim - Thin
12	MR7-12	Main spring
13	MR7-13	Pressure adjustment shim - thick
14	MR7-14	Piston
15	MR7-15	NBR O-ring (AS568-023 N70)
16	MR7-16	Ambient pressure chamber
17	MR7-17	LP port plug
18	MR7-18	LP port plug O-ring (AS568-011 N70)
19	MR7-19	HP port plug
20	MR7-20	HP port plug O-ring (AS568-012 N90)

133

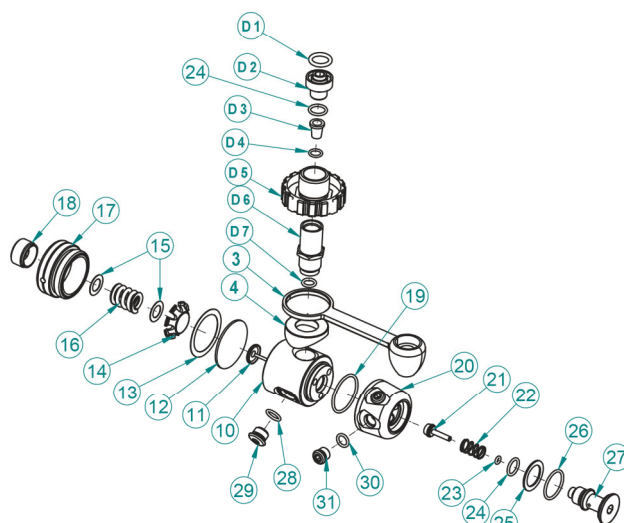
R8 YOKE EXPLODED VIEW



No.	Item No.	Description
1	YK01	Yoke knob
2	MR8-02	Yoke (Max. 232 BAR)
3	MR8-03	Dust cap
4	MR8-04	Saddle
5	MR8-05	Retainer Ring
6	MR8-06	Mesh filter
7	MR8-07	NBR O-RING 9.0X1.5 N90
8	MR8-08	Yoke Retainer
9	MR8-09	NBR O-ring AS568-011 N90
10	MR8-10	Main housing
11	MR8-11	Diaphragm Lifter
12	MR8-12	Diaphragm
13	MR8-13	Diaphragm washer
14	MR8-14	Spring seat
15	MR8-15	Spring washer
16	MR8-16	Main spring

No.	Item No.	Description
17	MR8-17	Diaphragm cap
18	MR8-18	Adjust Screw
19	MR8-19	NBR O-ring AS568-024 N70
20	MR8-20	Turret
21	MR8-21	H. P. Seat
22	MR8-22	Valve Spring
23	MR8-23	NBR O-ring AS568-006 N90
24	MR8-24	NBR O-ring AS568-013 N90
25	MR8-25	Thrust washer
26	MR8-26	NBR O-ring AS568-019 N70
27	MR8-27	Turret bolt
28	MR8-28	NBR O-ring AS568-012 N90
29	MR8-29	H. P. plug
30	MR8-30	NBR O-ring AS568-011 N70
31	MR8-31	L. P. plug

R8 DIN EXPLODED VIEW

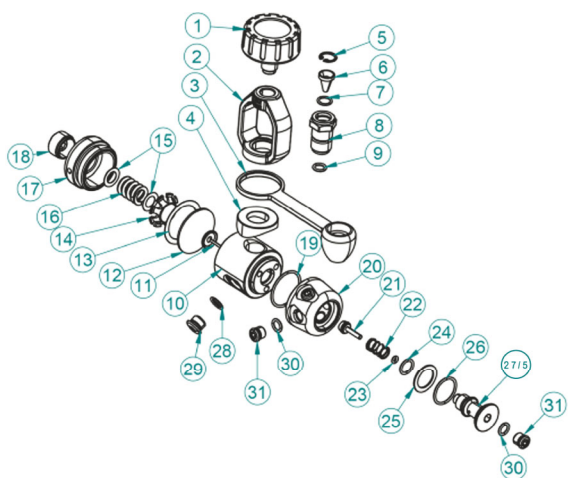


No.	Item No.	Description
D1	MR8-D1	NBR O-ring AS568-112 N90
D2	MR8-D2	DIN Retainer
D3	MR8-D3	DIN filter
D4	MR8-D4	NBR O-ring S-8 N90
D5	MR8-D5	DIN wheel
D6	MR8-D6	DIN housing
D7	MR8-D7	NBR O-ring 9.0X1.5 N90
3	MR8-03	Dust cap
4	MR8-04	Saddle
10	MR8-10	Main housing
11	MR8-11	Diaphragm Lifter
12	MR8-12	Diaphragm
13	MR8-13	Diaphragm washer
14	MR8-14	Spring seat
15	MR8-15	Spring washer

No.	Item No.	Description
16	MR8-16	Main spring
17	MR8-17	Diaphragm cap
18	MR8-18	Adjust Screw
19	MR8-19	NBR O-ring AS568-024 N70
20	MR8-20	Turret
21	MR8-21	H. P. Seat
22	MR8-22	Valve Spring
23	MR8-23	NBR O-ring AS568-006 N90
24	MR8-24	NBR O-ring AS568-013 N90
25	MR8-25	Thrust washer
26	MR8-26	NBR O-ring AS568-019 N70
27	MR8-27	Turret bolt
28	MR8-28	NBR O-ring AS568-012 N90
29	MR8-29	H. P. plug
30	MR8-30	NBR O-ring AS568-011 N70
31	MR8-31	L. P. plug

EXPLODED VIEWS & SERVICE KITS

R8/5 YOKE EXPLODED VIEW

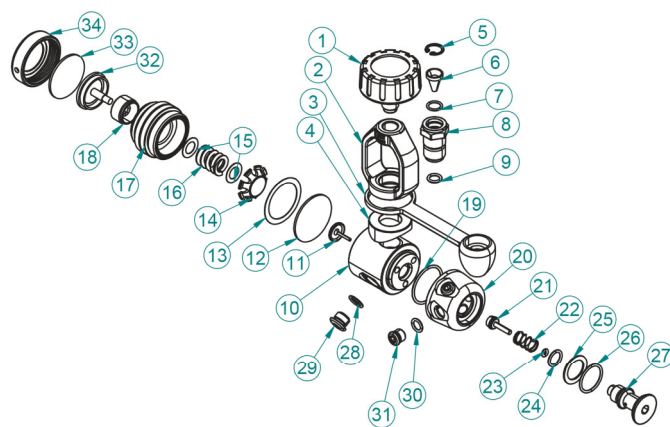


No.	Item No.	Description
1	YK01	Yoke knob
2	MR8-02	Yoke (Max. 232 BAR)
3	MR8-03	Dust cap
4	MR8-04	Saddle
5	MR8-05	Retainer Ring
6	MR8-06	Mesh filter
7	MR8-07	NBR O-RING 9.0X1.5 N90
8	MR8-08	Yoke Retainer
9	MR8-09	NBR O-ring AS568-011 N90
10	MR8-10	Main housing
11	MR8-11	Diaphragm Lifter
12	MR8-12	Diaphragm
13	MR8-13	Diaphragm washer
14	MR8-14	Spring seat
15	MR8-15	Spring washer
16	MR8-16	Main spring

No.	Item No.	Description
17	MR8-17	Diaphragm cap
18	MR8-18	Adjust Screw
19	MR8-19	NBR O-ring AS568-024 N70
20	MR8-20	Turret
21	MR8-21	H. P. Seat
22	MR8-22	Valve Spring
23	MR8-23	NBR O-ring AS568-006 N90
24	MR8-24	NBR O-ring AS568-013 N90
25	MR8-25	Thrust washer
26	MR8-26	NBR O-ring AS568-019 N70
27/5	MR8-27/5	Turret bolt with 5TH Port
28	MR8-28	NBR O-ring AS568-012 N90
29	MR8-29	H. P. plug
30	MR8-30	NBR O-ring AS568-011 N70
31	MR8-31	L. P. plug

EXPLODED VIEWS & SERVICE KITS

R8N YOKE EXPLODED VIEW

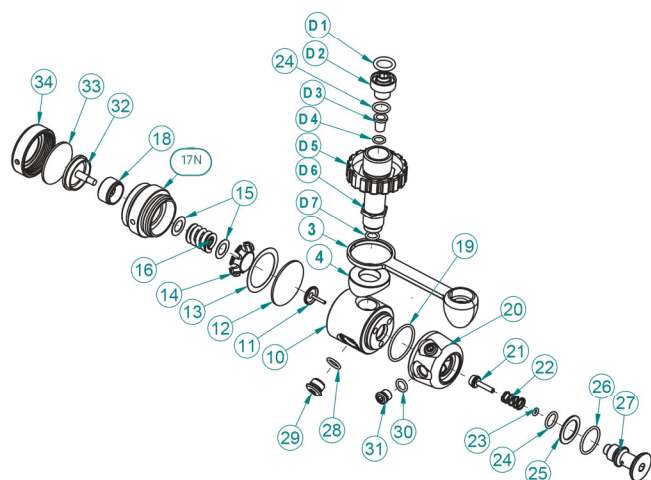


No.	Item No.	Description
1	YK01	Yoke knob
2	MR8-02	Yoke (Max. 232 BAR)
3	MR8-03	Dust cap
4	MR8-04	Saddle
5	MR8-05	Retainer Ring
6	MR8-06	Mesh filter
7	MR8-07	NBR O-RING 9.0X1.5 N90
8	MR8-08	Yoke Retainer
9	MR8-09	NBR O-ring AS568-011 N90
10	MR8-10	Main housing
11	MR8-11	Diaphragm Lifter
12	MR8-12	Diaphragm
13	MR8-13	Diaphragm washer
14	MR8-14	Spring seat
15	MR8-15	Spring washer
16	MR8-16	Main spring
17N	MR8-17N	Diaphragm Clamp (Ice) - replace MR8-17

No.	Item No.	Description
18	MR8-18	Adjust Screw
19	MR8-19	NBR O-ring AS568-024 N70
20	MR8-20	Turret
21	MR8-21	H. P. Seat
22	MR8-22	Valve Spring
23	MR8-23	NBR O-ring AS568-006 N90
24	MR8-24	NBR O-ring AS568-013 N90
25	MR8-25	Thrust washer
26	MR8-26	NBR O-ring AS568-019 N70
27	MR8-27	Turret bolt
28	MR8-28	NBR O-ring AS568-012 N90
29	MR8-29	H. P. plug
30	MR8-30	NBR O-ring AS568-011 N70
31	MR8-31	L. P. plug
32	MR8-32	Transmittor
33	MR8-33	Silicone Disk
34	MR8-34	EN Cap

EXPLODED VIEWS & SERVICE KITS

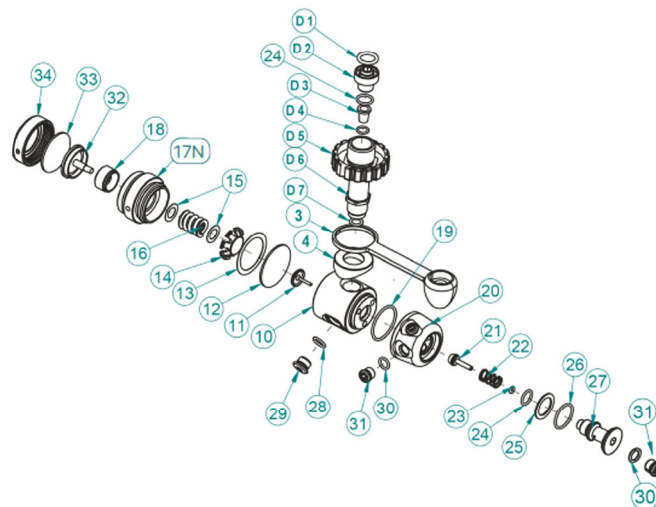
R8N DIN EXPLODED VIEW



No.	Item No.	Description	No.	Item No.	Description
D1	MR8-D1	NBR O-ring AS568-112 N90	18	MR8-18	Adjust Screw
D2	MR8-D2	DIN Retainer	19	MR8-19	NBR O-ring AS568-024 N70
24	MR8-24	NBR O-ring AS568-013 N90	20	MR8-20	Turret
D3	MR8-D3	DIN filter	21	MR8-21	H. P. Seat
D4	MR8-D4	NBR O-ring S-8 N90	22	MR8-22	Valve Spring
D5	MR8-D5	DIN wheel	23	MR8-23	NBR O-ring AS568-006 N90
D6	MR8-D6	DIN housing	24	MR8-24	NBR O-ring AS568-013 N90
D7	MR8-D7	NBR O-ring 9.0X1.5 N90	25	MR8-25	Thrust washer
3	MR8-03	Dust cap	26	MR8-26	NBR O-ring AS568-019 N70
4	MR8-04	Saddle	27	MR8-27	Turret bolt
10	MR8-10	Main housing	28	MR8-28	NBR O-ring AS568-012 N90
11	MR8-11	Diaphragm Lifter	29	MR8-29	H. P. plug
12	MR8-12	Diaphragm	30	MR8-30	NBR O-ring AS568-011 N70
13	MR8-13	Diaphragm washer	31	MR8-31	L. P. plug
14	MR8-14	Spring seat	32	MR8-32	Transmittor
15	MR8-15	Spring washer	33	MR8-33	Silicone Disk
16	MR8-16	Main spring	34	MR8-34	EN Cap
17N	MR8-17N	Diaphragm Clamp (Ice) - replace MR8-17			

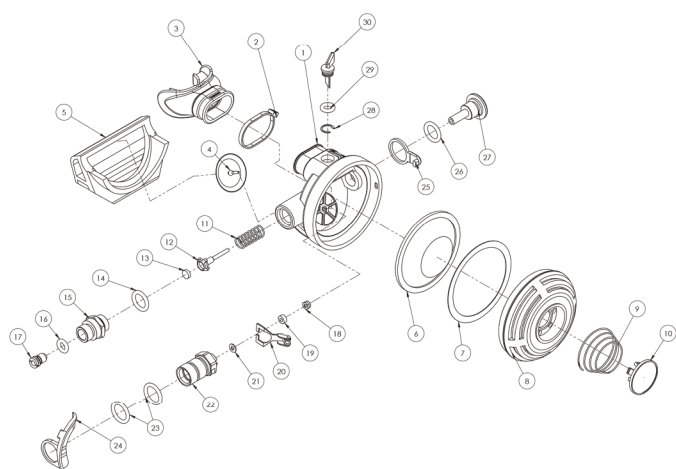
EXPLODED VIEWS & SERVICE KITS

R8N DIN/5 EXPLODED VIEW



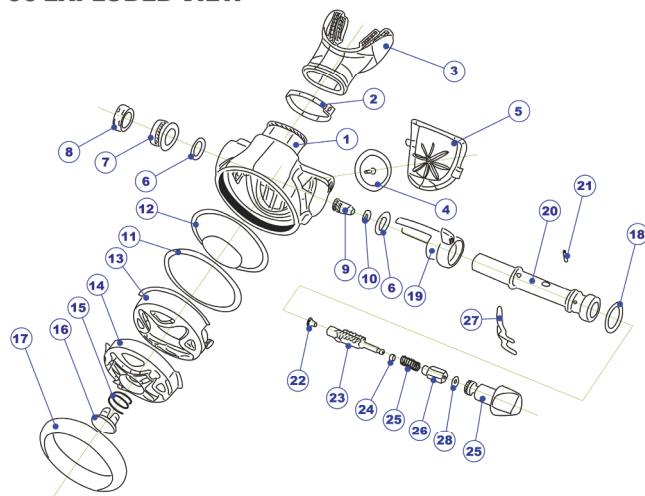
No.	Item No.	Description	No.	Item No.	Description
D1	MR8-D1	NBR O-ring AS568-112 N90	18	MR8-18	Adjust Screw
D2	MR8-D2	DIN Retainer	19	MR8-19	NBR O-ring AS568-024 N70
24	MR8-24	NBR O-ring AS568-013 N90	20	MR8-20	Turret
D3	MR8-D3	DIN filter	21	MR8-21	H. P. Seat
D4	MR8-D4	NBR O-ring S-8 N90	22	MR8-22	Valve Spring
D5	MR8-D5	DIN wheel	23	MR8-23	NBR O-ring AS568-006 N90
D6	MR8-D6	DIN housing	24	MR8-24	NBR O-ring AS568-013 N90
D7	MR8-D7	NBR O-ring 9.0X1.5 N90	25	MR8-25	Thrust washer
3	MR8-03	Dust cap	26	MR8-26	NBR O-ring AS568-019 N70
4	MR8-04	Saddle	27	MR8-27/5	Turret Bolt with 5th Port
10	MR8-10	Main housing	28	MR8-28	NBR O-ring AS568-012 N90
11	MR8-11	Diaphragm Lifter	29	MR8-29	H. P. plug
12	MR8-12	Diaphragm	30	MR8-30	NBR O-ring AS568-011 N70
13	MR8-13	Diaphragm washer	31	MR8-31	L. P. plug
14	MR8-14	Spring seat	32	MR8-32	Transmittor
15	MR8-15	Spring washer	33	MR8-33	Silicone Disk
16	MR8-16	Main spring	34	MR8-34	EN Cap
17N	MR8-17N	Diaphragm Clamp (Ice) - replace MR8-17			

O-50 EXPLODED VIEW



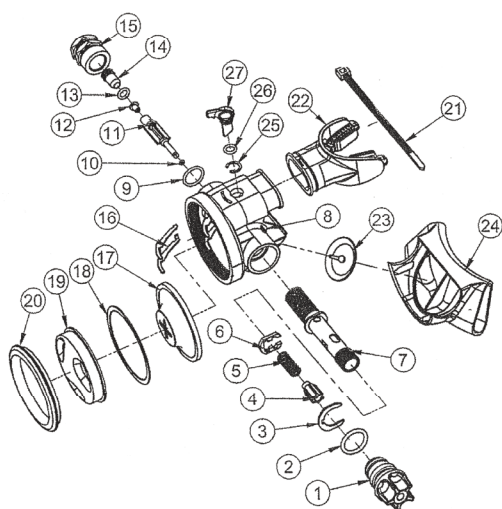
No.	Item No.	Description	No.	Item No.	Description
1	O5001	MAIN HOUSING	16	O5016	O-RING
2	-	ZIP TIE	17	O5017	ORIFICE
3	MP5BS	SILICONE MOUTHPIECE	18	O5018	NUT WITH NYLON INSERT
4	O5004	EXHAUST VALVE	19	O5019	SPACER
5	O5005	EXHAUST TEE	20	O5020	LEVER
6	O5006	DIAPHRAGM	21	O5021	SPACER
7	O5007	DIAPHRAGM WASHER	22	O5022	INLET TUBE
8	O5008	PURGE COVER	23	O5023	O-RING
9	O5009	PURGE SPRING	24	O5024	VENTURI VANE
10	O5010	PURGE BUTTON	25	O5025	LOCK RING
11	O5011	VALVE SPRING	26	O5026	O-RING
12	O5012	POPPET VALVE	27	O5027	SIDE PLUG
13	O5013	LOW PRESSURE SEAT	28	O5028	SS CLIP
14	O5014	O-RING	29	O5029	O-RING
15	O5015	NUT	30	O5030	DEFLECTOR

O-60 EXPLODED VIEW



No.	Item No.	Description	No.	Item No.	Description
1	O6001	MAIN HOUSING	16	O6016	PURGE BUTTON
2	-	ZIP TIE	17	O6017	ALUMINIUM RING
3	MP5BS	SILICONE MOUTHPIECE	18	O6018	O-RING
4	O6004	EXHAUST VALVE	19	O6019	PRE-DIVE / DIVE CONTROL
5	O6005	EXHAUST TEE	20	O6020	TUBE
6	O6006	O-RING	21	O6021	PIN
7	O6007	SPACER	22	O6022	L. P. SEAT
8	O6008	NUT	23	O6023	SHUTTLE
9	O6009	ORIFICE	24	O6024	O-RING
10	O6010	O-RING	25	O6025	SPRING
11	O6011	DIAPHRAGM WASHER	26	O6026	BALANCING CAP
12	O6012	DIAPHRAGM	27	O6027	LEVER
13	O6013	OUTER PURGE COVER	28	O6028	O-ring
14	O6014	INNER PURGE COVER	29	O6029	ADJUSTMENT KNOB
15	O6015	PURGE SPRING			

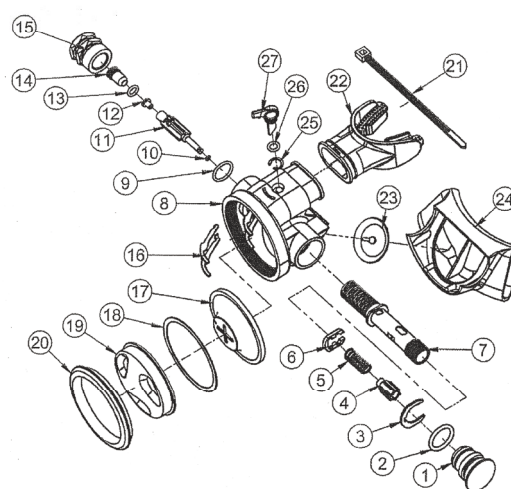
O-10 EXPLODED VIEW



No.	Item No.	Description
1	O1022	ADJUSTABLE KNOB (O10)
2	O1024	O-RING (knob)
3	O1020	STAINLESS STEEL CLIP
4	O1019	SHUTTLE BALANCE CAP
5	O1018	SPRING (O10)
6	O1012	LEVER SHIM
7	O1014	TUBE
8	O1004	MAIN HOUSING
9	O1003	O-RING (nut)
10	O1017	O-RING (shuttle)
11	O1016	SHUTTLE
12	O1015	LP SEAT
13	O1025	O-RING (orifice)
14	O1026	ORIFICE

No.	Item No.	Description
15	O1002	NUT
16	O1013	STAINLESS STEEL LEVER
17	O1008	DIAPHRAGM
18	O1009	DIAPHRAGM WASHER
19	IR1010	PURGE COVER (black)
20	O1011SV	ALUMINIUM RING (silver - octo)
21	-	ZIP TIE
22	MP5BS	MOUTHPIECE (bk silicone)
23	O1027	EXHAUST VALVE
24	O1028	EXHAUST COVER
25	O1030	DEFLECTOR CLIP
26	O1031	O-RING (deflector)
27	O1032	DEFLECTOR

O-20 EXPLODED VIEW

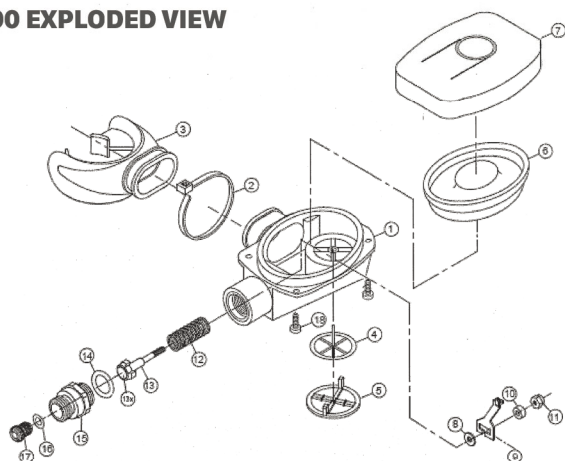


No.	Item No.	Description
1	O2022	SIDE PLUG
2	O1024	O-RING (knob)
3	O1020	STAINLESS STEEL CLIP
4	O1019	SHUTTLE BALANCE CAP
5	O2018	SPRING
6	O1012	LEVER SHIM
7	O1014	TUBE
8	O1004	MAIN HOUSING
9	O1003	O-RING (nut)
10	O1017	O-RING (shuttle)
11	O1016	SHUTTLE
12	O1015	LP SEAT
13	O1025	O-RING (orifice)
14	O1026	ORIFICE

No.	Item No.	Description
15	O1002	NUT
16	O1013	STAINLESS STEEL LEVER
17	O1008	DIAPHRAGM
18	O1009	DIAPHRAGM WASHER
19	IR1010	PURGE COVER (black)
20	O1011SV	ALUMINIUM RING (silver - octo)
21	-	ZIP TIE
22	MP5BS	MOUTHPIECE (bk silicone)
23	O1027	EXHAUST VALVE
24	O1028	EXHAUST COVER
25	O1030	DEFLECTOR CLIP
26	O1031	O-RING (deflector)
27	O1032	DEFLECTOR

EXPLODED VIEWS & SERVICE KITS

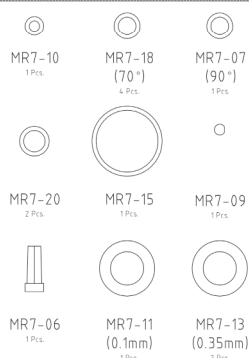
O-6000 EXPLODED VIEW



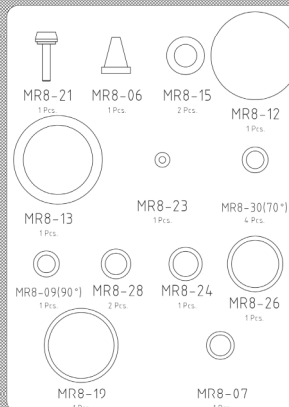
No.	Item No.	Description
1	9501	MAIN HOUSING
2	9502	ZIP TIE
3	MP1	SILICONE MOUTHPIECE
4	9504	EXHAUST VALVE
5	9505	EXHAUST COVER
6	9506	DIAPHRAGM
7	9507	FRONT COVER
8	9508	PLASTIC WASHER
9	9509	LEVER ARM
10	9510	PLASTIC SPACER
11	9511	STAINLESS SCREW WITH NYLON
12	9512	MAIN SPRING
13	9513	POPPET VALVE
13X	9513X	L.P. SEAT
14	9514	NBR O-RING AS568-906 N70
15	9515	ORIFICE SEAT SCREW
16	9516	NBR O-RING AS568-010 N70
17	9517	ORIFICE SEAT SCREW
18	9518	STAINLESS SCREW X 4PCS

EXPLODED VIEWS & SERVICE KITS

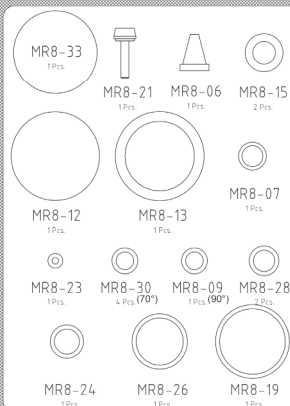
R-7 SERVICE KIT (MR7-100)



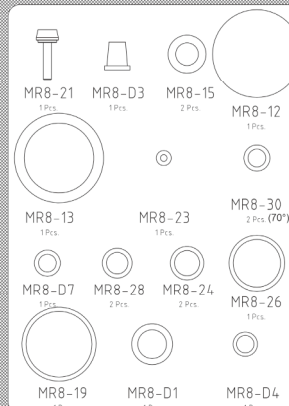
R-8 SERVICE KIT (MR8-100)



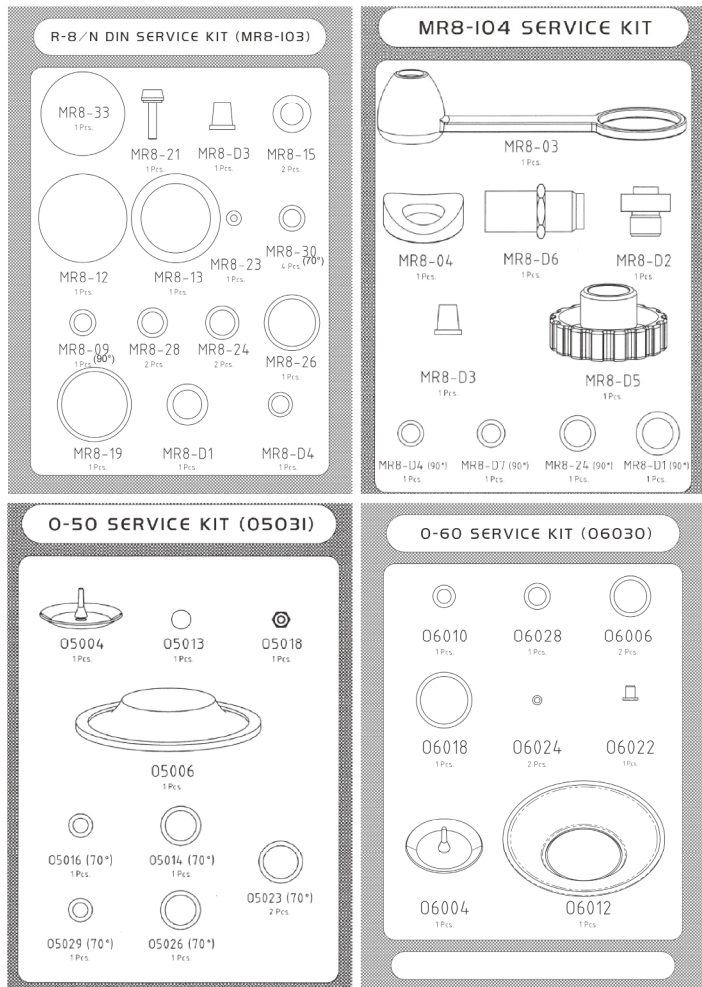
R-8/N SERVICE KIT (MR8-101)



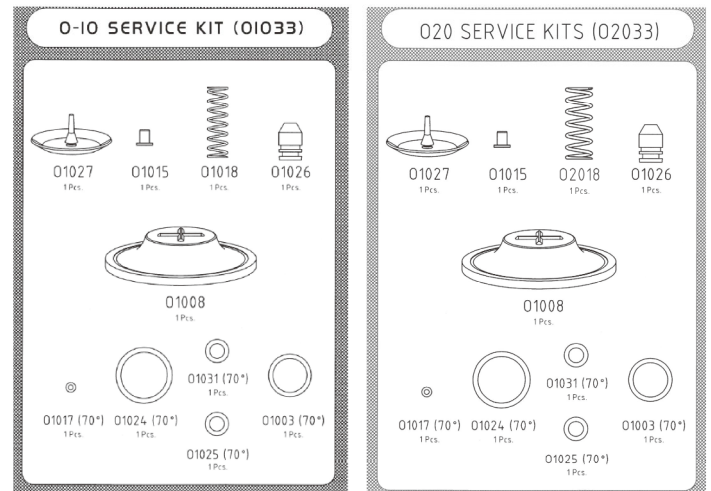
R-8 DIN SERVICE KIT (MR8-102)



EXPLODED VIEWS & SERVICE KITS

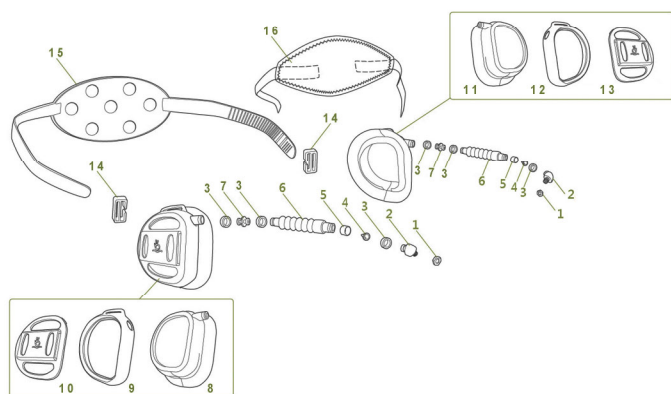


EXPLODED VIEWS & SERVICE KITS



EXPLODED VIEWS & SERVICE KITS

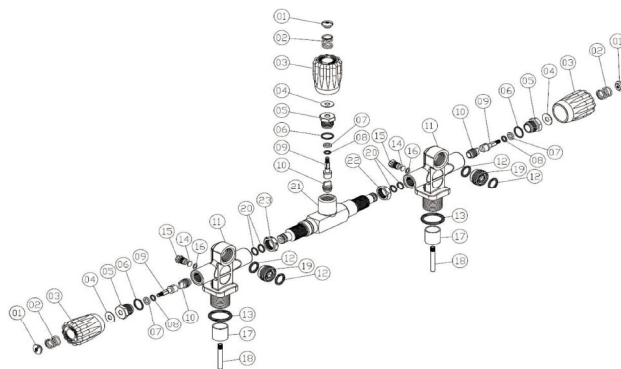
PROEAR EXPLODED VIEW



No.	Item No.	Description
1	6710	NUT
2	6709	SKIRT TAP
3	6707	COLLAR
4	6708	DUCK VALVE
5	6713	VALVE CASE
6	6714	TUBING
7	6712	CONNECTOR
8	6701	EAR CAP-R
9	6703	EAR CAP FRAME-R
10	6705	EAR CAP F. COVER-R
11	6702	EAR CAP-L
12	6704	EAR CAP FRAME-L
13	6706	EAR CAP F. COVER-L
14	SF	MASK STRAP RETAINER
15	MS80	SILICONE MASK STRAP
16	MS16	NEOPRENE MASK STRAP

EXPLODED VIEWS & SERVICE KITS

TANK VALVE TWIN EXPLODED VIEW



No.	Item No.	Description
1	MVLV-01	HAND WHEEL NUT
2	MVLV-02	HAND WHEEL SPRING
3	TK-1	HAND WHEEL
4	MVLV-04	WASHER
5	MVLV-05	BONNET NUT
6	MVLV-06	NBR O-RING 14 X 1.78 N90
7	MVLV-07	SPACER
8	MVLV-08	NBR O-RING 6.07 X 1.78 N90
9	MVLV-09	STEM
10	MVLV-10	H.P. SEAT
11	MVLV-11	VALVE BODY
12	YK-04-01	NBR O-RING 12.37 X 2.62 N90
13	MVLV-13	NBR O-RING 25 X 3.53 N90
14	MVLV-14	BURST DISK
15	MVLV-15	BURST DISK PLUG
16	MVLV-16	BURST DISK WASHER
17	MVLV-17	TUBE
18	MVLV-18	TUBE
19	YK04-02	DIN TO YOKE CONVERTER
20	MVLV-20	NBR O-RING 9.25 X 1.78 N90
21	MVLV-21	MANIFOLD BODY
22	MVLV-22	LEFT MANIFOLD NUT
23	MVLV-23	RIGHT MANIFOLD NUT



DOLPHIN TECH



Printed in Taiwan

www.istsports.com