



**GET READY
DIVE WITH US!**



IST SPORTS COLLECTION

2023 - 2024

DOLPHIN TECH



www.istsports.com

Printed in Taiwan

START OUR STORY

FOUNDED 1976

Company founded in Taiwan. Siblings Irene, Stanley and Tony Lin join together to form IST. Named after their combined initials, the company symbolized a community effort to work together toward a better future. When IST was first established, their primary products were windsurfing boards. As a pioneer in the market, they produced great quality at more affordable prices, earning high praise from their new customer base.

1987

"IST Proline" and the iconic IST dolphin logo were both established and IST continued to broaden their production of diving equipment. In the same year, the California branch was set up, marking their entrance into the U.S. diving market.

1988

Manufactured IST's first regulator and BCD in the U.S.

1989

Released the M37 Pegasus for cold-water and commercial diving. Released the F12 Sea Diver rubber fin.

1991

Opened a wetsuit manufacturing factory in China.

1992

Partnered with Sea&Sea to open IST U.K. Introduced the first sneaker-sole boot to the diving market.

1996

Manufactured IST's first dive computer in Finland.

1997 - 1999

Manufactured IST's first dry suit in UK. Co-invented the underwater Sonic Seeker in Australia.

2000

Collaborated with Nature's Wing to introduce the F2 Talaria fin and Pegasus F10 to the market. Developed and patented the ProEar dive mask.

2005

Introduced camouflage patterns and the 3-piece wetsuit. Introduced aluminum-frame mask.

2008

Opened Dolphin Tech and began producing technical diving equipment.

2012

Released a broad range of commercial diving equipment under Dolphin Tech. Developed line of freediving equipment.

2015

Introduced side-mount BCD under Dolphin Tech.

2020

Developed line of freediving equipment.

2022

IST now sells to more than 121 countries worldwide.



**SCUBALAB
TESTERS
CHOICE™**

2 0 2 1

PG-WS80

IST'S SIGNATURE JUMPSUIT, CONSTRUCTED OF HIGH-GRADE NEOPRENE IN 1.5MM, 3MM, 5MM AND 7MM THICKNESS OPTIONS. MADE FROM PURIGUARD ANTIBACTERIAL FABRIC.

TABLE OF CONTENT

HARD GEAR

BCD	PG. 06-08
REGULATORS	PG. 09-12
GAUGE & CHECKER	PG. 13-14
HOSE	PG. 15
BCD ACCESSORIES	PG. 16
GAUGE ACCESSORIES	PG. 17-18
TANK ACCESSORIES	PG. 19
HOSE ACCESSORIES	PG. 19
CONNECTOR & ADAPTER	PG. 20

SOFT GEAR

MASK	PG. 21-30
PROEAR MASK	PG. 32-33
SNORKEL	PG. 34-36
FIN	PG. 37-41
COMBO SET	PG. 42-43
MASK ACCESSORIES	PG. 44-45
PROEARMASK ACCESSORIES	PG. 44-45
SNORKEL ACCESSORIES	PG. 46
FIN ACCESSORIES	PG. 46-47

NEOPRENE GEAR

PURIGUARD	PG. 48-55
ICOOL	PG. 54-55
NEOPRENE GEAR	PG. 56-58
GLOVES	PG. 56-58
SOCKS	PG. 59
BOOTS	PG. 60-62
NEOPRENE ACCESSORIES	PG. 63

WATERSPORTS GEAR

BEACH PONCHO	PG. 64
DIVE SKIN	PG. 64
SUNSCREEN	PG. 65
LOGO WEAR	PG. 66
HAT	PG. 67
SNORKELING VEST	PG. 68
SWIMMING GEAR	PG. 69
COAT	PG. 70

YOUTH GEAR

MASK	PG. 71
SNORKEL	PG. 72
FIN	PG. 73
NEOPRENE GEAR / RASHGUARD	PG. 74-75
COMBO SET	PG. 76-77

FREEDIVING GEAR

MASK	PG. 78-79
SNORKEL	PG. 80
FIN	PG. 81
NEOPRENE GEAR	PG. 82-84
HAT	PG. 84
FREEDIVING BUOY ACCESSORIES	PG. 85-86
	PG. 87

RENTAL GEAR

BCD	PG. 88
REGULATORS	PG. 89
MASK	PG. 89-90
SNORKEL	PG. 90
FIN	PG. 90
NEOPRENE GEAR	PG. 91
BOOTS	PG. 91

HUKA

HUKA	PG. 92-93
------	-----------

TECHNICAL DIVING GEAR

TECHNICAL BCD COMPONENTS	PG. 94-97
TECH DIVING GEAR	PG. 98-105
TANK VALVES	PG. 106-107
COMMERCIAL DIVING	PG. 108-109

ACCESSORIES

TORCHES	PG. 110-111
BAGS	PG. 112-115
KNIVES	PG. 116-117
REELS	PG. 118
BUOY	PG. 119
WRITING SLATE	PG. 120-121
MOUTHPIECE	PG. 122
SIGNALING DEVICES	PG. 123
WEIGHT ACCESSORIES	PG. 124-125
ARROWS	PG. 126
DRIFT HOOK	PG. 126
CLIPS & LANYARD	PG. 127-129
KEY CHAIN	PG. 127
DIVE FLAG	PG. 127

DELTA

J-1900/E

ONE SIZE FIT MOST

Features include:

- 331bf(147N) back inflated bladder
 - Stainless steel D-rings, 2 on Shoulder, and 2 on waist Harness
 - Reshaped and upgraded bladder provides better control of buoyancy and keeps divers at vertical position at the surface
 - K style power inflator with pull dump
 - 16" Military grade corrugated rubber inflation hose
 - 2 quick-release weight pockets; Max. load 4kg(8.8lb) each
 - **ONE SIZE FITS MOST**
- CE APPROVED



Side View



B



P



Stainless steel Dring



BK



K style power inflator with pull dump

Mercury

J-1700

Features include:

- Durable 420D TPU coated Nylon shell.
 - Cold water capable power inflator (IF-1700/N) with pull dump.
 - 2 additional rear quick dump valves.
 - Adjustable sternum strap.
 - 2 rear trim pockets take up to 1kg (2.2lb) of weight each.
 - 2 integrated weight pockets (4kg each).
 - Padded backpack.
 - All new designed waterproof dump valves that prevent water from entering the bladder when deflate.
 - Traditional jacket style BCD
- CE APPROVED



Cold Water Capable Power Inflator IF-1700/N



Integrated Weight Pockets



2 additional rear quick dump valves



Waterproof Dump Valve



Rear Weight Pockets

SIZES	Buoyancy	Chest(cm/inch)	Waist (cm/inch)
XS	120N(11.8kgf/26lbf)	66-91/26"-36"	64-81/25"-32"
S	140N(14.1kgf/31lbf)	76-102/30"-40"	74-91/29"-36"
M	170N(17.2kgf/38lbf)	87-112/34"-44"	84-102/33"-40"
L	220N(22.2kgf/49lbf)	97-122/38"-48"	94-112/37"-44"
XL	270N(27.2kgf/60lbf)	102-127/40"-50"	104-122/41"-48"

**J800-1000D****Features include:**

- Simple yet traditional jacket style BCD
- Tough 1000D cordura.
- Cold water capable power inflator with pull dump.
- 2 additional rear quick air dump valve.
- Adjustable sternum strap.
- Strong and lightweight delrin D-rings.
- 2 roomy side pockets with Velcro closure
- Padded backpack.

CE APPROVED

Waterproof
Dump ValveCold Water Capable
Power Inflator IF-1700/N2 additional rear quick
dump valves

SIZES	Buoyancy	Chest(cm/inch)	Waist (cm/inch)
XXS	70N(6.8kgf/15lbf)	66-91/26"-36"	64-81/25"-32"
XS	120N(11.8kgf/26lbf)	66-91/26"-36"	64-81/25"-32"
S	140N(14.1kgf/31lbf)	76-102/30"-40"	74-91/29"-36"
M	170N(17.2kgf/38lbf)	87-112/34"-44"	84-102/33"-40"
L	220N(22.2kgf/49lbf)	97-122/38"-48"	94-112/37"-44"
XL	270N(27.2kgf/60lbf)	102-127/40"-50"	104-122/41"-48"

IF-0**INFLATOR OCTOPUS**

IST's high-performance second stage regulator combined with power inflator. IF-0 is set in front of you, unlike a traditional octopus, and can be reached at any time when emergency.

- Coupled with our high-spec, large bore intermediate pressure hose. Max. service pressure @34.5bar (500psi).
- Ultra soft front cover allows you to reach the purge button easily.
- Cracking pressure setting @1.4 - 1.6 inch of water.
- Max. service intermediate pressure @10bar (145psi).
- Designed to fit 3/4" rubber inflator corrugated hose.

**IFO-38A****ADAPTOR**

Adapter for IST IF-0 inflator octopus with 1" corrugated hose



R-860 R-860/N-5 R-860/N-DIN/5**FLAGSHIP DIAPHRAGM REGULATOR**

This latest regulator from IST is not only feature-packed and capable of handling a high work load, it can also be used in both warm and cold water conditions.

CE APPROVED

**R-8****BALANCED DIAPHRAGM 1ST STAGE**

- The R-8 balanced diaphragm 1st stage has a high-flow, fast-acting valve system that is capable of delivering large amount of breathing gas in an instant, irrespective breathing demand, cylinder pressure or depth. It has not only passed the stringent CE test but the performance is comparable with the best available
- 4 intermediate pressure ports (located in the swivel turret) and 2 high pressure ports
- Available with Yoke or 300 bar DIN (G5/8) connector
- Anti-freeze models are available separately
- Inter. pressure setting @ 206 bar (3000psi): 3820L/min (135cuft/min)

**R8/5-N R8/N-DIN/5****BALANCED DIAPHRAGM 1ST STAGE WITH 5TH PORT**

- Extension design from IST R-8 balanced diaphragm 1st stage with an additional intermediate pressure port (5 ports in total)
- Also available in DIN (G5/8) connector. (Only anti-freeze model)

O-60**BALANCED 2ND STAGE**

- The O-60 second stage is equipped with a metal balancing tube and an adjustment knob. They are able to meet heavy breathing demand with ease and in extremely cold water they also act as heat sink to prevent icing.
- The volume of air leaving the valve can be fine-tuned by the adjustment knob on the side of the O-60 at any time so the diver can choose to breathe conservatively, or to open the valve up for more air in physical demanding situations.
- The pre-dive/ dive switch next to the adjustment knob prevents the valve from free-flowing while on the surface.
- The second stage comes with our high-spec, large bore intermediate pressure hose (max. service pressure @ 34.5 bar/ 500psi) which flows sufficient breathing air even when the demand is heavy.
- Cracking pressure setting @ 0.8 - 1.2 inch of water
- Flow rate @ 206 bar (3000psi): 30_ cuft/ min
- Max service intermediate pressure @ 10 bar (145psi)

**R-750****FLOW-THROUGH PISTON REGULATOR**

- IST's R-750 was designed and developed with reliability as main priority. It is simple to use and easy to service. The proven technology used means with proper care and maintenance, it gives years of trouble-free diving.
 - For use in waters warmer than 10 °C
- CE APPROVED

**R-7****FLOW-THROUGH PISTON 1ST STAGE**

- Piston technology has been used in SCUBA for many years; this 1st stage can handle lots of abuse and is easy for technicians to service.
- Available with Yoke 200 bar.
- Inter. pressure setting @ 9.5-10.0 bar (137-145psi) Ventilation rate @ 206 bar (3000psi): 3110L/min (110 cuft/ min.)
- 4 intermediate pressure ports and 1 high pressure port.

**O-50****DOWN-STREAM 2ND STAGE**

- Reliable and robust, the O-50 uses the time-proven, easy to service down-stream valve. Coupled with our high-spec, large bore intermediate pressure hose (max. service pressure @ 34.5 bar/ 500psi), it flows more than enough air even when breathing demand is high
- The light-action purge button is easy to access
- The pre-dive/ dive switch atop the second stage housing prevents free-flow while the diver is on the surface
- Cracking pressure setting @ 1.2 inch of water
- Flow rate @ 206 bar (3000psi): 30 cuft/ min
- Max service intermediate pressure @ 10 bar (145psi)



O-50**NON-ADJUSTABLE OCTOPUS**

- Reliable & robust, this octopus is simple to use and easy to service.
- Comes with 90cm (36") long intermediate pressure hose.
- Cracking pressure setting @ 1.2 inch of water.
- Flow rate @ 206 bar (3000psi): 30+ cuft / min
- Max service intermediate pressure @ 10 bar (145psi)



BK



NY

O-60**ADJUSTABLE OCTOPUS**

- Ease of breathing is achieved by a purposely shaped housing interior, which is designed to create a pressure drop in the area just before the mouth-piece. This means air gets pulled towards the diver's mouth directly after leaving the valve.
- The pre-dive / dive switch next to the adjustment knob prevents the valve from free-flowing while on the surface.
- The second stage comes with our high-spec, large bore intermediate pressure hose (max. service pressure @ 34.5 bar / 500psi) which flows sufficient breathing air even when the demand is heavy.



W/PB



W/P



BK



NY

O-10**ADJUSTABLE OCTOPUS**

- Built-in heat exchanger
- Special designed adjustable vane can either direct air smoothly for effortless breathing or to deflect flow movement for gas conserving mode.
- Exhaust cover with curvature which directs bubbles away from field of vision
- Comes with high quality 90 cm (36") LP hose.



BK

GP-9200**TRIPLE GAUGE CONSOLE**

- Standard pressure gauge, depth gauge and compass.
- Large gauge face is easy to read.
- Max. Depth rating: 80M (262ft)
- Max. pressure reading: 300 bar (or 5000 PSI)
- Standard 30" (76cm) high-pressure hose included.
- Available in Metric and Imperial readings (sold separately).

CE APPROVED

**GP-500****MINI TRIPLE GAUGE CONSOLE**

- Mini pressure gauge and depth gauge console with the compass located on the reverse side.
- Large compass with bezel and side window for easy reading.
- Maximum depth reading: 60m (200ft)
- Maximum pressure reading: 400 bar (or 5000psi)
- Glow in the dark gauge faces.
- Available in Metric and Imperial readings (sold separately).

CE APPROVED



W

BK

GP-600**MINI TWO GAUGE CONSOLE**

- Same features as GP-500 with a mini writing slate at the back instead of the compass.
- Available in Metric and Imperial readings (sold separately).

CE APPROVED



W

BK

GP-16/ GP16-OX**PONY BOTTLE GAUGE**

- Small and compact, measures 1.8cm (0.7") wide and weighs 40g (1.40oz)
- Glow in the dark gauge faces.
- Maximum pressure 350 bar (or 5000psi)
- GP16-OX for nitrox divers.



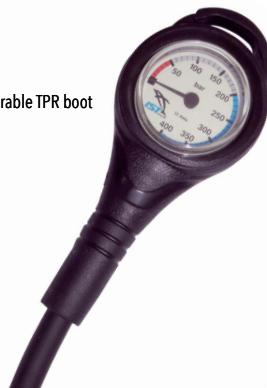
GP-16



GP16-OX

GP-15**MINI SPG**

- Super low profile, lightweight pressure gauge encased in durable TPR boot
- Luminous dial face
- Maximum pressure reading: 400bar (or 5000psi)
- Dial face Ø 5cm (2")
- CE APPROVED

**CT-1/N**

- DIN tank pressure checker (300 bar, G 5/8)

**CT-2/N**

- Yoke tank pressure checker

**CT-3**

- Intermediate pressure checker (BC hose connector)

**GP-23****WRIST COMPASS**

- Bezel with side window for easy reading
- Luminous face
- Durable boot with strap

**CT-6**

- 2nd stage in-line adjustment tool with intermediate pressure gauge

**LOW PRESSURE HOSE****QUICK CONNECT BC HOSE**

RUBBER			
PART#	DESCRIPTION	LENGTH	COLOR
HP - 6IN	Stage Bottle High Pressure	15cm(6")	●
HP - 24in	SPG High Pressure	61(24")	●
HP		76(30")	●
LP - 22in/BC	Quick Connect Low Pressure	56(22")	●
LP - BC		69cm(27")	●
LP - 22in	Regulator Low Pressure	56(cm22")	● ● ●
LP - 1		69cm(27")	● ● ●
LP-OCTO		90cm(36")	● ● ●
LP - 40in		100cm(40")	● ● ●
LP - 5ft		152cm(5')	● ● ●
LP - 7ft		213cm(7')	● ● ●

**BRAIDED
LOW PRESSURE HOSE****BRAIDED
QUICK CONNECT BC HOSE**

BRAIDED			
PART#	DESCRIPTION	LENGTH	COLOR
LP - BC/MF	Quick Connect Low Pressure	69cm(27")	●
LP - 1/MF	Regulator Low Pressure	69cm(27")	●
LP - OCTO/MF		90cm(36")	●

BP1-1**BACK PACK**

Classic diving backpack with tank bands and high quality webbing set. (304 S.S. cam buckle)

**BP2/S****STEEL CAM BUCKLE CYLINDER BAND**

The cam buckle is made from 316 stainless steel. It is high in tensile strength and is resistant to corrosion. This cylinder band is a great upgrade from our standard BP2. Fits cylinder with outside diameter from 183mm (7.25") to 203mm (8").

**BP2/I****TANK STRAP**

The strong, lightweight cam buckle can withstand rigorous use. Supple 2"(5 cm) webbing makes threading an easy task. Fits tanks with diameter from 175mm(6.9") to 203mm(8")

**OPRV-1**

- Adjustable 1st stage over pressure valve.
- Pressure releases from 11.7 bar (170 PSI) up.

**ON-1****OCTOPUS NECKLACE**

- Material: Silicone
- Worn around the neck so the octopus can be quickly located in an emergency.



SIZES	CIRCUMFERENCE
S	60cm (23.5")
M	72cm (28.3")
L	80cm (31.5")

DC-2P**1ST STAGE PLASTIC DIN DUST COVER****MPC****OCTOPUS COVER**

- 2nd stage/ octopus mouthpiece cover.
- Can be used as an octopus holder.
- Can be used with a variety of mouthpieces.

**SFP-1****OCTOPUS PLUG****SFP-2****OCTOPUS PLUG****HPSW1****HIGH PRESSURE HOSE SWIVEL SPOOL**

- Shouldered air spool.

**HPSW2****HIGH PRESSURE HOSE SWIVEL SPOOL**

- Standard air spool.

**HPSW3****HIGH PRESSURE HOSE SWIVEL SPOOL**

- Long air spool.

**DT-2/A****DIVER'S TOOL KIT**

- Handy tool kit for convenient and quick maintenance of diving equipment.
- It contains:

Knife	x1
5" long osee pliers	x1
Awl	x1
1/4" sockets: 4mm, 4.5mm	x2
Assorted screwdriver bits	x7
6" adjustable spanner	x2
Cable tie	x4
1/4" drive	x1
Allen key: 4mm, 5mm, 6mm, 3/16"	x4
1/4" adapter	x4

**DT-5**

- Overall length: 6cm(2.35") when folded
- It contains:

Allen key: (1/4", 3/16" 5/32")	x3
O-ring pick	x1
Phillips screwdriver	x1
Orifice adjustment flat screwdriver	x1
Inflator Schrader valve tool	x1
Valve nut slotted screwdriver	x1

**DT-6****YOKE TOOL FOR R-7 1ST STAGE****DT-7****YOKE TOOL FOR R-8 1ST STAGE****DT-4****TECHNICIAN'S TOOL KIT**

Allen key: (4mm, 5mm, 6mm, 8mm, 3/16")	x5	Pointed C-clip pliers	x1
Adjustable spanner	x1	Awl	x1
Phillips screwdriver	x1	Zip ties	x5
Flat screwdriver	x1	Knife	x1
2nd stage 4 slot tool	x1	O-ring hooks	x3
2nd stage orifice adjustment tool	x1	Silicone grease	x1
1st stage pin spanner	x1	BCD low-pressure hose valve tool	x1
1st stage face tool	x1	Tank valve knob screw driver	x1
1st stage handle: connect to low-pressure port and high-pressure port	x1		
O-rings for: 1st stage LP port/ 1st stage HP port/ 2nd stage LP hose/ BCD LP hose valve/ Yoke or DIN tank valve			



DT4-01**ALLEN KEYS**

4mm, 5mm, 6mm, 8mm, 3/16"

**DT4-02****TANK VALVE KNOB SCREWDRIVER****DT4-05****2ND STAGE 4 SLOT TOOL****DT4-07****1ST STAGE REGULATOR PIN SPANNER****DT4-08****1ST STAGE REGULATOR HANDLE**

To connect to low-pressure port or high-pressure port and helps divers to handle the 1st stage steady when doing maintenance

**SGT-2****SILICONE GREASE**

- 60g(2.12oz) silicone grease.
- Large volume for shop use.

**SGT-4****SILICONE GREASE**

- 15g (0.53oz) silicone grease tube

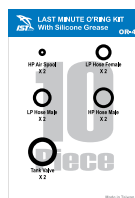
**SGT-5****SILICONE SPRAY**

- 250ml(8.5oz)
- For lubrication on O-rings or any other product

**OR-4****10PCS DIVER'S O-RING KIT**

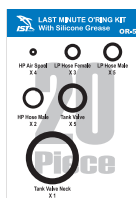
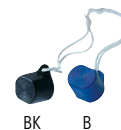
- Contains:

SPG swivel spool O-rings	x2
Low pressure hose female O-rings	x2
Low pressure hose male O-rings	x2
High pressure hose male O-rings	x2
Tank valve (YOKE) O-rings	x2
Silicone grease (2g)	x1

**OR-5****20PCS DIVER'S O-RING KIT**

- Contains:

SPG swivel spool O-rings	x4
Low pressure hose female O-rings	x3
Low pressure hose male O-rings	x5
High pressure hose male O-rings	x2
Tank valve (YOKE) O-rings	x5
Tank O-ring (neck)	x1
Silicone grease (2g)	x1

**VP-3****YOKE VALVE DUST COVER****VP-4****DIN VALVE PLASTIC CAP****TK-1****TANK KNOB**

- Material: Rubber
- Available in black or green to signify Nitrox / Oxygen tanks.

**TP-1****TANK PROTECTIVE MESH**

- Prevents much of the scuffing on tank surface.
- Fits tank with diameter between 17.5cm(6.9") and 18.4cm(7.25")

**BCHH-3**

- Overall Length: 11.5cm (4.5")
- 3 hose holders with clip.

**HP-2****HOSE PROTECTOR**

- Prevents hose being kinked at the base.

Base Diameter	
HP-2	Ø1.4cm (Ø0.55")

**TH-1****TANK CARRYING HANDLE**

Inside diameter: 3.9cm(1.5")

**SBR-2**

(FOR TANK 7" - 7.25")

SBR2-1

(FOR TANK 5.25")

STAGE BOTTLE RIGGINGS**TB-1****PLASTIC TANK BOOT**

- Fits tank with Ø18.4cm(7.25")
- Drainage channels and holes.

**TB-2****RUBBER TANK BOOT**

- Fits tank with Ø18.4cm(7.25")
- Drainage channels and holes.

**BCHH****HOSE HOLDER**

Can be clip on to D-rings to arrange hose in a tidy manner and reduce drag.

**HP-4****HOSE PROTECTOR**

- Larger caliber base easy installation.

Inside Diameter	
Base	Ø1.8cm (Ø0.71")
Top	Ø1.2cm (Ø0.47")



BK

YK-03

- DIN to Yoke 1st stage converter – for either 200 or 300 bar (G 5/8) DIN connectors

**YK-04**

- DIN to Yoke tank valve converter – for tanks with 200 bar DIN outlet (G 5/8) only

**N-1**

- Air nozzle with BC hose connector
- For land use only!

**N-5**

- Stainless air nozzle
- For land use only!

**N-6**

- Tire inflator

**N-7**

- 2nd stage swivel

**N-8**

- Copper chrome plating covered by aluminum alloy.
- QD connector design for BC hose.
- With this inflator, FD-IT/15 inner tire can be fully inflated in 15 seconds.

**RA-2**

- Adapter: 1/2" male to 3/8" female

**RA-6**

- 1st stage 110° adapter changes the angle the intermediate pressure hose leaving the 1st stage for better hose routing and streamlining purpose

**RA-8**

- Additional low-pressure port available on your regulator's 1st stage.
- One 3/8" male to two 3/8" female outlets.
- Allows 360° swivel.

**RA-9**

- 1st stage 90° adapter changes the angle of the high pressure hose leaving the 1st stage for better hose routing and streamlining purpose.
- Allows 360° swivel.
- 7/16" male to 7/16" female



Anti-Fog Lens

ANTI-FOG LENS FILM

Foggy Mask Lens is a common problem and a very annoying situation for every diver. The anti-fog spray may temporarily solve the problem, but it has to be applied on each dive. IST's newest technology in Anti-Fog Lens Film makes you no longer have foggy mask problems! Prior to the first time using, simply remove the matte protective film inside of the mask. Rinse with water before each dive for a better experience. Treat with care, avoid of cut, scratch and high temperature. Clean with fresh water instead of detergent and cleanser

MP-201/AF**PROTEUS****M-55/AF****CORONA****MP-203/AF****HUNTER****ME55/AF****PROEAR MASK****M-75/AF**

MP-210**NEW****SONIC**

- Extreme Low volume Frameless mask
- Made from hypoallergenic liquid silicone
- Perfect design for SCUBA and Free diving
- Available color: BS , W



W



BS



- Extreme low volume but with deep nose space for more comfortable fits.



- Buckle attached on Skirt for more flexible without fragile parts.
- Engrave lines on top for easier clutch.

MP-203**MP-203/AF****HUNTER**

- Extremely low volume design.
- Swivel and easy-adjust buckles.
- Ideal for hunters and photographers.
- The highest grade silicone available for a soft comfortable seal.
- Perfect as a spearfishing, free diving or back-up mask as it folds and fits easily in your BCD pocket.
- Tempered glass for safety and durability.
- Non-polish finished mask skirt prevents from reflecting of sunlight.
- **Anti-fog lens available.**



W



C



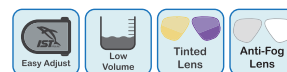
BK



MB

MP-201**MP-201/AF****PROTEUS**

- Comes with tinted lenses to enhance underwater colors
- Metal-Like painting technology for more colors of choice
- Super low volume design makes this mask become the best choice for free diving
- **Anti-fog lens available.**



CB



BS/BK



W/PR



BSM-BK/Y

Grey lens with mirror reflection



BSM-SV/R

Blue lens with orange reflection

M-88**BLUETECH**

The bendable buckles are attached to the stretchy hypoallergenic silicone skirt so they will not interfere with fitting and this feature enables the mask to be packed into tight luggage space while preparing for a trip.



BS/BK



W/MK



CB



W/P



W/NY

M-55**M-55/AF****CORONA**

Corona has been one of the most popular IST masks and its superior fitting and comfort are the reasons behind the success. Its swivel buckle allows the diver to adjust the mask to the most desirable position. The low internal volume gives unrestricted view.

- **Anti-fog lens available.**

OL55/OL55M

- Optical lenses are available in -1.0 to -8.0 in -0.5 decrement (also for tinted lens)
- +1.0 to +4.0 in +0.5 increment (not available for tinted lens)
- Left / Right or tinted optical lenses are interchangeable.

OL55/S

- Optical lens stickers at the bottom of the lens for ME55 and M-55 masks. Available in diopter from +1.0 to +4.0 in 0.5 increment.
- Left / Right lenses are NOT interchangeable.



B



BK



NY



BS



BS/CH

The latest chrome plating technology gives Corona mask a refreshing outlook

M-100**PANORAMA**

Panorama is the original IST **metal mask**.

By using lightweight and robust 6000 series aluminum, this mask is possibly the strongest on the market today. The frame measures only 8.1mm (0.32") in thickness and the bridge area is merely 7.3mm (0.29") in width.



SV



BK



HP



BS/BK



BS/G



BS/HP



BS/SV



BS/T



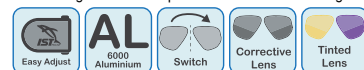
T

M-200**SYNTHESIS**

By combining CNC and plastic injection construction methods, the Synthesis uses the same **aluminum** as the Panorama to give the mask its stout base to support the twin-colored sub frame.

OL80

- Optical lenses are available in -1.0 to -8.0 in -0.5 decrement (also for tinted lens)
- +1.0 to +4.0 in +0.5 increment (not available for tinted lens)
- Left / Right or tinted optical lenses are interchangeable.



CB



BS/BK



BS/R



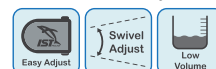
BS/CB



BK

MP-208**ATUM**

- Frameless twin lens mask made from hypoallergenic liquid silicone
- Low interior volume design
- Perfect for free diving



BS

M-30**DRAGO**

The mask's buckles are directly attached to the skirt and this makes DRAGO extremely comfortable to wear. The minimalistic construction ensures durability and well-suited for rental use.

- Comes with tinted lenses to enhance underwater colors
- Using latest painting and e-plating technology on this classic mask to give it a new life!

OL2/OL2M

- Optical lenses for M-30 DRAGO are available in diopter from -1.0 to -8.0 in -0.5 decrement.
- Left / Right or tinted optical lenses are interchangeable.



BS/PR



BK



NY



B



BS/BK



BS/CH



BS/GN

M-75**M-75/AF****MARTINIQUE**

The colorful Martinique has a twin-injection sub frame that gives this mask a modern appearance. The comfortable, high quality hypoallergenic silicone skirt fits a wide range of facial shapes with an assuring seal.



MT



W



CB



PR



CT



HP



BS



NY

M75-1**MARTINIQUE NARROW**

W/P



NY



CB



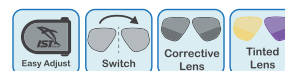
W/PB

M-80**SEARCH**

Low in profile and internal volume, Search's swivel buckle can be adjusted to suit each diver's preferences. The mask is well suited to people with slightly narrower face.

OL80

- Optical lens are available in -1.0 to -8.0 in -0.5 decrement (also for tinted lens)
- +1.0 to +4.0 in +0.5 increment (not available for tinted lens)
- Left / Right lenses are interchangeable.



06

CB

M-9**SATURN**

An old favorite with quality silicone skirt designed to fit wide range of facial profiles. Optical lenses can be easily installed TOOL-FREE!

OL4

- Optical lenses are available in diopter from -1.0 to -8.0 in -0.5 decrement
- Left / Right lenses are NOT interchangeable.



BS/NY



C



B



BS/BK



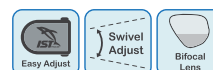
BS/B



BS/GN

MP-207**GAUGE**

- Twin lens mask with built-in bifocal lens (+1.75).
- Magnifying lenses at an angle to improve downward vision providing magnification.
- N/A in N. America.



BS

CB

MP-110**πPi**

- Frameless mask made from hypoallergenic liquid silicone
- Easy adjusting mask buckles attached to the skirt.
- Fits a wide range of facial profiles with comfort.



W

MP-111**Scope**

- Single-lens mask with hypoallergenic silicone skirt

BS/BK **NEW****MP-112****BURANO**

- Ultra soft and comfortable single lens silicone mask
- Metal-Like color painting technology



BS/PR



P/PR

M-11**DYNASTY**

Equipped with a protected nose purge which enables hand-free water clearance and equalization can be easily achieved even when wearing thick gloves.



BK

BS

NY



CB

M-12**IMPERIAL**

One of IST's most popular multi-window masks, the Imperial is popular with snorkelers and divers who need hand-free water clearance and panorama-like view with good peripheral vision.



BS

CGN

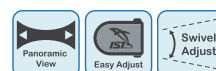
NY



CB

M-45**VENUS**

Oversized lens design significantly increases field of vision horizontally and as well as vertically. The internal volume, however, is not increased noticeably as the lens is brought closer to the eyes as much as possible.



BS

CB



MK

M-50**SHADOW**

Oversized lens design significantly increases field of vision horizontally and as well as vertically. The internal volume, however, is not increased noticeably as the lens is brought closer to the eyes as much as possible.



BK

B

NY



BS/BK

M-27**TORTUGA**

- Fine non-polished painting technology for more color options on this stainless steel frame mask
- Best for underwater photo shooting



BS/SS-BK



BS/SS-HP



BK



C



BS/SS-B

M2-R**AQUILA**

Material: Rubber

**M37****PEGASUS**

Material:
Black Silicone or Rubber



PROEAR MASK

Difficulty in equalization or the potential ear infections are problems that can happen to any diver regardless of their experience. It can become serious enough to stop one from diving. Solution: The IST ProEar Mask is manufactured to the highest standard and only the best available materials are used. It is designed to counter most of the unavoidable effects of pressure or water has on ears so you can have a more enjoyable underwater time.

REACH Approved
EN 16805 Approved

Strap

Mounted on swivel buckles, the silicone strap with its large contact surface secures the mask to the wearer.

Skirt

Made from the best grade of crystal clear, hypo-allergenic silicone, the skirt is soft and automatically conforms to a wide range of facial profiles.

Ear Covers

The soft silicone Ear Covers forms a water tight seal between the ear drum and the cover. The pressure buffer created to have the same pressure as your nasal cavity mask when air exhaled through the nose is introduced through the Equalization Tubes. Therefore the ear pressure in the middle and outer area is the same and the "squeeze" from the ambient will be significantly reduced. Other benefits from keeping the ears sealed also include reducing the chance of an ear infection from water, plus improved sense of direction and warmth retention.



Optical Lenses(ME80)

OL80

- Optical lens are available in
-1.0 to -8.0 in -0.5 decrement (also for tinted lens)
+1.0 to +4.0 in +0.5 increment (not available for tinted lens)

OL55/OL55M (ME55/ME55AF)

- Optical lenses are available in
-1.0 to -8.0 in -0.5 decrement (also for tinted lens)
+1.0 to +4.0 in +0.5 increment (not available for tinted lens)
- Left / Right or tinted optical lenses are interchangeable.

OL55/s

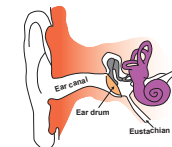
- Optical lens stickers at the bottom of the lens for ME55 and M-55 masks. Available in diopter from +1.0 to +4.0 in 0.5 increment.
- Left / Right lenses are NOT interchangeable.

Equalization Tubes

With one-way valve placed inside each tube, air is allowed to travel only from the mask to the ear covers for pressure equalization and water clearance while stopping water from flooding the mask in the unlikely event of flooded Ear Covers.

How does the ProEar mask function?

The squeeze we feel during a dive is caused by the imbalance of pressure either side of the ear drum. While our ear canal is exposed to water and ambient pressure, our middle ear (which is on the other side of the ear drum and is connected to our nasal cavity by Eustachian tube) is still filled with air and experiences less pressure. The greater external force is able to push our ear drum inward, causing discomfort or pain. With ProEar mask, the ears are completely sealed off from the outside. To have the same pressure as your nasal cavity, it is able to be introduced through the Equalization Tubes into the Ear Covers. Therefore the pressure on both sides of the ear drum becomes equal. So as pressure and depth increase, the simple act of breathing air into your Ear Covers can significantly improve your enjoyment of diving!



Benefits of using IST ProEar mask

- Pressure equalization can be easier achieved!
- Prevents pressure induced ear ache (barotrauma)
- Enhanced underwater hearing and sense of direction.
- Stops dirty / polluted water from entering the ear causing infection.
- Increased warmth around the ear in cold water condition (a specially designed ProEar hood is available separately)

Available models

ME80-CB



ME80-06



ME55-BS



ME55/AF



ME59-CB

For junior



MS-16

Neoprene mask strap for ProEar masks.



SN-104**SNORKEL WITH SPLASH GUARD & DRAIN VALVE**

- Silicone mouthpiece and purge valve for easy water clearance
- Splash guard top to channel the incoming water away efficiently
- 360 degree swivel mouthpiece
- The main tube is made from the environmental friendly **PU material**

**SN-60****SNORKEL WITH SPLASH GUARD & DRAIN VALVE**

- Silicone mouthpiece and purge valve for easy water clearance
- Splash guard top to channel the incoming water away efficiently
- 18 different colors combinations provide various of choices

**SN-204****DRY SNORKEL**

An evolution from the dry top system of IST SN-204, this whole new patent pending dry top system has combined the flotation device and the valve mechanism to make it to work more smooth when closing the valve at any swimming position and eliminate to possibility of locked air way.

Features include:

- High grade silicone centerpiece and mouthpiece
- Swivel and QD snorkel holder
- Ergonomic design to the mouthpiece for easier bite

**SNK-16**

Double bend silicone snorkel with splash guard and clearance purge.



SN-36**FREEDIVING SILICONE SNORKEL**

- Simple silicone snorkel which can be bent and stored in BCD pocket when not in use.

**SN-301**

- Non-purge snorkel with a stout snorkel holder.
- The silicone mouthpiece provides significant comfort which can decrease the level of jaw fatigue.

**SN-7**

- Silicone mouthpiece

**FP-01****SUMi**

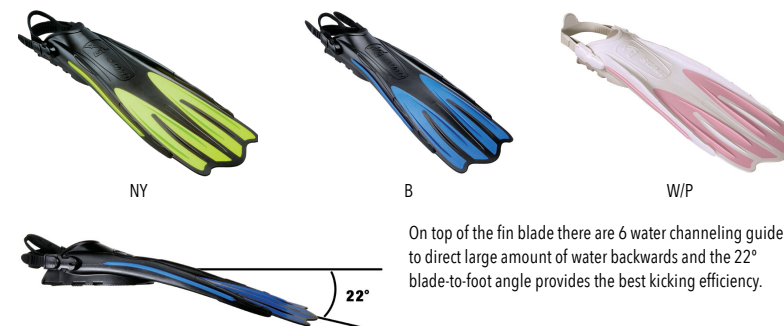
By utilizing various materials' stiffness and innovative structural arrangements, SUMi was designed to produce propulsion efficiency. The end result is a pair of fins which is not only easy to kick with, but excellent momentum is created to in the process to quickly propel the diver forward.

The fin's foot pocket fitting is the result of our extended research and manufacturing experience. This is an often neglected criterion when divers choose their fins. We are confident that SUMi will be one of the most comfortable fins that people put on.

COLOR	SIZES	SIZES	XS	S	M	L	XL
B, BK, NY	XS-XL	US	5-7	7-8	8-9	10-11	12-13
W/P	XS-S	EURO	36-38	38-39	40-42	43-45	46-48



- IST new ultra silicone bungee fin strap system (#FS-15)
- Super simple to use and no adjustment needed
- Enlarged pull tab loop for easier donning and doffing
- Sizes: S: 22cm
M: 25cm
L: 28cm



On top of the fin blade there are 6 water channeling guides to direct large amount of water backwards and the 22° blade-to-foot angle provides the best kicking efficiency.

FP-02 *Safari*

IST Safari Ultra-Light fin brings the most comfort and convenience yet performs powerful thrust output.
One-piece design, made from a special compounded formula TPR material eliminates every possible break point caused by connecting two different materials
A softer stiffness is made for the size of XS/S of the fin for an easier access for female and youth divers
Only 1.9kg (4.2lb) for size L/XL, your best choice for traveling ever.
Compatible with IST FS-15 silicone bungee fin strap for optional upgrades.

SIZES	XS/S	M/L	L/XL
US	5-7	8-10	11-13
EURO	36-39	40-43	45-48
Weight	1.7kg	1.8kg	1.9kg



F-1 *RUBBER FIN*

- Traditional rubber fin with proven design
- IST stainless steel spring fin strap compatible

SIZES	M	L	XL	XXL	3XL
US	5	6-7	8-9	10-11	12-13
EURO	36	37-39	40-42	43-45	46-48



F-4 *PROPULSION*

- The fin is useful in open water but also capable of handling dive missions in confined spaces.
- Durable and long lasting.
- IST stainless steel spring fin strap compatible

SIZES	M	L	XL
US	5-6	7-9	10-12
EURO	36-38	39-42	43-46



FK-22 *BORA BORA*

- Rubber grip under the foot pocket is designed to prevent any slippage.
- Underside foot pocket drain hole makes every kick light and easier.
- Quick release buckles makes putting on and pulling off easier and faster.

SIZES	S/M	L/XL	XL/XXL
US	6-8	9-10	11-12
EURO	36-41	42-44	45-47



FK-30

SPEEDY

- Open heel snorkeling fins.
- Comfortable foot pocket.
- Recommended to be worn with boots or neoprene socks.
- The blades are vented to guide water more efficiently.

SIZES	S/M	L/XL
US	4.5-8.5	10-13
EURO	37-41	44-48



FK-31

OTTER

- Broad sizes range design.
- Open toe box for quick drainage.
- Short, light, achieving efficient propulsion.

SIZES	S	M	L
US	4-7	7-10	10-13
EURO	35-40	40-44	44-48



F-12

SEA DIVER

- Durable and comfortable rubber fins
- Very flexible, powerful, and easy to maneuver
- Open toe box for quick drainage
- Broad sizes range.
- **Sizes XXS and below are for children**

SIZES	4XS	3XS	XXS	XS	S	M	L	XL
US	10-12	12-1	1-3	3-5	5-7	7-9	9-11	11-13
EURO	30-32	32-34	34-36	36-38	38-40	40-42	42-44	44-46



F-20

SUPER S

- Balanced blade and comfortable foot pocket
- Broad sizes range.

SIZES	XXS	XS	S	M	L	XL	XXL
US	1-3	3-5	5-7	7-9	9-11	11-13	13-15
EURO	34-36	36-38	38-40	40-42	42-44	44-46	46-48



F-36

VELOX

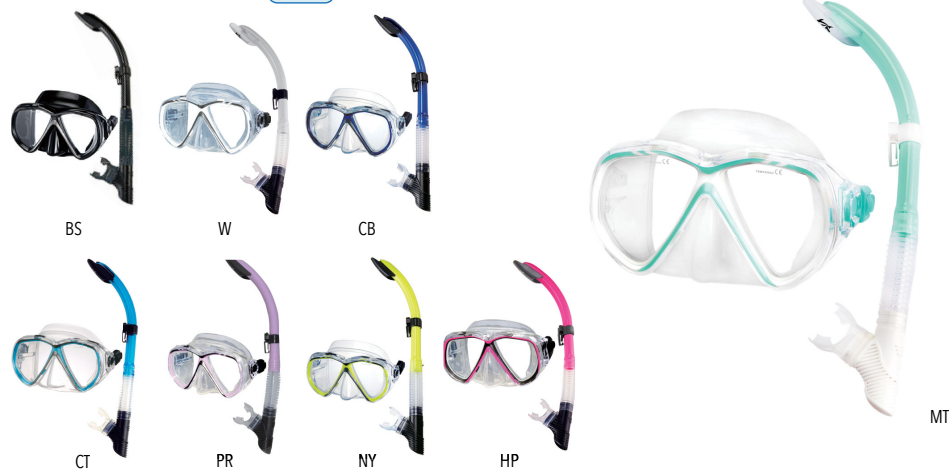
- Balanced blade and comfortable foot pocket
- Open toe box for quick drainage
- **Sizes 3XS to M for Color of Pink & White**

SIZES	3XS	XXS	XS	S	M	L	XL
US	1-2	3-4	4-6	6-7	8-9	9-10	11-13
EURO	33-34	35-36	37-38	39-40	41-42	43-44	45-47



CS75608/A

M75 + SN60 + CS8 (mesh bag)

**CS111608/A**

MP-111 + SN-60 + CS8 (mesh bag)

**CS8 CS8-L**

- 2-piece/ 4-piece combo set nylon mesh bag with straps.

DIMENSION	20cm x 44cm (7.9" x 17.3")
DIMENSION	32cm x 55cm (12.5" x 21.6")

**CS75-188/A**

M75-1 + SNK-8 + CS8 (mesh bag)

**CF-02/A**

M-75 + SN-60 + FK31 + CS8-L (mesh bag)



SIZES	S, M, L
-------	---------

**CF-03/A**

MP-111 + SN-60 + FK31 + CS8-L (mesh bag)

SIZES	S, M, L
-------	---------



MS-11

- Generic silicone mask strap.
- Good for IST masks M-9, M-11, M-12, M-30, M-50, M-55, M-59, M-67, M-71, M-80, M-100, MJ-111, MP-111, MP-112
- Available in clear and black silicone.

**MS-25**

- Silicone mask strap.
- Specially designed for the following IST masks: M-45, M-75, M75-1, M-88, M-200, MP-110, MP-201, MP-203, MP-207, MP208, MP-210
- Available in clear, black, green and white.

**MS-14**

- Mask strap for M-37 Pegasus mask.
- Available in black silicone and rubber.

**MS-80**

- Silicone mask strap
- Specially designed for the ProEar masks.
- Available in clear and black silicone.

**MS-16**

3mm Neoprene + Velcro mask strap for ProEar masks.
Neoprene Length: 17cm (16.7")

**MS-20**

- Comfortable 2 mm neoprene mask strap cover.
- Length: 22cm (8.6")



BW

AF-2/DOZ**ANTI-FOG SPRAY**

Anti-fog spray, comes in 30ml (1oz) bottles.

**AF-3/DOZ****ANTI-FOG GEL**

- 30ml (1oz)
- Anti-fog protection for multi-dive

**MB2****PLASTIC MASK BOX****MB8****LARGER PLASTIC MASK BOX**

P1

Complete purge valve and housing for SN-18.

**P1-1**

- Silicone exhaust valve with Ø2.2cm (Ø0.87").
- For the following snorkels: SN-18, SN-60.

**P1-2**

- Silicone exhaust valve with Ø1.9cm (Ø0.75").
- For snorkels: SN104, SN-204, SNK-8, SNK-16, SNK-205.
- Also for the following mask: M-11 & M-12.

**SH-60**

- Snorkel holder for SN-60.

**SH-1/S**

- Available in clear, black silicone
- Can be used with tube up to 2.9cm (1.14") in outside diameter.

COLOR

**FS-15****BUNGEE FIN STRAP**

- IST new ultra silicone bungee fin strap system
- Super simple to use and no adjustment needed
- Fits to IST FP-01, F-4, FK-22 fins
- Enlarged pull tab loop for easier donning and doffing
- Sizes: S: 22cm, M: 25cm, L: 28cm



SIZES	S	M	L
CM	22	25	28
INCH	8.7	9.8	11

FS-2

- Rubber fin strap for F1 fin.

**FS-7**

- Rubber fin strap for FB-7.

**FSK-31**

- Fin strap for FK-30, FK-31, FK-09

**FB7-SET**

Fin strap set for FP01, FP-02, F-4, FK22

**FB-7**

Quick release fin buckle for FP01, FP-02, F-4, FK22

**FBK31-SET**

Fin strap set for FK-30, FK-31, FK-09

**FBK-31**

Quick release fin buckle for FK-30, FK-31, FK-09

**FB-1**

Stainless steel fin buckle for F1 fin

**FG-1**

Rubber fin grips

SIZES S, M, L

**FS-10****FS-11****FS-12****Coil Fin Strap**

Comes in various buckle designs to suit different types of fins.

Each style has 5 lengths for comfortable and secure fitting (approximate spring length):

FS-10 Spring fin strap with complete IST FB-7 buckles

FS-11 Buckles FS-11 Spring fin strap with metal "C" clip for F-1

FS-12 Spring fin strap with stainless steel clip-on buckles

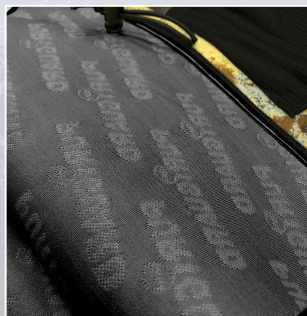
	S	M	L	XL	XXL
LENGTH (cm)	18.5	20.4	22	23.8	27.3
LENGTH (in)	7.3	8.0	8.7	9.4	10.7



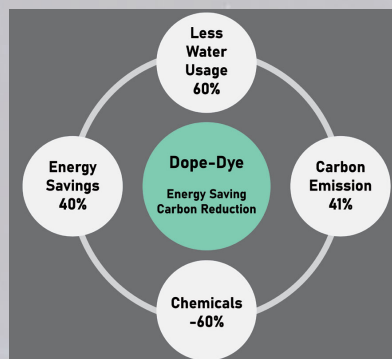
PURI GUARD

Nowadays, ocean environment is more polluted by many factors, such as marine plastics may provide few dissolved organic carbon sources for some bacteria to metabolize; this catch our attention and we have encouraged company wide eco-friendly innovation that offers added protection to water sports wears.

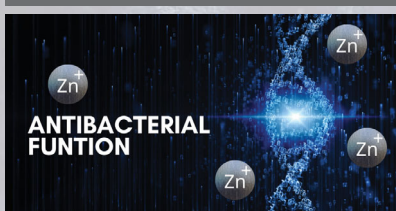
We are proud to announce that we now offer neoprene products using PURI GUARD fabrics- an IST executive antibacterial neoprene series not only protects against bacteria but also shields divers.



PURI GUARD fabrics has Zinc-embedded treatment, Zinc ions damage DNA in bacteria cells and inhibit protein formation which destroy the activity of bacteria and the antibacterial effect is achieved. The new technology permanently treats textiles can both inhibit bacteria & odor as the same time. PURI GUARD fabrics have awarded us a 99% against Staphylococcus aureus which rate from the world renowned American Association of Textile Chemists and Colorists (AATCC). PURI GUARD fabrics also can protect us from harmful UV rays, it has UV protection UPF 50+.



TEST BACTERIA: STAPHYLOCOCCUS AUREUS ATCC No.6538		
TEST GROUP	CFU/mL	REDUCTION (R) ¹ %
UNTREATED CONTROL AT "0" HR (C)	1.7 X 10 ¹	99
UNTREATED CONTROL AT "24" HR (B)	1.4 X 10 ¹	
TREATED TEST AT "24" HR (A)	1.0 X 10 ¹	



Moreover, PURI GUARD fabrics are no longer dyed post production which ensures 40% energy savings and 60% less water usage. Subsequently we are reducing chemical use by 60% and carbon emission by 41%. These numbers are not only significant but necessary to push forward our eco-friendly agenda.

Our goal is to continue to elevate the industry standard with protective and sustainable water sports apparel. With IST executive antibacterial technology, we can easily achieve multipurpose of antibacterial, odorless, UV protection and eco-friendly manufacturing solutions.

PG-WS815 (1.5MM) **NEW**

PG-WS80 (3MM)

PG-WS805 (5MM)

PG-WS807 (7MM)

DIVING JUMPSUIT

- IST signature jumpsuits, constructed of high-grade neoprene in 1.5mm, 3mm, 5mm and 7mm thickness options.
- Special printing technique on shoulders and chest areas offers extra durability in areas prone to high wear when diving with a BCD
- YKK #5 zips at wrists and ankles
- 1.5mm & 3mm suit Flat-lock Stitching / 5mm & 7mm suits: Double Blind Stitching
- 3mm&5mm&7mm suits: Super-stretch material at armpits and lower back area to maximize range of motion.
- 7mm suit: Semi-dry technology at wrists and ankles
- Size chart please go to page 50



SIZES	MEN'S	S	M	L	XL	XXL
	WOMEN'S	5	7	9	11	13



Integrated calf compression sleeves improve blood circulation to stave off leg cramps and fatigue.

PG-WS826

3MM CAMO JUMPSUIT FOR HUNTING IN WARM WATERS

- 3mm high-grade neoprene
- Flat-lock stitching constructions
- Tough Rotex material on elbow and knee pads for more protection.
- 5mm Chest gun-loading pad

SIZES	S, M, L, XL, XXL
-------	------------------



IMPERIAL SIZE CHART

Women's	5	7	9	11	13
Weight(lb)	110-121	122-132	133-143	144-154	155-165
Height(in)	5'1"-5'3"	5'3"-5'5"	5'5"-5'7"	5'7"-5'9"	5'9"-5'11"
Chest(in)	33.5	34.5	35.5	38	39
Waist(in)	24	25	26	28	30
Hip(in)	35	37	39	41	43

Men's	S	M	L	XL	XXL
Weight(lb)	135-162	163-185	186-215	216-235	236-255
Height(in)	5'3"-5'5"	5'6"-5'7"	5'8"-5'11"	6'-6'1"	6'2"-6'3"
Chest(in)	26/37	38/39	40/43	43/45	46/47
Waist(in)	29-31	32-33	35-37	38-39	40-41
Hip(in)	35-37	38-39	40-43	44-45	46-47

METRIC SIZE CHART

Women's	5	7	9	11	13
Weight(kg)	51-55	56-60	61-65	66-70	71-75
Height(cm)	155-160	161-165	166-170	171-175	176-180
Chest(cm)	85	88	91	96	100
Waist(cm)	61	64	66	71	76
Hip(cm)	89	94	99	105	110

Men's	S	M	L	XL	XXL
Weight(kg)	61-73	74-86	87-97	98-106	107-115
Height(cm)	160-165	166-170	171-180	181-185	186-190
Chest(cm)	91-95	96-101	102-109	110-114	115-119
Waist(cm)	73-78	79-83	84-93	94-99	100-105
Hip(cm)	89-94	95-100	101-109	110-114	115-120

PG-WS35

DIVING SHORTY

- High-grade neoprene in 3mm with stylish blue-black flat-lock stitching.
- Super-stretch material at armpits and lower back area to maximize range of motion.
- Special printing technique on shoulders and chest areas offers extra durability in areas prone to high wear when diving with a BCD.
- Size chart please go to page 50

SIZES	MEN'S	S	M	L	XL	XXL
	WOMEN'S	5	7	9	11	13



PG-SHN01

- 1.5 mm neoprene top, a great choice for any kind of watersports.
- Size chart please go to page 50.

SIZES	S, M, L, XL, XXL
-------	------------------



PG-VSHS0225 HOODED VEST

- 2.5mm Neoprene Hooded Vest
- Front YKK#5 Zip
- Superstretch fabric on Hood and torso sides
- Smooth skin face seal restricts water movement
- Size chart please go to page 50.

SIZES	XS, S, M, L, XL, XXL
-------	----------------------



PG-WJ0125 WIND-BREAKER JACKET

- 2.5mm neoprene jacket keeps the body warm in between or after dives.
- Taped edges stop the fabric from fraying.
- Size chart please go to page 50.

SIZES	XS, S, M, L, XL, XXL
-------	----------------------



PG-WP7 WATERSPORT PANTS

- 3mm Nylon / Rotex neoprene multi-purpose pants.
- Ankle zips for easy donning and doffing.
- **2 large side 1680D Nylon pockets with D-rings for easy access and storage.**
- **Rotex fabric designed on hips for great durability for watersports activities.**
- **Protective Add-on Knee pads.**
- Adjustable waist webbing w/ large D-ring and buckle.
- Size chart please go to page 50

SIZES	S, M, L, XL, XXL
-------	------------------

**PG-WP5 WATERSPORT PANTS**

- 2mm neoprene watersport pants
- Helpful ankle zips help with donning and doffing
- Protective printed knee pads.
- Drawstring fastener.
- Size chart please go page 50

SIZES	S, M, L, XL, XXL
-------	------------------

**PG-WSK03****3MM KID'S SHORTY**

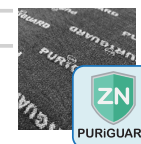
- IST's stylish shorty for kids to wear for any warm water sports activity
- Super-Stretch material at armpits to maximize range of motion and prevent binding
- Flat-lock stitching constructions

SIZES	XXS, XS, S, M, L, XL
-------	----------------------

**PG-WSK80****3MM KID'S JUMPSUIT**

- IST's full-length jumpsuits to keep kids warm and protected during temperate to cool water sports activities
- Super-Stretch material at armpits to maximize range of motion and prevent binding
- Zippers at wrists and ankles for easier donning and doffing
- Flat-lock stitching constructions
- Add on protective knee pad

SIZES	XXS, XS, S, M, L, XL
-------	----------------------

**PG-HD6****PROEAR HOOD**

- Made from PURiGUARD antibacterial fabric.
- Specially designed Pro Ear mask hood.
- Two layers of soft neoprene, 5mm in total.
- Special stretchable front panels allow for easy adjustment.
- Smooth skin face seal restricts water movement.

SIZES	S, M, L, XL, XXL
-------	------------------

**PG-HDN0130 (3MM)****HOOD**

- Made from PURiGUARD antibacterial fabric.
- Blind stitch and tripled glued hood.
- Smooth skin face seal restricts water movement.
- The bib can be tucked under wetsuit collar to maintain warmth.
- Double-layered top panel with vent.

SIZES	S, M, L, XL, XXL
-------	------------------

**PG-HDN0150 (5MM)****KIDS SIZE CHART**

SIZES	XXS	XS	S	M	L	XL
Height	3'3" / 99cm	3'6" / 109cm	3'11" / 119cm	4'3" / 129cm	4'7" / 139cm	5' / 152cm
Chest	1'11" / 59cm	2'2" / 64cm	2'4" / 70.5cm	2'5" / 74.5cm	2'6" / 78.5cm	2'7" / 82cm
Waist	1'4" / 42cm	1'6" / 48cm	1'8" / 53cm	1'10" / 56cm	1'11" / 59cm	2' / 62cm

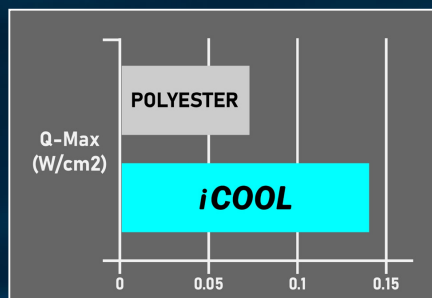
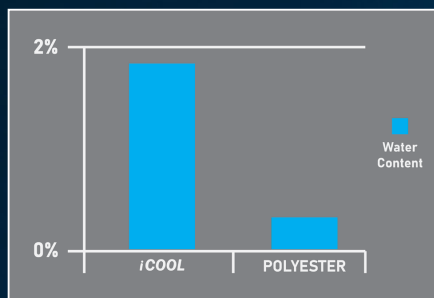


iCOOL

IST latest antibacterial technology also provides cooling solution for advanced rash guard fabrics PURIGUARD / i-Cool fabrics. Adding mineral material and Zinc-embedded treatment which have better thermal balancing ability.

PURIGUARD + iCOOL

The body temperature can be easily balanced with outside environment, and water content increased by 450% and Q-Max increased by 180% compared to other yarn (polyester), which achieve the effect of rapid cooling & more comfortable sensation to human body.



PG-HOOD4 UV protection 50+

iCOOL HOODS

Features include:

- Ultra comfortable tropical hood with collar
- Made from PURIGUARD/ iCool fabric
- Made from high quality spandex
- Flat-lock stitching
- UV protection applied



SIZES	XS	S	M	L
A	21cm	22cm	23cm	24cm
	8.2"	8.6"	9"	9.4"
B	36cm	37cm	38cm	39cm
	1'2.1"	1'2.5"	1'2.9"	1'3.3"



BK

BK/B

PG-DS46 UV protection 50+

iCOOL RASH GUARD

iCool technology is also applied on the material which provides not only UV protection but a better experience for all kinds of activities.

- Excellent for any outdoor and water sports activities
- Easy care
- UV Protect 50+
- iCool technology provides the perceived temperature 1~3°C lower than environment.
- Size Chart please go to page 56

SIZES XS, XS, S, M, L, XL, XXL



BK/GY



S/W



BK/B

PG-DS66 UV protection 50+

iCOOL RASH GUARD

iCool technology is also applied on the material which provides not only UV protection but a better experience for all kinds of activities.

- Excellent for any outdoor and water sports activities
- Easy care
- UV Protect 50+
- iCool technology provides the perceived temperature 1~3°C lower than environment
- Design for female
- Comfortable T-shirt style
- Size Chart please go to page 56

SIZES XS, S, M, L, XL



GY/B



F02

RASH GUARD SIZE CHART

PG-DS46	Metric Size Chart		Imperial Size Chart	
Size	Height (cm)	Chest (cm)	Height (cm)	Chest (cm)
XXS	146-150	80-86	4'9"-4'11"	31.5-34
XS	151-160	84-90	4'11"-5'3"	33-35
S	160-165	88-94	5'3"-5'5"	34.5-37
M	166-170	92-98	5'5"-5'7"	36-38.5
L	171-180	96-102	5'8"-5'11"	38-40
XL	181-185	100-106	5'12"-6'1"	39-41.5
XXL	186-190	104-110	6'2"-6'3"	41-43

PG-DS66	Metric Size Chart		Imperial Size Chart	
Size	Height (cm)	Chest (cm)	Height (cm)	Chest (cm)
XS	150-155	70-76	4'11"-5'1"	27.5-30
S	156-160	74-80	5'1"-5'3"	29-31.5
M	161-165	78-84	5'3"-5'5"	30.5-33
L	160-170	83-89	5'5"-5'7"	32.5-35
XL	171-175	87-93	5'7"-5'9"	34-36.5

WSR50

3MM DIVING REVERSIBLE JUMPSUIT

- Optimized for use as rental gear.
- Reversible design with large size marks on both sides to simplify finding and sorting sizes in the dive shop.
- 3mm high-grade neoprene with **DOUBLE BLIND STITCHING**.
- Super-stretch fabric at armpits for greater movements.
- YKK #5 zippers at ankles for easier donning and doffing.
- Size chart please go to page 50.
- **REVERSIBLE**

SIZES	MEN'S	S	M	L	XL	XXL
	WOMEN'S	5	7	9	11	13



Reversed

SV
(Men)P
(Woman)

GL-04

REEF GLOVES (2MM)

- Amara palm constructions
- Thumb and forefinger area of the gloves at right hand can be opened for photo shooting purpose

SIZES	XS, S, M, L, XL, XXL
-------	----------------------



GB

BK/B

S-326 (2.5MM)

- Stylish super-stretch neoprene gloves
- Extremely form fitting and comfortable
- Super-stretch Gloves

SIZES	XS/S, M/L, XL/XXL
-------	-------------------



S-900

TROPICAL GLOVES (2MM)

- 2mm gloves with AMARA palm.
- Extra reinforcements on finger tips and palm.
- Soft neoprene for increased finger dexterity.

SIZES	XS, S, M, L, XL, XXL
-------	----------------------



S-680 (5MM)

KEVLAR GLOVES

- 5mm semi-dry Kevlar-reinforced fabric lined gloves
- Double smooth skin semi-dry cuff restricts water movement
- Velcro closure

SIZES	XS, S, M, L, XL, XXL
-------	----------------------



S-780 (3MM)

KEVLAR GLOVES

- 3mm Kevlar-reinforced fabric lined gloves
- Velcro closure

SIZES	XS, S, M, L, XL, XXL
-------	----------------------



HD9

BEANIE STYLE HOOD

- Comfortable 3mm super-stretch neoprene hood with taped edges.
- Protects the head from getting sun burnt during the time being at the surface or for other watersport activities.
- Provides divers with basic warmth retention and prevents hair entanglement with the mask strap.
- Chin strap with velcro closure.

SIZES	S/M, M/L, L/XL
-------	----------------



DH-2

DIVER'S HOLSTER

- Made from 3mm neoprene.
- Gives extra storage space to carry additional gear.
- Additional D-rings served as the extra attachment points.
- Adjustable Velcro closure.
- No. 10 rust-proof YKK zips.

SIZES	S/M, L/XL, XXL
-------	----------------



SKB

BEACH SOCKS

- Super-stretch Spandex upper with stretchy ankle rim.
- Tough neoprene sole with anti-slip traction dots protects feet from uneven and slippery surfaces.
- Shield feet from sunburn, biting insects, hot or cold surfaces, and friction burns or blisters when worn inside sandals or fins.

SIZE	XS	S	M	L	XL	XXL
CM	24	25	26	27	29	29
INCH	9.5	9.8	10.2	10.6	11	11.4



SK-2

- 3mm Neoprene socks with anti-skid dots on soles.
- Double glued & blind stitched.

SIZE	S	M	L	XL	XXL
CM	24	25	27	28	30
INCH	9.5	9.8	10.6	11	11.8



SK-3

- 3mm Neoprene socks with anti-skid dots on soles.
- Double glued & blind stitched.

SIZE	S	M	L	XL	XXL
CM	24	25	27	28	30
INCH	9.5	9.8	10.6	11	11.8



SK-9

- 3mm ultra high-grade neoprene lined with smooth skin outside.
- Design to be worn with freediving fins to make you to fit the foot pocket more to reduce unnecessary effort to be put in kicking.
- Blind-stitching technology sealed with rubber glue to block the water outside.
- Boat socks design to make your legs look longer with elegance lines.
- Anti-slip dots at soles.

SIZES	XS	S	M	L	XL
US	4-6	6-8	8-10	10-12	13
EURO	34-38	38-41	41-44	44-47	48
CM	22-24	24-26	26-28	28-30	31
INCH	8.7-9.5	9.5-10.2	10.2-11	11-11.8	12



S65 TITANIUM**5MM SNEAKER SOLE**

The IST New Diving Boots S65 is designed comfortable, durable with a great grip sneaker sole. For years experience, we design different patterns on different area to provide the most grip friction. Considering the environment of diving activities, soft but durable rubber sole makes divers comfort and protection.

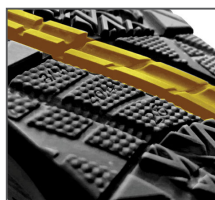
- 5mm Titanium NYLON II boots with sneaker sole.
- Double-guled and blind-stitched construction.
- Heel and Toe caps for durability and extra protection.
- No. 10 Ultra durable YKK zip.
- Built-in fin strap keeper.

SIZES	#4 - #13
-------	----------



- Front Toe and heel area with thinner horizontal lines makes water drain easily.
- Same design as tires to provide necessary grip.

- The Sawtooth pattern brings the most friction.
- Rough and thick zigzag protect the weak points of the sole.



- The fine dots in arch for more comfortable wear

SIZES	3XS	XXS	XS	S	M	M/L	L	XL	XXL	3XL
US	4	5	6	7	8	9	10	11	12	13
Euro	34/35	36	37/38	39	40/41	42	43/44	45	46/47	48
cm	22	23	24	25	26	27	28	29	30	31

B220**NEW****LOW CUT BOOT**

- Low cut boots with 10mm(0.4") thick felt sole.
- 3mm neoprene with **ROTEX** upper.
- Great for walking on slippery coastal reefs
- Glued and blind stitched seam to minimize water flow.
- Size chart please go to page 60

SIZES	#4 - #13
-------	----------

**S38****LOW CUT BOOT**

- Versatile 3mm tropical boots.
- Glued and blind stitched seam to minimize water flow.
- Vulcanized sole.
- Glued and blind stitched seam to minimize water flow.
- Size chart please go to page 60.

SIZES	#4 - #13
-------	----------



BK

BT0430**LOW CUT BOOT**

- Optimized for use as rental gear.
- Large size marks on uppers to simplify finding and sorting sizes in the dive shop.
- 3mm neoprene sandwiched between high quality, stretchy nylon fabric.
- Flat-lock stitched upper seams to prevent skin irritation.
- Tough, vulcanized rubber sole.
- Toecap and heel cap for greater protection and durability.
- Elastic fabric at ankles for easier donning and doffing.
- Size chart please go to page 60.

SIZES	#4 - #13
-------	----------



S7 (5MM) S7/6.5 (6.5MM) TITANIUM

- Titanium and spandex lined boots.
- All boots double-glued and blind-stitched.
- Excellent for cold water diving.
- Vulcanized rubber sole.
- Toe and heel caps for additional support and protection.
- Built-in fin strap keeper.
- No.10 ultra durable YKK zip.
- Size chart please go to page 60.

SIZES	#4 - #13
-------	----------

**S19**

- 5mm nylon II boots.
- Vulcanized rubber sole with additional heel cap for protection and durability.
- Built-in fin strap keeper.
- No.10 ultra durable YKK zipper.
- Size chart please go to page 60.

SIZES	#4 - #13
-------	----------

**B400**

- Tall-cut boots with 10mm (0.4") thick felt sole.
- Great for walking on slippery coastal reefs.
- 3mm nylon II neoprene upper.
- Toe and the heel caps can provide extra foot protection.
- No.10 YKK zipper.
- Size chart please go to page 60.

SIZES	#4 - #13
-------	----------

**H-3****STAINLESS STEEL WETSUIT HANGER**

- Flexible arms which can be shaped for suit hanging.
- Padded contact surface to prevent creasing and marking while hanging.
- Hook can be disassembled to save storage space.

**H-6****MULTI-PURPOSE HANGER**

- A versatile hanger which can be used to hang equipment such as BCD, regulator, gloves and boots.

**H-7****DRY SUIT HANGER**

- 2-in-1 hanger for post-dive dry suit and regulator drying.
- Lightweight structure yet ultra strong in strength.
- Built-in dummy cylinder valve for easy regulator attachment (DIN / Yoke compatible).
- Can be disassembled to save storage space.

**NC1-SET****NEOPRENE SUIT REPAIR GLUE SET**

- 30ml x 2
- Comes in 1 transparent glue and 1 glue for different colors of products

NC1**NEOPRENE SUIT REPAIR GLUE**

- Each tube contains 30ml

**NCL-1****WETSUIT CLEANER**

- 250ml(8.5oz)
- Chlorine remover formula included
- Designed for all kinds of Neoprene product

**NCL-2****NEOPRENE CLEANER & ODOR**

- High performance formulation to remove and prevent unpleasant odor. Specialized for neoprene gears include wetsuits, dry suits, gloves, & boots.
- Environmental friendly ingredients.
- Safely inhibits the smelly funk & Revive your neoprene gears easily!
- 60ml(2oz)



BEP-01**NEW****BEACH PONCHO**

- Unisex towel robe, perfect for water sports
- Microfiber for highly absorbent water and quick dry
- Two large pockets to store your swimsuit or essentials
- Large size hoodie provides a spacious environment to easily move around.
- Lightweight and easy to carry
- One size fits all
- Total Length: 140.5cm (55.3")



Large Pockets



Large Hoodie

**DS-21****NEW****DIVE SKIN**

- Spandex dive skin.
- Excellent protection from the sun and marine creatures.
- Very stretchy, comfortable and easy to put on take off.
- Tall neck for extra sun protection.
- Stir-up heel and thumb loops to stop the dive skin from riding up.
- Uni-sex Design

SIZES	XS, S, M, L, XL, XXL



SW



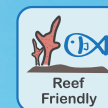
BK/B

SS-01**ANTI-JELLYFISH SUNSCREEN**

IST research and develop the Mineral Sunscreen Lotion contains no artificial chemical ingredient. Contains Reef friendly formula without Octinoxate & Oxybenzone. The Anti-Jellyfish protection suits for all kinds of water sports activities.

The Anti-Jellyfish protection suits for all kinds of water sports activities.

- Mineral Sunscreen lotion in SPF50
- **Anti-Jellyfish formula**
- **Reef Friedly with natural ingredient**
- Extracting from Laminaria Ochroleuca, Tocopheryl acetate, squalane and several elements brings moisturize and protection of skin.
- Fragrance Free for all skin types, provides protection from head to toe.
- Pass FDA and SGS test.
- 100ml



BE-206**NEW****SHORT SLEEVE RASH GUARD**

- UV protection Rash Guard in Long sleeve
- Cool Max fabric bring comfortable wearing
- Flat-lock stitching to prevent chafing
- Unisex design, big range sizes available

SIZES	XS, S, M, L, XL, XXL
-------	----------------------



GY/B



W



Rear View

BE-207**NEW****LONG SLEEVE RASH GUARD**

- UV protection Rash Guard in Long sleeve
- Cool Max fabric bring comfortable wearing
- Flat-lock stitching to prevent chafing
- Unisex design, big range sizes available

SIZES	XS, S, M, L, XL, XXL
-------	----------------------



GY/B



W



Rear View

BE-203**T-SHIRT**

- Made with cotton.

SIZES	XS, S, M, L, XL, XXL
-------	----------------------



BK



W



Rear View

CAP-16**IST SUN HAT**

- Multi function Outdoor Sun Hat.
- Breathable fabric with wide brim.
- Quick dry and Waterproof materials for diving without hassle.



Changing different style for multi-situation



KH

NEW

W

NEW

BK



CAMO



F/GY

CAP-7**IST BASEBALL CAP**

One size fits all adult cap with embroidered logo at the front and international and European dive flag at the back.

**CAP-9****IST FISHING CAP**

Adult cap with removable sun blocking screen at the back.



LJ-500**ADULT SNORKELING VEST**

- 210D Nylon with TPU coating
- Easy Oral inflation
- **SOLAS** reflective tape
- Crotch strap with buckle

SIZES	LJ500-M
Weight	50-80kg/ 110-176lb
Height	150-175cm/ 4'11"~5'9"
Buoyancy	@84.5N (8.6kgf/ 19lbf)

SIZES	LJ500-L
Weight	80-130kg/ 176-286lb
Height	175-190cm/ 5'9"~6'3"
Buoyancy	@102N (10.4kgf/ 23lbf)



SOLAS

**LJ-600****KID'S SNORKELING VEST**

- 210D Nylon with TPU coating
- Easy Oral inflation
- **SOLAS** reflective tape
- Crotch strap with buckle

SIZES	LJ600
Weight	20-50kg/ 44-110lb
Height	120-150cm/ 3'11"~4'11"
Buoyancy	@53.4N (5.44kgf/ 12lbf)



SOLAS

**G-39****SWIMMING GOGGLE**

- Wrap round water sport goggle
- Comfortable silicone skirt provides watertight seal



CB

C



BK

G-40**OPTICAL SWIMMING GOGGLE**

- The G40 RX Goggle With UV Protection.
- We answered the need early-on for supplying high-quality prescription lens swimming goggle, including providing customers with the easy-to use, exclusive and innovative Prescription Lenses Calculator.

Features

- The lenses are made of strong impact resistant polycarbonate resin. In addition, the lenses block out harmful ultraviolet rays.
- The long lasting anti-fog system prevents fogging under all conditions.
- Available diopter from
-1.0 to -6.0 (by 0.5)
-7.0 to -10.0 (by 1.0)
+1.0 to +8.0 (by 1.0)
- Left / Right lenses are interchangeable.



Switch



G40-OP

SC-7**SWIMMING CAP**

- Made from silicone complex material with spandex inside



HP



B

CV-01**2-IN-1 WIND COAT**

- Lightweight wind breaker coat with attachable 2mm neoprene vest
- Excellent for in-between dives on boat
- Vest: 2mm ultra high-grade neoprene with front zip
- Vest: Super-Stretch material at waist
- Coat: made from super lightweight water repellent fabric which can be worn individually or with vest attached

SIZES	XS, S, M, L, XL, XXL
--------------	----------------------



Hat

Attachable 2mm
Neoprene Vest

Storage Pocket



Water Repellent Fabric

MJ-111**Uno**

- Single lens mask with tempered glass for kids
- Hypoallergenic silicone mask skirt and strap for ultra comfortable
- Fits wide range of facial profile



W/T



HP



PB/NY

**M-59****TWINGO**

- Comfortable twin lens mask with a skirt that is able to accept a great range of facial profiles.
- Hypoallergenic mask skirt and strap.
- Swivel buckles add to comfort while wearing.



O



P



W



W/PB



CBK



CB

M-71**LYRA**

- Kid's single lens mask with tempered glass, silicone skirt and strap.
- Swivel buckles that changes angle to accommodate various facial profiles.



BK



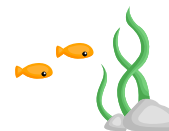
NY



B

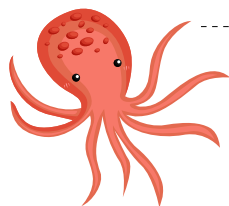
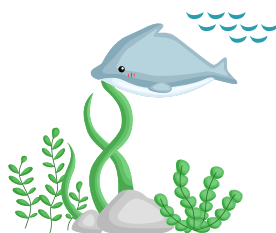


W/PB



SNK-205

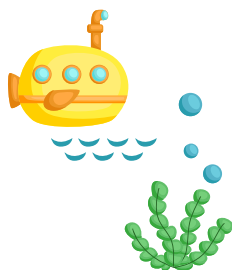
- Dry snorkel for kids with silicone tube and mouthpiece
- Equipped with purge valve to channel water out of the snorkel
- Smooth air passage and easy breathing

**SNK-8**

- Junior snorkel with splash guard and purge
- Small hypoallergenic silicone mouthpiece for children

**SN-18**

- Perennial best selling snorkel.
- Hypoallergenic liquid silicone mouthpiece.
- Easy to adjust snorkel holder.
- Purge valve for easy water clearance.

**FK-09****SWIFT**

- Stylish kids' open heel fins.

SIZES	L/XL
US	3-5
EURO	34-38

**F-36****VELOX**

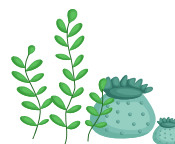
- Balanced blade and comfortable foot pocket
- Open toe box for quick drainage
- Sizes 3XS to M for Color of Pink

SIZES	3XS	XXS
US	1-2	3-4
EURO	33-34	35-36

**F-12****SEA DIVER**

- Durable and comfortable rubber fins.

SIZES	4XS	3XS	XXS
US	10-12	12-1	1-3
EURO	30-32	32-34	34-36

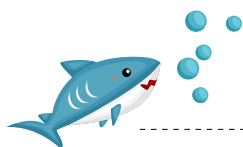


PG-WSK03

3MM KID'S SHORTY

- Made from PURiGUARD antibacterial fabric.
- IST's stylish shorty for kids to wear for any warm water sports activity.
- Super-Stretch material at armpits to maximize range of motion and prevent binding.
- Flat-lock stitching constructions.
- Size chart please go to page 53.

SIZES	XXS, XS, S, M, L, XL
-------	----------------------



B

HP

NY

PG-WSK80

3MM KID'S JUMPSUIT

- Made from PURiGUARD antibacterial fabric.
- IST's full-length jumpsuits to keep kids warm and protected during temperate to cool water sports activities.
- Super-Stretch material at armpits to maximize range of motion and prevent binding.
- Zippers at wrists and ankles for easier donning and doffing.
- Flat-lock stitching constructions.
- Size chart please go to page 53.

SIZES	XXS, XS, S, M, L, XL
-------	----------------------



HP

B

NY

S-38J

- Versatile 3mm kid's tropical booties.
- Vulcanized sole for better grip in wet conditions.

SIZES	1	2	3
EURO	30	31/32	33
CM	18.5	19.2	21



BK

SK-3J

3MM NEOPRENE SOCKS

- 3mm short-cut neoprene socks
- Blind stitching constructions

SIZES	S	M	L	XL
LENGTH	20cm	21cm	22cm	23cm
HEIGHT	11.5cm	12cm	12.5cm	13cm



Anti-slip dots

BE-K01

NEW

RASH GUARD FOR KIDS

- UV protection Rash Guard in Long sleeve
- Cool Max fabric bring comfortable wearing
- Flat-lock stitching to prevent chafing

SIZES	2, 4, 6, 8, 10
-------	----------------



GN

Y



LB

Rear View

BE-K02

NEW

RASH GUARD FOR KIDS

- UV protection Rash Guard in Long sleeve
- Cool Max fabric bring comfortable wearing
- Flat-lock stitching to prevent chafing

SIZES	2, 4, 6, 8, 10
-------	----------------



GN

Y



LB

Rear View

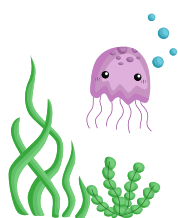
Size	Height (cm)	Chest (cm)	Height (in)	Chest (in)
2	105 - 115	60 - 66	3'5" - 3'9"	23.5 - 26
4	115 - 125	64 - 70	3'9" - 4'1"	25 - 27.5
6	125 - 135	70 - 76	4'1" - 4'5"	27.5 - 30
8	135 - 145	74 - 80	4'5" - 4'9"	29 - 31.5
10	145 - 155	80 - 86	4'9" - 5'1"	31.5 - 34

CS-71088/A

M-71 + SNK-8 + CS8 (mesh bag)

**CS-59188/A**

M-59 + SN-18 + CS8 (mesh bag)

**CFJ-02/A**

MJ111 + SNK-205 + FK09 + CS8-L (mesh bag)

SIZES	L/XL
US	3-5
EURO	34-38

**CS8 CS8-L**

- 2-piece/ 4-piece combo set nylon mesh bag with straps.

DIMENSION	20cm x 44cm (7.9" x 17.3")
DIMENSION	32cm x 55cm (12.5" x 21.6")

**CF-710809/A**

M-71 + SNK-8 + FK-09 + CS8-L (mesh bag)

SIZES	L/XL
US	3-5
EURO	34-38

**CFK-590809/A**

M59 + SNK-8 + FK09 + CS8-L (mesh bag)

SIZES	L/XL
US	3-5
EURO	34-38



MP-210**NEW****SONIC**

- Extreme Low volume Frameless mask
- Made from hypoallergenic liquid silicone
- Prefect design for Free diving



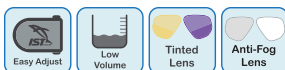
- Extreme low volume but with deep nose space for more comfortable fits.



- Buckle attached on Skirt for more flexible without fragile parts.
- Engrave lines on top for easier clutch.

**MP-201****MP-201/AF****PROTEUS**

- Comes with tinted lenses to enhance underwater colors
- Metal-Like painting technology for more colors of choice
- Super low volume design makes this mask become the best choice for free diving
- **Anti-fog lens available.**



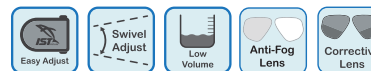
BS/BK

BSM-BK/Y
Grey lens with mirror reflectionBSM-SV/R
Blue lens with orange reflection

BSM-BK

MP-203**MP-203/AF****HUNTER**

- Extremely low volume design.
- Swivel and easy-adjust buckles.
- Ideal for hunters and photographers.
- The highest grade silicone available for a soft comfortable seal.
- Perfect as a spearfishing, free diving or back-up mask as it folds and fits easily in your BCD pocket.
- Tempered glass for safety and durability.
- Non-polish finished mask skirt prevents from reflecting of sunlight.
- **Anti-fog lens available.**



MB



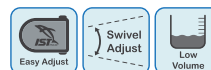
BS



BSM-BK

M-88**BLUTECH**

The bendable buckles are attached to the stretchy hypoallergenic silicone skirt so they will not interfere with fitting and this feature enables the mask to be packed into tight luggage space while preparing for a trip.



BS/BK



GS-07

M14-BSM**VEGA MASK WITH TINTED LENS**

- Perfect for spear-fishing



06

MP-208**ATOM**

- Extreme small volume mask



BS

SN-36**FREEDIVING SILICONE SNORKEL**

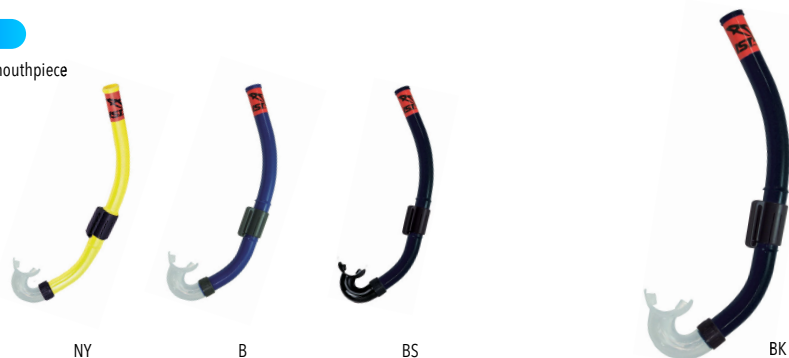
- Simple silicone snorkel which can be bent and stored in BCD pocket when not in use.

**SN-301**

- Non-purge snorkel with a stout snorkel holder.
- The silicone mouthpiece provides significant comfort which can decrease the level of jaw fatigue.

**SN-7**

- Silicone mouthpiece


FRA-01/F **FATHOM BLUE**
FRA-01 APNEA DIVING FINS
FRA-01 Apnea Diving Fins

Fathom Blue is a purpose-built apnea diving fin (free diving / spear fishing). The comfortable foot pocket and powerful blade provide efficient thrust and unparalleled underwater maneuverability.

Although more expensive, rubber is our chosen material to make Fathom Blue's foot pocket. We were able to strategically build a rubber foot pocket with multiple flexibility while fins made from various plastic compounds do not share the same advantage. This means Fathom Blue's foot pocket is able to produce a spring-like effect when finning, yet its base (sole) is rigid and efficient.

Specification

- Blade Dimension(H x W) 22cm x 60cm (8.7" x 23.6")
- Over Length(Size: L/XL) 92cm(36")



The blade gives maximum propulsion and best efficiency.

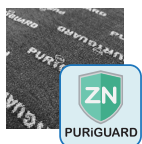
The fin can be taken apart should the need to change blade arises.

Size Chart	Fin Sizes		XXS/XS	XS	S/M	M/L	L/XL
Barefoot	US		4-5	6-7	8-9	10-11	12-13
	EURO		36-38	38-40	41-42	43-44	45-46
Worn with socks	3mm	US		5	7	9	11
		EURO		38	40	42	44
	5mm	US		4	6	8	10
		EURO		37	39	41	43
	7mm	US			5	7	9
		EURO			38	40	
Weight			1.9kg (4.2lb)	2kg (4.4lb)	2.1kg (4.6lb)	2.2kg (4.9lb)	2.3kg (5lb)

PG-WS826**3MM CAMO JUMPSUIT FOR HUNTING IN WARM WATERS**

- 3mm high-grade nylon II neoprene
- Flat-lock stitching constructions
- Tough Rotex material on elbow and knee pads for more protection
- 5mm Chest gun-loading pad
- Size chart please go to page 50.

SIZES	S, M, L, XL, XXL
--------------	------------------

**VSA-0240****APNEA WEIGHT VEST**

- 4mm high-grade neoprene vest with 8 weight pockets and each pocket takes up to 2KG (4.4lb) weight.
- 1.5" webbings at both shoulders and waist for easy adjustment.

SIZES	M, L, XL
--------------	----------



10/BY

BK

**PG-VSH100-10****CAMOUFLAGE HOODED SUITS**

- Spandex material with high grade neoprene at front torso
- Flat-lock stitching.
- Foamed chest pad for spear gun loading.
- Designed to be worn over a wetsuit or alone.
- Size chart please go to page 50.

SIZES	S, M, L, XL, XXL
--------------	------------------



10/B

10/GN



10/BY

CAP-16**IST SUN HAT**

- Multi function Outdoor Sun Hat.
- **Breathable fabric with wide brim.**
- **Quick dry** and **Waterproof** materials for diving without hassle.

**S-926 (2MM)**

- 2mm camouflage spear fishing glove with AMARA palm
- Extra reinforcements on finger tips and palm
- Soft neoprene for increased finger dexterity

SIZES
XS, S, M, L, XL, XXL

**S-326 (2.5MM)**

- Stylish super-stretch neoprene gloves.
- Extremely form fitting and comfortable.
- Anti-slip dots on palm and fingers for better underwater grip.
- Available in 3 sizes.

SIZES
XS/S, M/L, XL/XXL

**SK-9**

- 3mm ultra high-grade neoprene lined with smooth skin outside.
- Design to be worn with freediving fins to make you to fit the foot pocket more to reduce unnecessary effort to be put in kicking.
- Blind-stitching technology sealed with rubber glue to block the water outside.
- Boat socks design to make your legs look longer with elegance lines.
- Anti-slip dots at soles.
- Size chart please go to page 59

**FD-BUOY/E****FREEDIVING BUOY**

- 15" inner diameter freediving buoy made from heavy duty 600D PU coated polyester fabric for outer shell; ultra high-grade rubber for inner tire.
- **A flag seat located on top of the buoy for dive flag if needed.**
- 6 handles located around the buoy allows several divers to use at the same time; **2 extra handles on top.**
- 2 stainless steel D-ring at sides of the buoy for connecting with other buoys if necessary.
- 2 YKK #10 zips at front cover for easy operation and also prevent stuffs from falling out.
- **Double mesh bag inside for storage personal item.**
- 4 stainless steel grommets at bottom to drain water.
- 2 stainless steel D-ring are fixed at bottom with extra durable 2" polyester webbing for divers to connect weight and rope; max. dry weight loading 300KG (660lbs).
- Comes with a tire inflation adapter can be connected to a BC hose.



Double mesh bag for storage personal item



2 shoulder straps designed for easy carrying



Comfortable hand grip



D-ring for rope storage

FD-R/50M**FREE DIVING STATIV ROPE 50M(164FT)**

- 10mm in rope diameter / 50 meters(164ft) in total length.
- Static elongation of the rope <5%.
- Neon color designed for better visibility underwater.
- The rope holds up to 1800Kgs(3,968lbs)

**N8****TIRE INFLATOR**

- Copper chrome plating covered by aluminum alloy.
- QD connector design for BC hose.
- With this inflator, FD-IT/15 inner tire can be fully inflated in 15 seconds.

**FD-IT/15****INNER TIRE**

- High quality natural rubber compounded with special formula
- makes the tire more durable than other rubber products.
- Comes with US standard TR-15 valve, can be inflated with bicycle inflator or IST N-8 product.
- Dimension: Inner Diameter: 390mm(15.35")
- Otter Diameter: 750mm(29.53")



Comes with US standard TR-15 valve

BG-04**FREE DIVING BACKPACK**

- Constructed with heavy duty 600D PU coated polyester.
- This small backpack with a dimension of 33cm x 36cm x 47cm (13" x 14.2" x 18.5") yet it is still roomy enough for all of your spearfishing gears.
- 2 front pockets for keys, phones, and wallets.
- Bungee cord at side helps to fix the spear guns.

DIMENSION	33cm x 36cm x 47cm (13" x 14.2" x 18.5")
------------------	--

**BGM-05****MESH BAG WITH HANDLE**

- Heavy duty 420D nylon and lasting mesh bottom allows for fast drainage.
- Stainless steel made handle with clip provides convenience, quick and easy access to the interior.

DIMENSION	90cm x 60cm (35.4" x 23.6")
------------------	-----------------------------

**K-21****STAINLESS STEEL KNIFE**

- 11cm(4.3") long 420 grade stainless steel point-ed-tip blade.
- Serrated edge with line cutting groove.
- Rubber knife straps are included.
- Designed for spearfishing purpose.

**WB15-1.3M (4'3")****WB15-1.5M (5')****RUBBER WEIGHT BELT**

- Rubber belt is stretchy and self-adjust to changes in wetsuit's thickness at different depths.
- Sturdy stainless steel buckle.



IST understands each rental is an opportunity to establish a loyal customer relationship, and we present the IST Rental Collection with that goal in mind.

DELTA

J-1900/E

Features include:

- 33lb(147N) back inflated bladder
- Stainless steel D-rings, 2 on Shoulder, and 2 on waist Harness
- Reshaped and upgraded bladder provides better control of buoyancy and keeps divers at vertical position at the surface
- K style power inflator with pull dump
- 16" Military grade corrugated rubber inflation hose
- 2 quick-release weight pockets; Max. load 4kg(8.8lb) each
- **ONE SIZE FITS MOST**

CE APPROVED



Side View



B



P



BK



J-800-1000D

Features include:

- Simple yet traditional jacket style BCD
- Tough 1000D cordura.
- Cold water capable power inflator with pull dump.
- 2 additional rear quick air dump valve.
- Adjustable sternum strap.
- Strong and lightweight delrin D-rings.
- 2 roomy side pockets with Velcro closure
- Padded backpack.
- Size chart go to page 7

CE APPROVED



Waterproof
Dump Valve



Cold Water Capable
Power Inflator
IF-1700/N



2 additional rear quick dump
valves

R-750

FLOW-THROUGH PISTON REGULATOR



O-50

NON-ADJUSTABLE OCTOPUS



BK

NY

GP-9200

TRIPLE GAUGE CONSOLE



MP-111

Scope



Panoramic
View



Rental
Gear



Easy
Adjust



W



B



BS/B



NY



BS/HP



BS/BK

NEW

M-9

SATURN

OL4

- Optical lenses are available in diopter from -1.0 to -8.0 in -0.5 decrement
- Left / Right lenses are NOT interchangeable.



Corrective
Lens



Rental
Gear



Easy
Adjust



BS/NY



C



B



BS/BK



BS/B



BS/GN

M-55

CORONA

OL55/OL55M

- Optical lenses are available in -1.0 to -8.0 in -0.5 decrement (also for tinted lens) +1.0 to +4.0 in +0.5 increment (not available for tinted lens)
- Left / Right or tinted optical lenses are interchangeable.
- **Anti-fog lens available.**

OL55/S

- Optical lens stickers at the bottom of the lens for ME55 and M-55 masks. Available in diopter from +1.0 to +4.0 in 0.5 increment.
- Left / Right lenses are NOT interchangeable.



BS/CH
The latest chrome plating technology gives Corona mask a refreshing outlook

F-20

SUPER S



SIZES	XXS	XS	S	M	L	XL	XXL
US	1-3	3-5	5-7	7-9	9-11	11-13	13-15
EURO	34-36	36-38	38-40	40-42	42-44	44-46	46-48

SN-7



WSR50

3MM DIVING REVERSIBLE JUMPSUIT

- Optimized for use as rental gear.
- Reversible design with large size marks on both sides to simplify finding and sorting sizes in the dive shop.
- 3mm high-grade neoprene with double blind stitching.
- Super-stretch fabric at armpits for greater movements.
- YKK #5 zippers at ankles for easier donning and doffing.
- Size chart please go to page50.
- **REVERSIBLE**

SIZES	MEN'S	S	M	L	XL	XXL
	WOMEN'S	5	7	9	11	13



Reversed



SV
(Men)



P
(Woman)

BT0430

LOW CUT BOOT

- Optimized for use as rental gear.
- Large size marks on uppers to simplify finding and sorting sizes in the dive shop.
- 3mm neoprene sandwiched between high quality, stretchy nylon fabric.
- Flat-lock stitched upper seams to prevent skin irritation.
- Tough, vulcanized rubber sole.
- Toecap and heel cap for greater protection and durability.
- Elastic fabric at ankles for easier donning and doffing.
- Size chart please go to page 60.

SIZES	#4- #13
-------	---------



HUKA

HUKA diving can be compared to a form of advanced snorkeling; it is an excellent step between snorkeling and scuba diving, with all the fun of both. There is lots of potential in HUKA. Many people are more inclined to give it a try – there are no classes or certification needed, it's perceived as less "dangerous" and requires less gear. There is no Master Diver needed, just a HUKA guide and it's also safer with a 20 ft. deep maximum. Moreover, the minimum age for HUKA diving is only 8 years old, and parents are much more inclined to having their kids partake in a safe HUKA dive! Compared to scuba diving, HUKA diving is highly accessible.


HUKA-FD

FLOATATION DEVICE

Let the canoe carry heavy tank for you!


HUKA-VSN0150

HAVE FUN WITH SAFETY

Special design to keep the air stick with you!

HUKA-1 INCLUDES 1 ~ 11, 12-1

HUKA-2 INCLUDES 1 ~ 11, 12-2

1.	Floataion Device w/ Flag & Inflator 125 x 85 x 20 cm (48.5" x 34" x 8")	x 1 pc
2.	Huka-R8	x 1 pc
3.	Huka-O60	x 2 pcs
4.	Huka-GP15 (w/o hose)	x 1 pc
5.	Huka-LP/5ft (1.5M)	x 2 pcs
6.	Huka-HP/5ft (1.5M)	x 1 pc
7.	ON1-L/NY	x 2 pcs

8.	JT-WP8	x 8 pcs
9.	WB-10	x 2 pcs
10.	HUKA-VSN0150 Size: S, M, L, XL	x 2 pcs
11.	LP-BC	x 1 pc
12-1	Huka-LP/12ft (3.6M) for HUKA-1	x 2
12-2	Huka-LP/22ft (6.6M) for HUKA-2	x 2

Single-Tank Single-Bladder BCD

JT-30H / JT-40H

- Stainless steel plate + Basic harness



JT-31H / JT-41H

- Aluminum steel plate + Basic harness



Technical BCD Components

JT-30 Single bladder air cell



HB-1

Basic harness & buckle set.



JT-40 Single bladder air cell



BP-3

Stainless steel back plate.

BP-4

Aluminum back plate.



HB-3

Crotch strap set.



TAD-1

Single tank adaptor



BP-2/I x2

Tank belt



HD-30H

BCD Handle



HB-4

Back plate pad & pouch.



HB4-SCREW SET

Plate pad hardware.



JT-WP7/SV x2

Tech BCD weight pockets.



JT-30D / JT-40D

- Stainless steel plate + Deluxe harness



JT-31D / JT-41D

- Aluminum steel plate + Deluxe harness



Technical BCD Components

JT-30 Single bladder air cell



HB-2

Deluxe harness & buckle set.



JT-40 Single bladder air cell



BP-3

Stainless steel back plate.

BP-4

Aluminum back plate.



HB-3

Crotch strap set.



TAD-1

Single tank adaptor



BP-2/I x2

Tank belt



HD-30H

BCD Handle



HB-4

Back plate pad & pouch.



HB4-SCREW SET

Plate pad hardware.



JT-WP7/SV x2

Tech BCD weight pockets.



Twin-Tank Single-Bladder BCD

JT-50H

- Stainless steel plate + Basic harness and twin tank band set



JT-51H

- Aluminum steel plate + Basic harness and twin tank band set



Technical BCD Components

JT-50

Twin tank Single bladder air cell



HB-1

Basic harness & buckle set.



BP-3

Stainless steel back plate.

BP-4

Aluminum back plate.



HB-3

Crotch strap set.



HB-4

Back plate pad & pouch.



HD-30H

BCD Handle



HB4-SCREW SET

Plate pad hardware.



JT-WP7/SV x2

Tech BCD weight pockets.



BP3-H

Twin tank band set.

DIMENSION

184mm (7.25")



JT-50D

- Stainless steel plate + Deluxe harness and twin tank band set



JT-51D

- Aluminum steel plate + Deluxe harness and twin tank band set



Technical BCD Components

JT-50

Twin tank Single bladder air cell



HB-2

Deluxe harness & buckle set.



BP-3

Stainless steel back plate.

BP-4

Aluminum back plate.



HB-3

Crotch strap set.



HB-4

Back plate pad & pouch.



HD-30H

BCD Handle



HB4-SCREW SET

Plate pad hardware.



JT-WP7/SV x2

Tech BCD weight pockets.



BP3-H

Twin tank band set.

DIMENSION

184mm (7.25")



JT-30 SINGLE BLADDER SINGLE-TANK AIR CELL (30LBF)**JT-40 SINGLE BLADDER SINGLE-TANK AIR CELL (40LBF)**

It is designed for single tank use. The air cell is extremely streamlined and its frontal width (as the diver assumes swimming position) is barely wider than an average person's shoulders. Low pressure BC hose included.

- Style: Circular doughnut
- Buoyancy capacity: 30lbf (13.6kgf) / 40lbf (18.1kgf)
- Bladder material: 420D TPU coated nylon
- Shell material: 1680D PU coated ballistic nylon
- Inflator length: 16" (40.6 cm) (tech elbow)
- No. of automatic pressure relieve valve / pull dump: 1 (at left waist side)
- Mounting grommets distance (C-C): 11"(27.9 cm)
- Low pressure BC hose included
- For single back mounted tank only (100cuft / 15L internal volume)

CE APPROVED

Colors: JT-30: BK, B, R

JT-40: BK



BK

JT-50**SINGLE BLADDER SINGLE-TANK AIR CELL (50LBF)**

The air cell's protective shell has a special 3-dimensional cutting, which promotes streamlining without sacrificing lift. It is constructed from tear resistant material and a durable anti-corrosion zip encloses the replaceable inner air cell. There are 2 drainage holes in the bottom of the shell for water trapped to escape when exiting the dive. The circular, doughnut design eliminates gas trapping thus providing technical divers with precise buoyancy control any time during a dive mission.

- Style: Circular doughnut
- Buoyancy capacity: 50lbf (22.7kgf)
- Bladder material: 420D TPU coated nylon
- Shell material: 1680D PU coated ballistic nylon
- Inflator type: 16" (40.6cm) tech elbow
- No. of automatic pressure relieve valve / pull dump: 1 (at left waist side)
- Mounting grommets distance (C-C): 11"(27.9cm)
- Low pressure BC hose included
- For twin back mounted tanks only (twin 100cuft / 15L internal volume)
- Low pressure BC hose included.

CE APPROVED

**Backpacks**

Dolphin Tech also offers individual plate and harness backpack combos. Depending on your need, there are 4 models to choose from.

Basic Harness Backpack**JTA-1****Components include:**

- Basic harness (HB-1)
- Aluminum plate (BP-4)
- Crotch strap (HB-3)

JTS-1**Components include:**

- Basic harness (HB-1)
- Stainless plate (BP-3)
- Crotch strap (HB-3)

**Deluxe Harness Backpack****JTA-2****Components include:**

- Deluxe harness (HB-2)
- Aluminum plate (BP-4)
- Crotch strap (HB-3)

JTS-2**Components include:**

- Deluxe harness (HB-2)
- Stainless plate (BP-3)
- Crotch strap (HB-3)



HB-1

HB1-L

BASIC HARNESS

- Material: 5cm(2") wide, 2.5mm thick nylon webbing
- Overall length: 320cm(126") with center grommet.
- HB1-L: 355.6cm(140") in overall length



HBH-1

HARNESS HOSE HOLDER

The holder conveniently keeps the BCD inflator hose close to the diver's torso when used with the Basic Harness.



HBW-2

WAIST PAD

Comfortable waist pads with webbing keepers and belt loops to securely fasten them to the Deluxe Harness.

- Foam waist padding.
- Available in 2 sizes: S/M, L/XL

LENGTH	
S/M	24cm (9.5')
L/XL	28cm (11')



HB-2

HB2-L

DELUXE HARNESS

- 5cm(2") wide, 2.5mm thick nylon webbing
- Anatomic shoulder pads and waist cushions
- Overall length: 320cm(126") (maximum)
- HB2-L: 355.6 cm(140") in overall length



BP-3

BACK PLATE

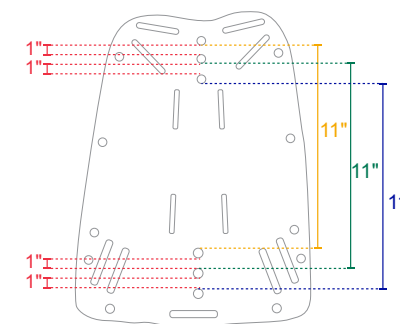
- Material: 304 stainless steel
- Weight: 2.25kg(4.96lb)
- Mounting hole distance: 11"(27.9cm)
- Strong, rust-resistant
- Forms a part of the weighting system
- Pre-bent: anatomical lower corners

BP-4

BACK PLATE

- Material: 6061 aluminum
- Weight: 0.8kg(1.76lb)
- Mounting hole distance: 11"(27.9cm)
- Light-weight, excellent for traveling

The back plate is the heart of a technical buoyancy compensator. It provides the vital connection between a diver and his scuba. Individually press-formed and all edges de-burred, DOLPHIN TECH back plates have 5cm(2") slots for the harness and crotch strap as well as 10 perimeter holes for attaching additional equipment such as stage bottles and canister torch. There are 3 sets of tank mounting holes along the plate's center line, giving the diving easier option to fine tune tank to torso position.



Each set is 2.5cm(1") apart and the distance between the holes of the same set is at industry standard 27.9cm(11") apart.

HB-3

CROTCH STRAP

The soft crotch strap further secures and stabilizes your scuba rig to your torso without causing any discomfort.

- Soft 5cm(2") wide, 1.2mm thick nylon webbing
- Pre-fixed webbing keeper and flat stainless D-ring



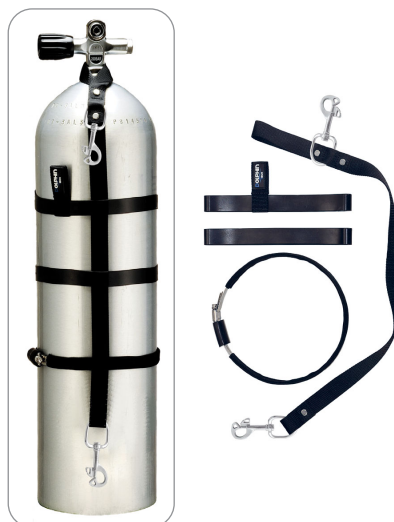
TAD-1**LOW PROFILE SINGLE TANK ADAPTER**

- Material: 304 stainless steel
- Weight (incl. mounting hardware): 0.4kg (0.88lb)
- Mounting hole distance: 11"(27.9cm)

Made from strong and corrosion resistant stainless steel, DOLPHIN TECH single tank adaptor is essential when attaching a scuba cylinder to your tech BCD. It is low profile but creates enough space for a fully inflated air cell to go between the cylinder and the plate. The square mounting holes assist BCD assembling. Attachment hardware comes with 2 washers, winged nuts and split washers, and screws.

**SBR-2** (For tank 7"-7.25")**SBR2-1** (For tank 5.25")**STAGE BOTTLE RIGGINGS**

- Comes with stainless steel clip.

**Tech BCD Weight Pocket**

These DOLPHIN TECH weight pouches provide a secure place on the tech BCD for the weight. Once mounted, they will not interfere with any movement while diving and the simple, fail-safe quick release mechanism works every time.

JT-WP8

- Non-diver releasable trim weight pouches for improved weight distribution and balance.
- Heavy duty 1680D nylon material will prolong usage.
- Open corners for drainage.
- Store extra weight on your belt while keeping it out of the way.

Weight capacity	2kg(4.4lb)
-----------------	------------

**JT-WP5**

Outer pouch material	Heavy duty 1680D nylon
Inner pouch material	420D nylon
Weight capacity	4kg(8.8lb) per pocket

**JT-WP4/SV**

Outer pouch material	Heavy duty 1680D nylon
Inner pouch material	420D nylon
Weight capacity	4kg(8.8lb) per pocket

JT-WP7/SV

Outer pouch material	Heavy duty 1680D nylon
Inner pouch material	420D nylon
Weight capacity	7kg(15.4lb) per pocket

**TSP-2****THIGH STORAGE POUCH**

- Material: wear-resistant 1680D PU-coated nylon, elastic thigh straps with quick release buckles, No.10 rust-proof YKK zip.

DIMENSION	25 cm x 15 cm x 6 cm (9.8" x 5.9" x 2.4")
-----------	---

**BP3H****TWIN TANK BAND SET**

- Material: 304 stainless steel
- Band height: 5cm(2")
- Band thickness: 1.5mm
- Weight (incl. mounting hardware): 1.57kg(3.46lb)
- Compatible with: Twin Ø184mm (7.25") cylinders

The recommended manifold clearance (valves' center to center distance) is 215mm ± 3mm. Each twin band set consists of 2 bands and stainless steel connecting hardware - 2 bolts (with welded-on end nut), 2 aircraft nuts, 2 winged nuts, 2 split washers and 8 washers and 2 screws(5.9").



IF-SMB/N

K INFLATOR

- Length 13"(33cm), 16"(48.2cm), 19" (48.3cm) or 22"(55.9cm)
- Connector style: Tech K style



BP2/I

TANK BAND

The strong, lightweight cam buckle can withstand rigorous use. Supple 2"(5 cm) webbing makes threading an easy task. Fits tanks with diameter from 175mm(6.9") to 203mm(8")



BP2/S

STEEL CAM BUCKLE CYLINDER BAND

The cam buckle is made from 316 stainless steel. It is high in tensile strength and is resistant to corrosion. This cylinder band is a great upgrade from our standard BP2. Fits cylinder with outside diameter from 183mm (7.25") to 203mm (8").



HB4-SCREW

SCREW SET

- Material: 304 stainless steel
- Each set includes: Screw, washer and book style nut. These hardware are used to attach the plate pouch to the back plate. Each pack includes 8 sets.



HD-30H

BCD HANDLE

This convenient feature makes attaching your tech BCD to the scuba cylinder an easy task and gives a carrying point for general handling of the BCD.



HB-4

PLATE POUCH

The pouch utilizes the back plate's recess to provide a convenient and streamlined storage space for your SMB which will be in a handy position when deployment is needed.



DR-1

BENT D-RING

- Material: 304 stainless steel
- Thickness: Ø5mm (0.2")
- Bent angle: 25°
- TIG welded D-rings for superior strength.



DR-2

FLAT D-RING

- Material: 304 stainless steel
- Thickness: Ø5mm (0.2")
- TIG welded D-rings for superior strength.



DR-4

DR-5

COMMERCIAL DIVING HARNESS

- Material: 304 stainless steel
- TIG welded D-rings for superior strength.



DIMENSION

DR-4	Ø6mm(Ø0.23")
DR-5	Ø8mm(Ø0.31")

DR-6

STAINLESS STEEL WEBBING KEEPER WITH SLIDING-BAR

- 316 grade stainless steel
- Different from traditional webbing keepers, the unique sliding bar makes it much easier to do the adjustment of all kinds of webbings.

DIMENSION

6.25cm x 3.85cm x Ø4.75mm(2.45" x 1.5" x Ø0.19")
Sliding Bar 7cm x Ø9.5mm(2.75" x Ø0.37")



DR-8

COMBINATION OF WEBBING KEEPER AND D-RING

- Multipurpose 304 S.S

DIMENSION

10.5cm x 3.8cm (4.13" x 1.5")



WK-4

WEBBING KEEPER

WK-4 is designed to stop the webbing from moving. Each has 2 x 5 cm (2") wide slots. It has the strength to hold the harness and a heavy equipment load.

DIMENSION

2.1cm x 6cm (0.83" x 2.3")



WK-5

WEBBING KEEPER

304 grade stainless webbing keeper.

DIMENSION

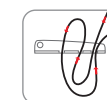
4.57 cm x 6.6 cm (1.8" x 2.6")



BB-3

CAM BELT BUCKLE

- 304 S.S cam lock belt buckle



Tank Valves

1 VLV-LT

LEFT K VALVE



2 VLV-RT

RIGHT K VALVE



- Material: Chrome plated brass
- Valve knob material: Thermal plastic
- Available in 200 or 300 bar version
- Tank neck valve thread: 3/4" - 14NSP or M25 x 2
- DIN female thread: G5/8 or M25
- Burst disk rupture pressure @ 310 bar (4500psi)
- The 200 bar version comes with YK-04 DIN to Yoke tank valve converter
- The burst discs are protected in a recess at the back of the valves.

3 VLV-PLT

LEFT K VALVE PLUG

- Attaches to: Left K valve (right-hand thread)



3 VLV-PRT

RIGHT K VALVE PLUG

- Attaches to: Left K valve (right-hand thread)



4 VLV-HLT

LEFT H VALVE

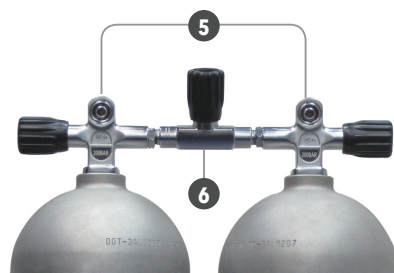
VLV-HRT

RIGHT H VALVE

- Material: Chrome plated brass
- Valve knob material: high impact plastic
- Available in 200 bar outlet version
- DIN female thread: G5/8

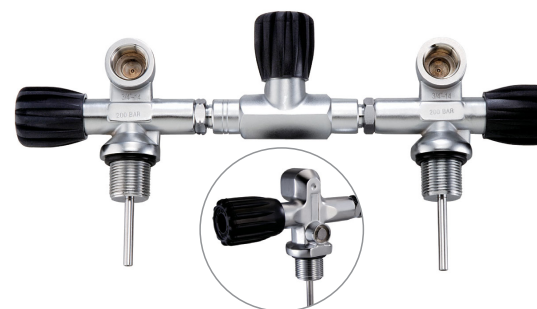
Attaches to
Left K valve
(right-hand thread)Attaches to
Right K valve
(left-hand thread)

The H valve allows the diver to use 2 independent sets of regulators on a single tank, providing redundancy requirement technical divers need. Comes with YK-04 DIN to Yoke tank valve converter



5 VLV-TWN/200

200 BAR MANIFOLD



5 VLV-TWN/300

300 BAR MANIFOLD

6 VLV-MNF

ISOLATION CROSS BAR



This item consists of a set of K valves (left and right) and the isolation cross bar needed for a twin tank setup. Available in 200 bar DIN version with YK-04 DIN to Yoke valve converter or 300 bar DIN only version.

Cross Bar Length
180mm(7.09")
Centre to Centre Spacing
214mm ± 3mm
Compatible with
Twin Ø184mm(7.25") or Ø203mm(8")

Shock absorbing, low friction valve knob and double o-rings for redundancy and better shock absorption.

Cross Bar Length
180mm(7.09")
Valve Knob Material
Thermal plastic
Material
Chrome plated brass

TK-1

TANK KNOB

- Material: Rubber
- Available in black or green to signify Nitrox / Oxygen tanks.



YK-03

DIN TO YOE 1ST STAGE CONVERTER

- Material: Chrome plated brass
- Compatible with: G5/8 200 bar or G5/8
- Maximum working pressure: 232 bar (3365psi)



YK-04

DIN TO YOE 1ST STAGE CONVERTER

- DIN to Yoke tank valve converter – for tanks with 200 bar DIN outlet (G 5/8) only



VP-4

DIN VALVE PLASTIC CAP



DC-2P

1ST STAGE PLASTIC DIN DUST COVER

HHBP-I**COMMERCIAL DIVING BELL HARNESS****Specification**

- Plate thickness: 8.2mm / 0.32"
- Plate reinforcement: Nylon mesh (2 layers)
- Plate buoyancy: Negative
- Dry weight (rubber plate): 750g / 1.65lb
- Dry weight (complete): 2.4kg / 5.3lb (Size: L)
- Webbing: 3.5mm thick, 2 inch wide nylon
- Rivet: Stainless steel (36)
- Hardware: Stainless steel

SIZES	XS, S, M, L, XL
-------	-----------------

**HHBP-III****COMMERCIAL DIVING BELL HARNESS**

- Easy to use.
- Commercial diving bell harness with rubber back plate and crotch straps.
- Marseille style buckles on crotch straps provide convenience and easy to use.

Specification

- Plate thickness: 8.2mm / 0.32"
- Plate reinforcement: Nylon mesh (2 layers)
- Plate buoyancy: Negative
- Dry weight (rubber plate): 750g / 1.65 lb
- Webbing: 3.5mm thick, 2 inch wide nylon
- Rivet: Stainless steel (42)
- Grommets: Brass(20)

SIZES	XS, S, M, L, XL
-------	-----------------

**HHBP-VII****COMMERCIAL DIVING BELL HARNESS**

- Back plate: IST BP-3 stainless steel back plate
- Webbing: 3.5mm thick, 2 inch wide nylon
- Rivet: Stainless steel (50)
- Hardware: Stainless steel

SIZES	XS, S, M, L, XL
-------	-----------------

**HHBP-V****COMMERCIAL DIVING BELL HARNESS**

- Webbing: 3.5mm thick, 2 inch wide nylon
- Rivet: Stainless steel (32)
- Hardware: Stainless steel

SIZES	XS, S, M, L, XL
-------	-----------------

**HHWB-W05/S****5 LB LEAD WEIGHT SET****HHWB-W08/S****8 LB LEAD WEIGHT SET**

- Design for IST HHWB commercial diving weight belt.
- Comes with stainless steel screw, nut and plate sets.

**HHWB-W05****5 LB LEAD WEIGHT****HHWB-W08****8 LB LEAD WEIGHT**

- 5 lbs or 8 lbs lead weight for HHWB commercial diving weight belt.

**HHWB-BB**

- Stainless steel buckle set for HHWB weight belt.
- Comes with 4 x 5/8" screws (HHWB-SCREW1) and 2 x stainless steel plates.

**BP-5****RUBBER PLATE**

Each waist strap comes with 2 x 6mm hook up D-rings, secured to the lower edge and a large 8mm emergency hook up D-ring is riveted to the top of the center strap, located in between the shoulder straps.

**HHWB-SS**

- Nylon shoulder straps for HHWB commercial diving weight belt.
- Comes with 4 stainless steel hangers.

**HHWB-25****HHWB-40**

- Commercial diving weight belt.
- Comes with 5 x 5 lbs or 5 x 8 lbs lead weight.
- High grade rubber weight belt with 2 added layers of tear-resistant nylon mesh as reinforcement.

**HHWB-25/S****HHWB-40/S**

- Commercial diving weight belt with adjustable nylon shoulder straps.
- Comes with 5 x 5 lbs or 5 x 8 lbs lead weight.
- High grade rubber weight belt with 2 added layers of tear-resistant nylon mesh as reinforcement.

**MV-1****VELCRO TAPE**

Velcro tape helps you to fix the extra webbings.



DR-5



DR-4



WK-5

T-60

APOLLO LED TORCH

- Four selectable operation modes:
High Output Mode→Mid Output Mode→Low Output Mode→SOS Mode→OFF
- Magnetic power switch
- 6061-T6 Light-weight aluminum material
- Light diffuser attachable
- Patented build-in sliding cover provides protection for users to the strong light when using the diffuser
- Come with one lanyard

Bulb type	1 x CREE XM-L2 U3
LED life	50000 hours
Brightness	1200 Lumens
Burn time	2-10 hours
Max. Depth	100m / 328ft
Weight(dry)	116g / 0.26lb (without battery)
Buoyancy	Negative
Two Kinds of Battery type	1 x 18650 rechargeable Li-ion (recommend) or 2 x CR123A primary lithium batteries
Dimension	13.2cm x Ø2.6cm (5.20" x Ø1.02")



T101/LI

RECHARGEABLE HIGH POWER LED TORCH

- Compact and sturdy, provides effective illumination for night diving or average exploration.
- Durable, attractive anodized aluminum alloy torch body.
- Comes with user-changeable photographic lens.
- Lantern handle with adequate clearance, even when using thick gloves.
- Switch lock prevents accidental activation.
- Twin O-ring waterproof seal.

CE APPROVED

Bulb type	3 x High Power LED
LED life	10000+ hours
Colour temp.	5500K
Brightness	660 Lumens
Burn time	3+ hours
Changing time	10-12 hours (approx.)
Max. Depth	100m / 328ft
Weight(dry)	820g / 1.8lb
Buoyancy	Negative
Battery type	Rechargeable Lithium-ion, 4.2V x 10400 mAh
Battery life	Up to 300 recharge - discharge cycles
Beam angle	35°
Dimension	15cm x 11cm x 7cm / 5.9" x 4.3" x 2.8" (incl. handle)



T16

SINGLE HIGH POWER LED BACK-UP TORCH

- Handy-sized 3 watt back-up torch with effective illumination.
- Specially designed switch lock system to prevent accidental activation.
- Double o-ring sealed provides extra security against leakage.
- Quick and easy battery replacement.
- Strong plastic casing.

Burn time	5+ hours
LED life	10000+ hours
Colour temp.	5500K
Brightness	900 Lumens
Max. Depth	60m / 197ft
Weight(dry)	165g / 0.36lb (without battery)
Buoyancy	Positive
Battery type	3 C-sized batteries
Dimension	16 cm x 6 cm x 5 cm (6.2" x 2.4" x 2")



BG-05**LIGHTWEIGHT DIVER'S ROLLING BAG**

- Made from tough and durable 600D polyester fabric
- Telescopic handle can be stowed away when not using
- Adjustable padded shoulder straps for another option of carrying
- Capacity: 90L
- Weight: 5KG

DIMENSION

70cm x 35cm x 40cm (27.6" x 13.8" x 15.8")

**BG-03/S****DIVER'S ROLLING BAG**

- Capacity: 131L
- Telescopic handle can be stowed away when not rolling.
- Super light but durable polyester fabric makes this bag extremely suited for traveling and it's 5 kg (11 LB) only!

DIMENSION 80cm x 47cm x 40cm (31.5" x 18.5" x 16")**MGB-11****MGB-12****MESH BAG****DIMENSION****MGB-11** 81cm x 040cm (32" x 016")**MGB-12** 68cm x 032cm (27" x 012")**MGB-36****MESH BAG**

- Made from lightweight and tough 600D polyester fabric with durable nylon mesh
- Roomy, lightweight, and easy to maintain

DIMENSION 75cm x 30cm x 24cm (29.5" x 11.8" x 9.4")**MGB-10****FOLDED MESH BAG**

- Large retractable mesh backpack.
- When not in use, MGB-10 can be folded and tucked away neatly in your equipment bag.
- Ideal as a spare carrying bag.

DIMENSION**Fully Extended** 73cm x 35cm x 40cm (29" x 14" x 16")**Folded** 7cm x 20cm x 25cm (2.7" x 7.9" x 9.8")

BG-02**JET ROLLING BAG**

This roller bag – cum – back pack is small enough to be carried on board of airplanes yet it is roomy enough for your personal lap-top and other knick-knacks!

DIMENSION	47cm x 34cm x 17cm (18.4" x 13" x 6.7")
------------------	---

**BGM-02****ONE-HAND-RELEASE GAME BAG**

- Spring-loaded handle catch bag provides convenience, quick and easy access to the interior.
- The bag can be opened with only one hand, leaving the other hand free to hold on to the catch.
- Heavy duty 420D nylon and lasting mesh bottom allows for fast drainage.
- Stainless steel made handle and spring.

DIMENSION	70cm x 42cm (27" x 16")
------------------	-------------------------

**DB-14**

Mesh bag with plastic D-ring and drawstring closure.

DIMENSION	68.5cm x 41cm (26" x 16")
------------------	---------------------------

**BGM-05**

Heavy duty 420D nylon and lasting mesh bottom allows for fast drainage.
Stainless steel made handle with clip provides convenience, quick and easy access to the interior.

DIMENSION	90cm x 60cm (35.4" x 23.6")
------------------	-----------------------------

**DB-10L****10L DRY BAG**

- Lightweight and durable dry bag made from environmental friendly material 500D TPU coated fabric.
- Comes with 1.5" webbing strap.

DIMENSION	Ø20cm x 48cm (Ø7.9" x 18.9")
------------------	------------------------------



GN

DB-20L**20L DRY BAG**

- Lightweight and durable dry bag made from environmental friendly material 500D TPU coated fabric.
- Comes with 1.5" webbing strap.

DIMENSION	Ø23.5cm x 61cm (Ø9.3" x 24")
------------------	------------------------------



B

DB-40L/N**40L DRY BAG**

- Comes with two padded shoulder straps.
- Lightweight, durable dry bags.
- Made from environmental friendly material (500D TPU coated PVC).

DIMENSION	Ø30cm x 72cm (Ø11.8" x 28")
------------------	-----------------------------



Deluxe shoulder straps

BK

K-25**KNIFE SCISSORS**

- Overall length: 28cm (11")
- 420 grade stainless steel with pointed-tip blade
- Rubber knife straps are included
- Easy for one-handed operation

**K-21****STAINLESS STEEL KNIFE**

- 11cm (4.3") long 420 grade stainless steel pointed-tip blade
- Serrated edge with line cutting groove
- Rubber knife straps included
- Designed for spearfishing purpose

**K-09**

- 13.5cm (5 3/8") long 420 grade stainless steel blade
- Steel butt for underwater signaling
- Proper serrated edge and line cutting groove
- Rubber knife straps included

**K-10**

- 10.5cm (4 3/8") long 420 grade stainless steel pointed-tip blade
- Steel butt for underwater signaling
- Proper serrated edge and line cutting groove
- Rubber knife straps included

**K-11**

- 10.5cm (4 3/8") long 420 grade stainless steel blunt tip blade
- Steel butt for underwater signaling
- Proper serrated edge and line cutting groove
- Rubber knife straps included

**K-28****BC KNIFE**

- Back-up BCD knife with 7cm (2.8") 420 grade stainless blade
- Durable nylon sheath, which can be mounted upside down on BCD shoulder strap or stored in BCD pockets.
- Serrated edge with line cutting groove

**K-30****TITANIUM****BC KNIFE**

- Back-up BC knife made from high grade #6-4 titanium
- Durable and easy-carry nylon sheath, which can be mounted upside down on BC shoulder strap or stored in BC pockets
- Serrated edge with line cutting groove
- Overall length: 15cm (5.9")

**K-40****FOLDING KNIFE**

- Foldable 420 stainless steel diving BC knife
- Comes with lanyard

LENGTH	
Extend	21cm (8.25")
Fold	12cm (4.7")

**KB-01**

- Rubber knife strap.
- 45cm (17.7") long.



RL-3/N 30M /100FT**RL-4/N 50M /165FT****RL-5/N 15M /45FT**

- The last 5m(15ft) line has been changed into orange color for the purpose of being as a decompression stop reminder for divers
- Comes with marine grade brass clip
- Strong string with special braiding capable of holding onto object with maximum 80kg / 176lb(dry weight)
- Light weight construction:
 - RL-3/N 156g (5.5oz)
 - RL-4/N 194g (6.83oz)
 - RL-5/N 115g (4.06oz)

**RL-6/N 15M /45FT ALUMINUM REEL****RL-7/N 30M /100FT ALUMINUM REEL**

- The last 5m(15ft) line has been changed into orange color for the purpose of being as a decompression stop reminder for divers
- Strong string with special braiding capable of holding onto object with maximum 80kg / 176 lb (dry weight)
- Flared design makes for easier winding when wearing gloves underwater.
- Larger center hole can accommodate thicker gloves.
- Constructed of tough anodized aluminum alloy for durability.
- Come with a 10cm (4") 304 stainless steel double clip.
- Light weight construction:
 - RL-6/N 236g(8.32oz.)
 - RL-7/N 291g(10.26oz.)

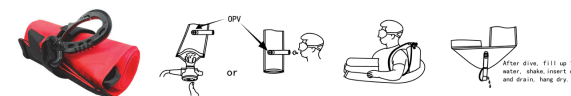
**RL-1 80M /265FT****RL-2 45M /150FT**

- Strong string with special braiding capable of holding onto object with maximum 80kg / 176 lb (dry weight)
- Reel and carrying handle made from durable ABS material
- Ratcheted system allows better control of the line when paying out and reeling in

**SB-9****NEW****"DIVER BELOW" BUOY**

- Made from 75D TPU coated Nylon.

DIMENSION	181cm x 13.5cm (71.2" x 5.3")
------------------	-------------------------------

**SB-5/Q****SURFACE MARKER BUOY**

- Quick-disconnect inflation valve.

DIMENSION	154cm x 18cm (60" x 7")
------------------	-------------------------



Automatic valve releases excess pressure to prevent SB-5/Q from bursting

**SB-5****SURFACE MARKER BUOY**

Reusable safety sausage with a unique two-layer design: the outer layer is made of 210D nylon with water-resistant PU coating, which protects the inner bladder.

DIMENSION	154cm x 18cm (60" x 7")
------------------	-------------------------

The sturdy storage pouch has a mesh bottom for quick drainage. It can be carried on any 2" webbing or clipped onto a d-ring.

**SB-8/R****SURFACE MARKER BUOY WITH REFLECTIVE TAPE**

- Made from 210D TPU coated Nylon.
- Plastic oral inflator.
- SOLAS reflective tape.

DIMENSION	114cm x 12cm (45" x 4.7")
------------------	---------------------------

**SB-8/Q-R****SURFACE MARKER BUOY WITH REFLECTIVE TAPE**

- Made from 210D TPU coated Nylon.
- Quick-disconnect metal inflator valve can be inflated with BC hose.
- SOLAS reflective tape.

**LB-50/Q****50 LBF LIFT BAG****LB-100/Q****100 LBF LIFT BAG**

- 50lbf and 100lbf lift bag with quick-disconnect inflation valve and over-pressure valve.
- 304 stainless steel D-ring.
- With a 3-dimensional cutting, Dolphin Tech's lift bags are much more stable when deployed. It has a self-sealing gas entrance which prevents accidental loss of buoyancy and an automatic dump valve located on top provides ascent speed control and prevents over-pressure damage. 2 bungee loops at the top can be used to roll up the lift bag for storage purpose.



WR-1

UNDERWATER WRITING SLATE

- Comes with a clip for convenient carrying
- Equipped with quick release buckle

DIMENSION	12.5cm x 15cm(5" x 6")
-----------	------------------------



WR-6

UNDERWATER SLATE WITH RETRACTOR

- Underwater slate with ruler (length 15 cm / 6").
- Retractor with lockable mechanism to stop the slate from being constantly pulled back while writing.
- Stainless steel wire length @ 47.5 cm (18.7").

DIMENSION	17.5cm x 12.7cm(7" x 5")
-----------	--------------------------



WR-3

MULTI-SIDED UNDERWATER WRITING SLATE

- Unique slate with elastic hinge for more writing space without losing compactness
- Can be attached to the forearm for streamlining and out of the way of any wrist instrument

DIMENSION	10.5cm x 12cm(4.1" x 4.7")
-----------	----------------------------



WR-5

UNDERWATER NOTEBOOK

- Contains 25 pages of reusable waterproof paper.
- The cover is made from durable 2250D PU coated ballistic nylon.
- Clear-window pockets on the inside and outside of the back cover for important items such as tables, checklist, compass etc

DIMENSION	
Open	20cm x 25cm(8" x 10")
Folded	20cm x 12.5cm(8" x 5")

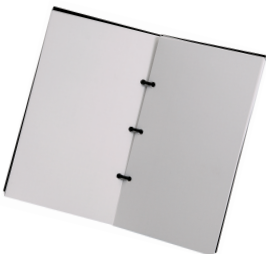


WR5-REFILL

UNDERWATER NOTEBOOK REFILLED

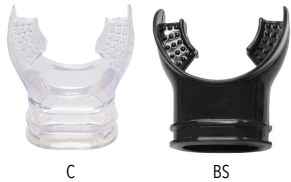
- 25 Pages of waterproof reusable with hard plastic covers.

DIMENSION	
Open	17.5cm x 20.4cm(7" x 8")
Folded	17.5cm x 10.2cm(7" x 4")



MP-1**REGULATOR MOUTHPIECE**

- Silicone



C

BS

MP-2**COMFORT MOUTHPIECE**

- Silicone



C

BS

MP-6**MOULDBLE MOUTHPIECE**

Mouldable to suit each individual's dental profile. The most outstanding benefit of having a properly fitted mouthpiece is less physical exertion is needed when using a second stage equipped with this mouthpiece, leaving the diver with significantly reduced fatigue. Simply immerse the mouthpiece (including all of its attachments to keep its profile in critical sections) into 95°C / 203°F water for 30 seconds, place it inside mouth, biting down and sucking on it for 30 seconds. Rinse with cold water and then recheck fit. Repeat the process as necessary.

N/A IN NORTH AMERICA.



C

BS

MP-7**COMFORT MOUTHPIECE**

- Larger, longer tabs offer a greater contact surface to spread bite force, lessening jaw fatigue.
- Soft, flexible, hypoallergenic silicone construction.
- Available in Transparent or Black

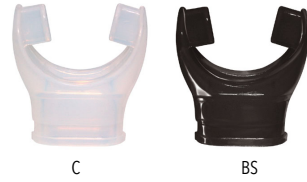


C

BS

MP1-M**MINI MOUTHPIECE**

- Silicone



C

BS

MP-5**ERGONOMIC MOUTHPIECE**

- Silicone



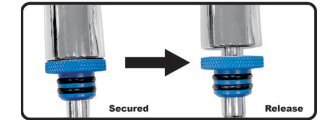
C

BS

TA-5/E

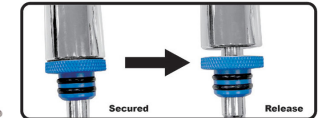
- Compact stainless underwater shaker with magnetic device to stop unwanted rattle.

OVERALL LENGTH	15.5cm (6")
----------------	-------------

**TA-6/E**

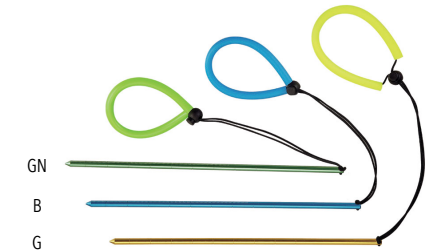
- Same as TA5 with measure rod added (8 x 2.54cm segments)

OVERALL LENGTH	28cm (11")
----------------	------------

**TA-7**

- Aluminum pointer with ruler and lanyard.

OVERALL LENGTH	30cm (11.8")
----------------	--------------



GN

B

G

TA-NY**TANK BANGER**

For underwater use. The super-stretchy silicone band can wrap around any dive cylinder from Ø15cm(Ø6") and up. The hard plastic ball can be pulled and released, producing noise to attract attention.

**WH-04****SPLIT FIN SHAPED WHISTLE**

B

BK

O

Y

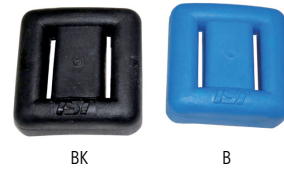
CPR**EMERGENCY RESUSCITATION KIT**

- Allows mouth to mouth resuscitation without physical contact.
- Made from hypoallergenic silicone.
- Separate oxygen tube inlet.
- Comes with protective case.



W-01 1KG(2.2LB) COATED LEAD WEIGHT**W-02 2KG(4.4LB) COATED LEAD WEIGHT**

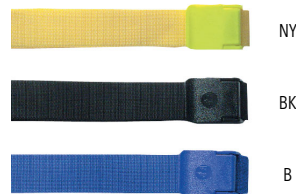
- Safe to handle and better for the environment.
- Plastic coating will prolong usage.
- 5cm (2") webbing slots.

**RB1-BK****QUICK RELEASE BELT**

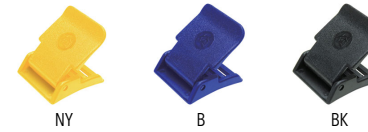
- Quick release weight belt with no-snag design.
- One-hand adjustable and quick releasable enhances comfort and safety.
- 2 weight keepers included.

**WB-10****WEIGHT BELT**

- Weight belt with plastic buckle and 5cm(2") webbing.
- 150cm (5') long.

**WB-12****WEIGHT BELT**

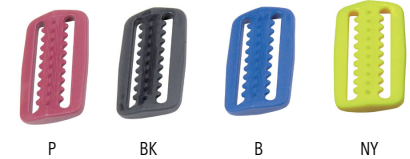
- Weight belt with BB-3 stainless buckle and 5cm(2") webbing.
- 150cm(5') long.

**BB****BELT BUCKLE-PLASTICS****BB-3****CAM BELT BUCKLE**

- 304 stainless steel cam lock belt buckle.
- Secure 3-slot design

**WK****WEBBING KEEPER**

- Webbing keeper with serrated teeth. It is durable enough to be used as weight keeper. The slots are 5cm(2") wide.

**WK-2****D-RING WEBBING KEEPER**

- 304 stainless webbing keeper with serrated teeth and a D-ring welded on for convenience. The slots are 5cm(2") wide.

**WK-3****STAINLESS WEBBING KEEPER**

- 304 stainless webbing keeper with serrated teeth and can also function as a weight keeper. The slots are 5cm(2") wide.

**WK-4****WEBBING KEEPER**

- WK-4 is designed to stop the webbing from moving. Each has 2 x 5 cm (2") wide slots. It has the strength to hold the harness and a heavy equipment load.

DIMENSION	2.1cm x 6cm(0.83" x 2.3")
------------------	---------------------------

**WK-5****WEBBING KEEPER**

- 304 grade stainless webbing

DIMENSION	4.57 cm x 6.6 cm (1.8" x 2.6")
------------------	--------------------------------



AW-1**LINE ARROW****AW-3**

- Colors: NY, O, W
- Overall Length: 8.4cm(3.3")

**AW-4**

- Colors: NY, O, W
- Overall Length: 5.5cm(2.2") in diameter

**JL-2****DRIFT HOOK**

- Webbing material: 2.5cm(1") wide nylon
- Length: 2.1m (7')
- Hook material: 5mm 304 stainless steel

This is the tool to help a diver stay in a particular location while drift diving. Comes with a storage pouch that can be carried on any 5cm(2") webbing.

**JL-5/L****DOUBLE DUAL DRIFT HOOK**

- Stainless steel hook and snap.
- Overall length: 150cm(5')

**JL-6****COILED DRIFT HOOK**

- Stainless steel wire-reinforced coil drift hook with high grade stainless steel hook and clip
- Max. Load: 80KG (176lb)
- Overall length: 9.5cm (3.7")
- Length in full extension: 1.5M (4'11")

**SP-6A**

Coil Lanyard with clips

**SP-8A**

Stainless steel wire-reinforced coil lanyard with quick release buckle and stainless steel clip

**SP-2A/S**

- Small swivel stainless steel 316 grade clip with 1" webbing
- Can be used with 2" wide weight belt

**KC01-A**

- Tank shaped key ring.
- O-ring hook included:

Ø11mm x 2.4mm x 1
Ø14mm x 2.4mm x 3

**DF1/S****DF2/S****DIVE FLAG**

- Nylon "Diver-Down" flag with metal grommets.
- 304 stainless steel stiffener.

**DIMENSION**

DF1/S	50cm x 60cm (20" x 24")
DF2/S	35cm x 45cm (14" x 18")

SP7A-1

Stainless steel wire-reinforced coil lanyard with quick release buckle and stainless steel clip

**SP-26A****RETRACTOR**

- Overall Length: 18.2cm(7.15")
- Maximum extension: 91.4cm(36")

**KC13****SAFARI KEY CHAIN**

DIMENSION 10.5cm x 2.7cm x 0.9cm (4.1" x 1" x 0.1")

**DF3/S****DF4/S****ALPHA DIVE FLAG**

Nylon Alpha "A" flag with 304 stainless steel stiffener and metal grommets.

**DIMENSION**

DF3/S	50cm x 60cm (20" x 24")
DF4/S	35cm x 45cm (14" x 18")

SP-34A

- 5cm(2") stainless steel quick link provides convenient semipermanent connection
- 5mm wire thickness
- All sharp edges removed from the manufacturing process

**SP-35A**

- 4cm(1.6") stainless steel quick link.
- 4mm wire thickness.
- All sharp edges removed from the manufacturing process.

**SP-32A**

- Overall length: 10cm(3.94")

**SP-33A**

- Overall length: 7cm(2.8")

**SP-42A****STAINLESS STEEL CLIP**

- Overall length: 11cm (4.3")

**SP-31A**

- Stainless steel double-end clips
- Overall length: 10cm(3.94")
- Each gate is rounded for safe underwater operation

**SP-40A****DOUBLE-END CLIP**

- Stainless steel double-end clip
- Overall length: 10cm (3.94")

**SP-41A****STAINLESS STEEL DOUBLE-END CLIP**

- Corrosion-resistant stainless steel construction.
- Total length: 10.8cm (4.25") are 5cm(2") wide.

**SP-37A**

- 316 grade stainless steel clip.
- Overall length : 8.5cm(3.3")

**SP-38A**

- 316 grade stainless steel clip.
- Overall length : 8cm(3.1")

**SP-39A/S**

- 316 grade stainless steel clip
- Overall length : 8.7cm (3.4")

**DR-1****BENT D-RING**

- Material: 304 stainless steel
 - Thickness: Ø5mm (0.2")
 - Bent angle: 25°
- TIG welded D-rings for superior strength.

**DR-2****FLAT D-RING**

- Material: 304 stainless steel
 - Thickness: Ø5mm (0.2")
- TIG welded D-rings for superior strength.

**DR-4****DR-5****COMMERCIAL D-RING**

- Material: 304 stainless steel
- TIG welded D-rings for superior strength.

**DIMENSION**

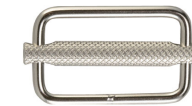
DR-4	Ø6mm(Ø0.23")
DR-5	Ø8mm(Ø0.31")

SD-1

Lanyard with silicone tube sleeve and stopper for convenient usage

DR-6**316 STAINLESS STEEL WEBBING KEEPER WITH SLIDING-BAR****DIMENSION**

6.25cm x 3.85cm x wire 4.75mm(2.45" x 1.5" x 0.19")	
Sliding Bar	7cm x wire 9.5mm(2.75" x 0.37")

**DR-8****COMBINATION OF WEBBING KEEPER AND D-RING**

- 304 Stainless steel material

DIMENSION	10.5cm x 3.8cm(4.13" x 1.5")
------------------	------------------------------



BK



NY





HELP SAVE THE OCEAN



**Buy Our Product
Make A Difference**

Reduce ↓ 
Plastic Package